

Datasheet for ABIN7092944
anti-CNR1 antibody (AA 1-116)[Go to Product page](#)

2 Images

Overview

Quantity:	100 µg
Target:	CNR1
Binding Specificity:	AA 1-116
Reactivity:	Human
Host:	Rabbit
Clonality:	Monoclonal
Conjugate:	This CNR1 antibody is un-conjugated
Application:	ELISA, Flow Cytometry (FACS)

Product Details

Immunogen:	Recombinant human CB1(Met1-Gln116) (ABIN6964092) produced by using human HEK293 cells
Clone:	DM144
Isotype:	IgG
Purification:	Purified from cell culture supernatant by affinity chromatography

Target Details

Target:	CNR1
Alternative Name:	CB1 (CNR1 Products)
Background:	Synonyms: CANN6, CB-R, CB1, CB1A, CB1K5, CB1R, CNR

Target Details

Description: This gene encodes one of two cannabinoid receptors. The cannabinoids, principally delta-9-tetrahydrocannabinol and synthetic analogs, are psychoactive ingredients of marijuana. The cannabinoid receptors are members of the guanine-nucleotide-binding protein (G-protein) coupled receptor family, which inhibit adenylate cyclase activity in a dose-dependent, stereoselective and pertussis toxin-sensitive manner. The two receptors have been found to be involved in the cannabinoid-induced CNS effects (including alterations in mood and cognition) experienced by users of marijuana. Multiple transcript variants encoding two different protein isoforms have been described for this gene.

Molecular Weight: 52.8KDa

Pathways: [Feeding Behaviour](#)

Application Details

Application Notes: ELISA 1/5000-10000, Flow Cyt 1/100

Restrictions: For Research Use only

Handling

Format: Lyophilized

Reconstitution: Reconstitute with deionized water

Buffer: Lyophilized from sterile PBS, pH 7.4. Normally 5 % - 8 % trehalose is added as protectants before lyophilization., 0.1 % Procline 300

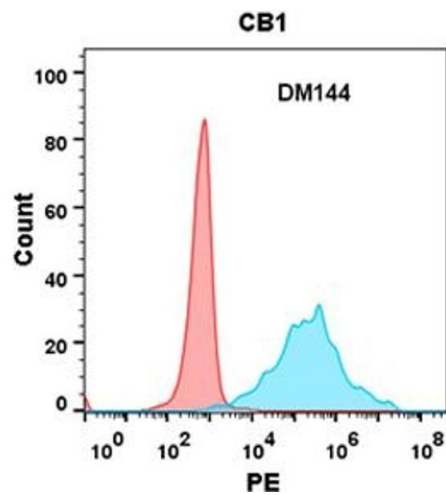
Preservative: ProClin

Precaution of Use: This product contains ProClin: a POISONOUS AND HAZARDOUS SUBSTANCE which should be handled by trained staff only.

Storage: -20 °C, -80 °C

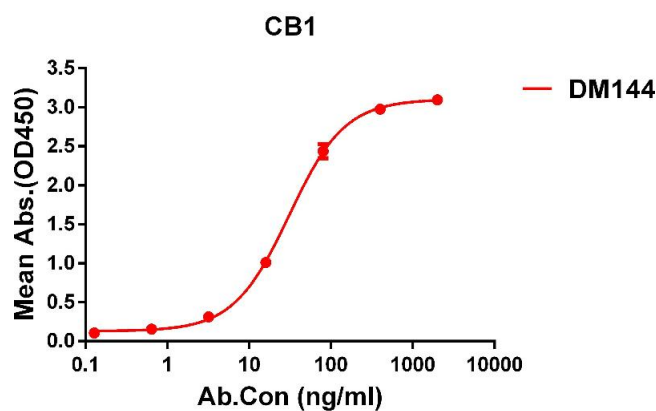
Storage Comment: Store at -20°C to -80°C for 12 months in lyophilized form. After reconstitution, if not intended for use within a month, aliquot and store at -80°C (Avoid repeated freezing and thawing).
Lyophilized proteins are shipped at ambient temperature.

Expiry Date: 12 months



Flow Cytometry

Image 1. Flow cytometry analysis with Anti-CB1 (DM144) on Expi293 cells transfected with human CB1 (Blue histogram) or Expi293 transfected with irrelevant protein (Red histogram).



ELISA

Image 2. ELISA plate pre-coated by 1 µg/mL (100 µL/well) Human CB1 protein, hFc tagged protein ((ABIN6964092, ABIN7042439 and ABIN7042440)) can bind Rabbit anti-CB1 monoclonal antibody(clone: DM144) in a linear range of 5-200 ng/mL.