

Datasheet for ABIN7092949
anti-ROR1 antibody (AA 30-403)

2 Images

[Go to Product page](#)

Overview

Quantity:	100 µg
Target:	ROR1
Binding Specificity:	AA 30-403
Reactivity:	Human
Host:	Rabbit
Clonality:	Monoclonal
Conjugate:	This ROR1 antibody is un-conjugated
Application:	ELISA, Flow Cytometry (FACS)

Product Details

Immunogen:	Recombinant human ROR1(Gln30-Glu403) (ABIN6964103) produced by using human HEK293 cells
Clone:	DM149
Isotype:	IgG
Purification:	Purified from cell culture supernatant by affinity chromatography

Target Details

Target:	ROR1
Alternative Name:	ROR1 (ROR1 Products)
Background:	Synonyms:ROR1,NTRKR1

Target Details

Description: This gene encodes a receptor tyrosine kinase-like orphan receptor that modulates neurite growth in the central nervous system. The encoded protein is a glycosylated type I membrane protein that belongs to the ROR subfamily of cell surface receptors. It is a pseudokinase that lacks catalytic activity and may interact with the non-canonical Wnt signalling pathway. This gene is highly expressed during early embryonic development but expressed at very low levels in adult tissues. Increased expression of this gene is associated with B-cell chronic lymphocytic leukaemia. Alternative splicing results in multiple transcript variants encoding different isoforms. [provided by RefSeq, Jun 2012]

Molecular Weight: 104KDa

Pathways: [RTK Signaling](#), [WNT Signaling](#), [Nuclear Receptor Transcription Pathway](#), [Steroid Hormone Mediated Signaling Pathway](#), [Regulation of Lipid Metabolism by PPARalpha](#)

Application Details

Application Notes: ELISA 1/5000-10000, Flow Cyt 1/100

Restrictions: For Research Use only

Handling

Format: Lyophilized

Reconstitution: Reconstitute with deionized water

Buffer: Lyophilized from sterile PBS, pH 7.4. Normally 5 % - 8 % trehalose is added as protectants before lyophilization., 0.1 % Procline 300

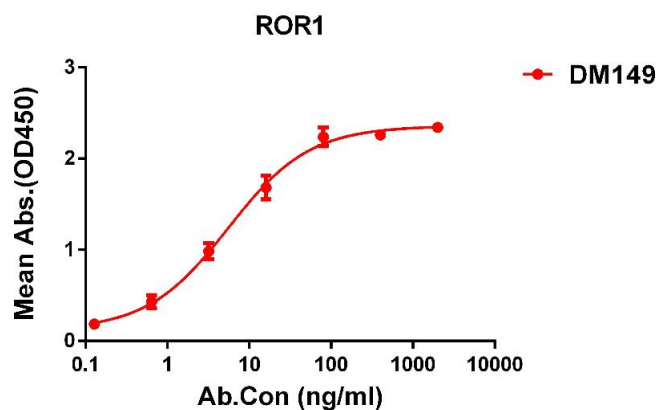
Preservative: ProClin

Precaution of Use: This product contains ProClin: a POISONOUS AND HAZARDOUS SUBSTANCE which should be handled by trained staff only.

Storage: -20 °C, -80 °C

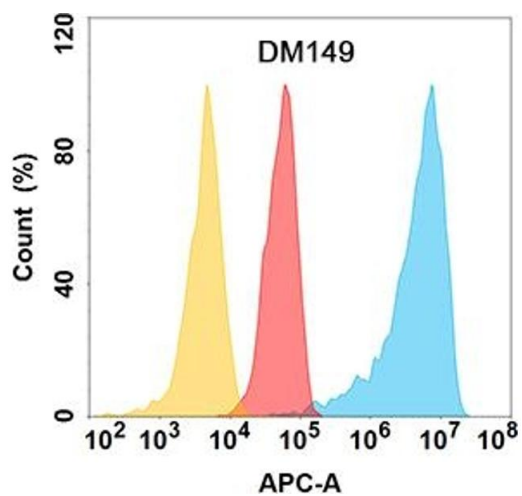
Storage Comment: Store at -20°C to -80°C for 12 months in lyophilized form. After reconstitution, if not intended for use within a month, aliquot and store at -80°C (Avoid repeated freezing and thawing).
Lyophilized proteins are shipped at ambient temperature.

Expiry Date: 12 months



ELISA

Image 1. ELISA plate pre-coated by 1 µg/mL (100 µL/well) Human ROR1 protein, His tagged protein ((ABIN6964103, ABIN7042461 and ABIN7042462)) can bind Rabbit anti-ROR1 monoclonal antibody(clone: DM149) in a linear range of 1-50 ng/mL.



Flow Cytometry

Image 2. ROR1 protein is highly expressed on the surface of Expi293 cell membrane. Flow cytometry analysis with Anti-ROR1 (DM149) on Expi293 cells transfected with human ROR1 (Blue histogram) or Expi293 transfected with irrelevant protein (Red histogram), and Isotype antibody on Expi293 transfected with irrelevant protein (Orange histogram).