



[Go to Product page](#)

Datasheet for ABIN7092950

anti-P-Selectin antibody (AA 42-771)

2 Images

Overview

Quantity:	100 µg
Target:	P-Selectin (SELP)
Binding Specificity:	AA 42-771
Reactivity:	Human
Host:	Rabbit
Clonality:	Monoclonal
Conjugate:	This P-Selectin antibody is un-conjugated
Application:	Flow Cytometry (FACS), ELISA

Product Details

Immunogen:	Recombinant human SELP(Trp42-Aal771) (ABIN6961139) produced by using human HEK293 cells
Clone:	DM150
Isotype:	IgG
Purification:	Purified from cell culture supernatant by affinity chromatography

Target Details

Target:	P-Selectin (SELP)
Alternative Name:	SELP (SELP Products)
Background:	Synonyms:P-Selectin,CD62P,SELP,GMP-140

Target Details

Description: This gene encodes a 140 kDa protein that is stored in the alpha-granules of platelets and Weibel-Palade bodies of endothelial cells. This protein redistributes to the plasma membrane during platelet activation and degranulation and mediates the interaction of activated endothelial cells or platelets with leukocytes. The membrane protein is a calcium-dependent receptor that binds to sialylated forms of Lewis blood group carbohydrate antigens on neutrophils and monocytes. Alternative splice variants may occur but are not well documented.

Molecular Weight: 90.8KDa

Application Details

Application Notes: ELISA 1/5000-10000, Flow Cyt 1/100

Restrictions: For Research Use only

Handling

Format: Lyophilized

Reconstitution: Reconstitute with deionized water

Buffer: Lyophilized from sterile PBS, pH 7.4. Normally 5 % - 8 % trehalose is added as protectants before lyophilization., 0.1 % Procline 300

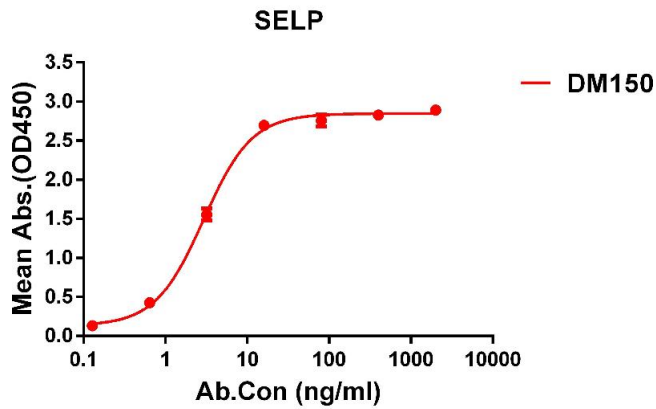
Preservative: ProClin

Precaution of Use: This product contains ProClin: a POISONOUS AND HAZARDOUS SUBSTANCE which should be handled by trained staff only.

Storage: -20 °C, -80 °C

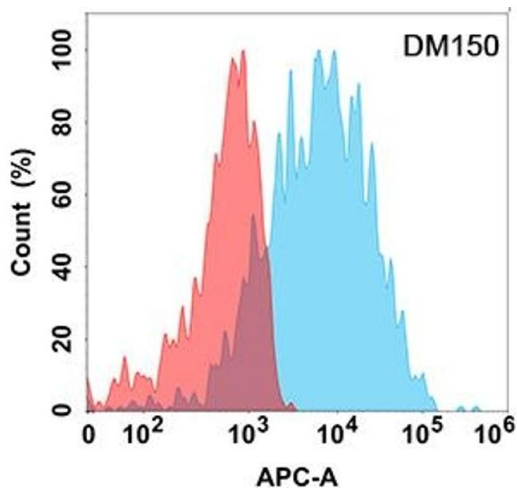
Storage Comment: Store at -20°C to -80°C for 12 months in lyophilized form. After reconstitution, if not intended for use within a month, aliquot and store at -80°C (Avoid repeated freezing and thawing).
Lyophilized proteins are shipped at ambient temperature.

Expiry Date: 12 months



ELISA

Image 1. ELISA plate pre-coated by 1 µg/mL (100 µL/well) Human SELP protein, hFc tagged protein ((ABIN6961139, ABIN7042307 and ABIN7042308)) can bind Rabbit anti-SELP monoclonal antibody(clone: DM150) in a linear range of 1-10 ng/mL.



Flow Cytometry

Image 2. Flow cytometry analysis with Anti-SELP (DM150) on Expi293 cells transfected with human SELP (Blue histogram) or Expi293 transfected with irrelevant protein (Red histogram).