

Datasheet for ABIN7092953  
**anti-B7-H6 antibody (AA 25-365)**[Go to Product page](#)

## 2 Images

## Overview

Quantity:	100 µg
Target:	B7-H6 (NCR3LG1)
Binding Specificity:	AA 25-365
Reactivity:	Human
Host:	Rabbit
Clonality:	Monoclonal
Conjugate:	This B7-H6 antibody is un-conjugated
Application:	ELISA, Flow Cytometry (FACS)

## Product Details

Immunogen:	Recombinant human B7H6(Asp25-Ser365) (ABIN6964097) produced by using human HEK293 cells
Clone:	DM153
Isotype:	IgG
Purification:	Purified from cell culture supernatant by affinity chromatography

## Target Details

Target:	B7-H6 (NCR3LG1)
Alternative Name:	B7H6 ( <a href="#">NCR3LG1 Products</a> )
Background:	Synonyms:B7-H6,NCR3LG1,B7 Homolog 6

## Target Details

Description: B7H6 belongs to the B7 family (see MIM 605402) and is selectively expressed on tumor cells. Interaction of B7H6 with NKp30 (NCR3

Molecular Weight: 50.8KDa

## Application Details

Application Notes: ELISA 1/5000-10000, Flow Cyt 1/100

Restrictions: For Research Use only

## Handling

Format: Lyophilized

Reconstitution: Reconstitute with deionized water

Buffer: Lyophilized from sterile PBS, pH 7.4. Normally 5 % - 8 % trehalose is added as protectants before lyophilization., 0.1 % Procline 300

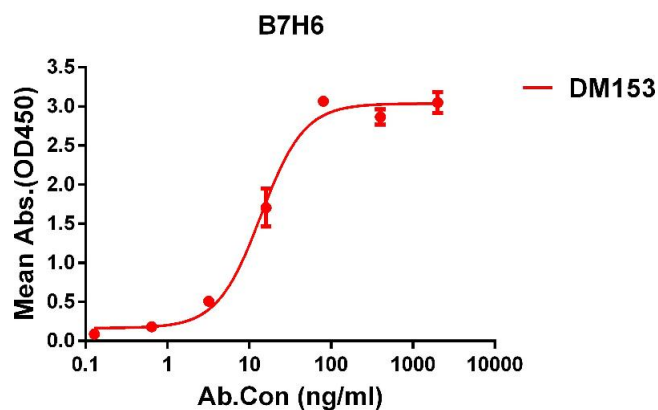
Preservative: ProClin

Precaution of Use: This product contains ProClin: a POISONOUS AND HAZARDOUS SUBSTANCE which should be handled by trained staff only.

Storage: -20 °C, -80 °C

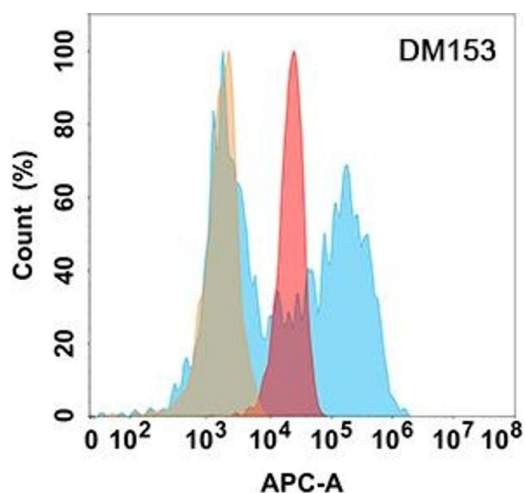
Storage Comment: Store at -20°C to -80°C for 12 months in lyophilized form. After reconstitution, if not intended for use within a month, aliquot and store at -80°C (Avoid repeated freezing and thawing).  
Lyophilized proteins are shipped at ambient temperature.

Expiry Date: 12 months



#### ELISA

**Image 1.** ELISA plate pre-coated by 1 µg/mL (100 µL/well) Human B7H6 protein, His tagged protein ((ABIN6964097, ABIN7042449 and ABIN7042450)) can bind Rabbit anti-B7H6 monoclonal antibody(clone: DM153) in a linear range of 5-100 ng/mL.



#### Flow Cytometry

**Image 2.** B7H6 protein is highly expressed on the surface of Expi293 cell membrane. Flow cytometry analysis with Anti-B7H6 (DM153) on Expi293 cells transfected with human B7H6 (Blue histogram) or Expi293 transfected with irrelevant protein (Red histogram), and Isotype antibody on Expi293 transfected with irrelevant protein (Orange histogram).