



[Go to Product page](#)

Datasheet for ABIN7092956
anti-CD200 antibody (AA 31-232)

2 Images

Overview

Quantity:	100 µg
Target:	CD200
Binding Specificity:	AA 31-232
Reactivity:	Human
Host:	Rabbit
Clonality:	Monoclonal
Conjugate:	This CD200 antibody is un-conjugated
Application:	Flow Cytometry (FACS), ELISA

Product Details

Immunogen:	Recombinant human CD200(Gln31-Gly232) (ABIN6961153) produced by using human HEK293 cells
Clone:	DM156
Isotype:	IgG
Purification:	Purified from cell culture supernatant by affinity chromatography

Target Details

Target:	CD200
Alternative Name:	CD200 (CD200 Products)
Background:	Synonyms:CD200,MOX1,MOX2,MRC,OX-2,My033

Target Details

Description: This gene encodes a type I membrane glycoprotein containing two extracellular immunoglobulin domains, a transmembrane and a cytoplasmic domain. This gene is expressed by various cell types, including B cells, a subset of T cells, thymocytes, endothelial cells, and neurons. The encoded protein plays an important role in immunosuppression and regulation of anti-tumor activity. Alternative splicing results in multiple transcript variants encoding different isoforms.

Molecular Weight: 36.6KDa

Application Details

Application Notes: ELISA 1/5000-10000, Flow Cyt 1/100

Restrictions: For Research Use only

Handling

Format: Lyophilized

Reconstitution: Reconstitute with deionized water

Buffer: Lyophilized from sterile PBS, pH 7.4. Normally 5 % - 8 % trehalose is added as protectants before lyophilization., 0.1 % Procline 300

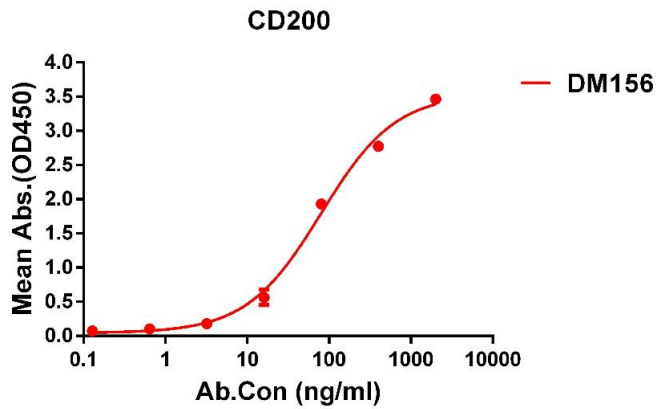
Preservative: ProClin

Precaution of Use: This product contains ProClin: a POISONOUS AND HAZARDOUS SUBSTANCE which should be handled by trained staff only.

Storage: -20 °C, -80 °C

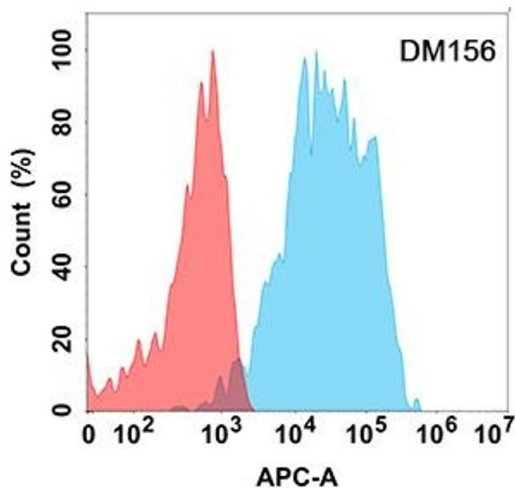
Storage Comment: Store at -20°C to -80°C for 12 months in lyophilized form. After reconstitution, if not intended for use within a month, aliquot and store at -80°C (Avoid repeated freezing and thawing).
Lyophilized proteins are shipped at ambient temperature.

Expiry Date: 12 months



ELISA

Image 1. ELISA plate pre-coated by 1 µg/mL (100 µL/well) Human CD200 protein, His tagged protein ((ABIN6961153, ABIN7042335 and ABIN7042336)) can bind Rabbit anti-CD200 monoclonal antibody(clone: DM156) in a linear range of 5-1000 ng/mL.



Flow Cytometry

Image 2. Flow cytometry analysis with Anti-CD200 (DM156) on Expi293 cells transfected with human CD200 (Blue histogram) or Expi293 transfected with irrelevant protein (Red histogram).