

Datasheet for ABIN7092960
anti-LAG3 antibody (AA 23-245)



[Go to Product page](#)

1 Image

Overview

Quantity:	100 µg
Target:	LAG3
Binding Specificity:	AA 23-245
Reactivity:	Human
Host:	Rabbit
Clonality:	Monoclonal
Conjugate:	This LAG3 antibody is un-conjugated
Application:	ELISA, Flow Cytometry (FACS)

Product Details

Immunogen:	Recombinant human LAG3(Leu23-Leu245) (ABIN6964105) produced by using human HEK293 cells
Clone:	DM160
Isotype:	IgG
Purification:	Purified from cell culture supernatant by affinity chromatography

Target Details

Target:	LAG3
Alternative Name:	LAG3 (LAG3 Products)
Background:	Synonyms:LAG-3, CD223

Target Details

Description: Lymphocyte-activation protein 3 belongs to Ig superfamily and contains 4 extracellular Ig-like domains. The LAG3 gene contains 8 exons. The sequence data, exon/intron organization, and chromosomal localization all indicate a close relationship of LAG3 to CD4. [provided by RefSeq, Jul 2008]

Molecular Weight: 57.4KDa

Pathways: [Regulation of Leukocyte Mediated Immunity](#), [Positive Regulation of Immune Effector Process](#), [Cancer Immune Checkpoints](#)

Application Details

Application Notes: ELISA 1/5000-10000, Flow Cyt 1/100

Restrictions: For Research Use only

Handling

Format: Lyophilized

Reconstitution: Reconstitute with deionized water

Buffer: Lyophilized from sterile PBS, pH 7.4. Normally 5 % - 8 % trehalose is added as protectants before lyophilization., 0.1 % Procline 300

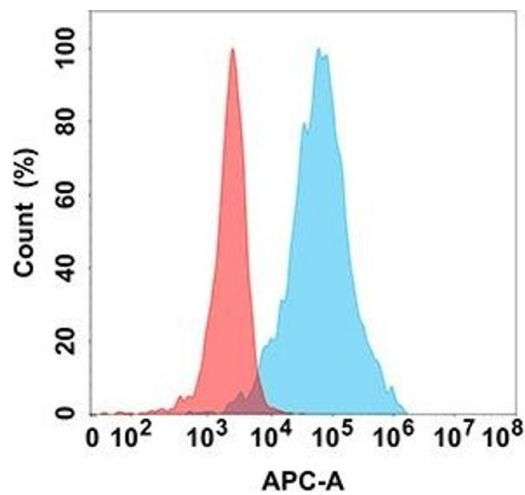
Preservative: ProClin

Precaution of Use: This product contains ProClin: a POISONOUS AND HAZARDOUS SUBSTANCE which should be handled by trained staff only.

Storage: -20 °C, -80 °C

Storage Comment: Store at -20°C to -80°C for 12 months in lyophilized form. After reconstitution, if not intended for use within a month, aliquot and store at -80°C (Avoid repeated freezing and thawing).
Lyophilized proteins are shipped at ambient temperature.

Expiry Date: 12 months



Flow Cytometry

Image 1. Flow cytometry analysis with Anti- (DM160) on Expi293 cells transfected with human (Blue histogram) or Expi293 transfected with irrelevant protein (Red histogram).