



[Go to Product page](#)

Datasheet for ABIN7092962

anti-EPH Receptor A3 antibody (AA 21-541)

1 Image

Overview

Quantity:	100 µg
Target:	EPH Receptor A3 (EPHA3)
Binding Specificity:	AA 21-541
Reactivity:	Human
Host:	Rabbit
Clonality:	Monoclonal
Conjugate:	This EPH Receptor A3 antibody is un-conjugated
Application:	ELISA, Flow Cytometry (FACS)

Product Details

Immunogen:	Recombinant human EPHA3(Glu21-Gln541) (ABIN6961115) produced by using human HEK293 cells
Clone:	DM162
Isotype:	IgG
Purification:	Purified from cell culture supernatant by affinity chromatography

Target Details

Target:	EPH Receptor A3 (EPHA3)
Alternative Name:	EPHA3 (EPHA3 Products)
Background:	Synonyms:TYRO4, HEK4, ETK1, ETK, EK4, HEK

Target Details

Description: This gene belongs to the ephrin receptor subfamily of the protein-tyrosine kinase family. EPH and EPH-related receptors have been implicated in mediating developmental events, particularly in the nervous system. Receptors in the EPH subfamily typically have a single kinase domain and an extracellular region containing a Cys-rich domain and 2 fibronectin type III repeats. The ephrin receptors are divided into 2 groups based on the similarity of their extracellular domain sequences and their affinities for binding ephrin-A and ephrin-B ligands. This gene encodes a protein that binds ephrin-A ligands. Two alternatively spliced transcript variants have been described for this gene.

Molecular Weight: 110KDa

Pathways: [RTK Signaling, Regulation of Cell Size](#)

Application Details

Application Notes: ELISA 1/5000-10000, Flow Cyt 1/100

Restrictions: For Research Use only

Handling

Format: Lyophilized

Reconstitution: Reconstitute with deionized water

Buffer: Lyophilized from sterile PBS, pH 7.4. Normally 5 % - 8 % trehalose is added as protectants before lyophilization., 0.1 % Procline 300

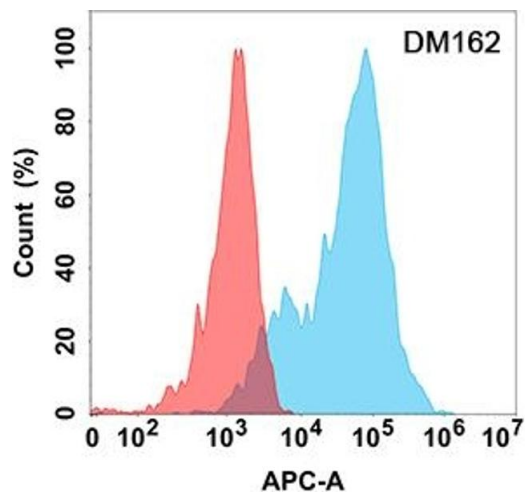
Preservative: ProClin

Precaution of Use: This product contains ProClin: a POISONOUS AND HAZARDOUS SUBSTANCE which should be handled by trained staff only.

Storage: -20 °C, -80 °C

Storage Comment: Store at -20°C to -80°C for 12 months in lyophilized form. After reconstitution, if not intended for use within a month, aliquot and store at -80°C (Avoid repeated freezing and thawing).
Lyophilized proteins are shipped at ambient temperature.

Expiry Date: 12 months



Flow Cytometry

Image 1. Flow cytometry analysis with Anti-EPHA3 (DM162) on Expi293 cells transfected with human EPHA3 (Blue histogram) or Expi293 transfected with irrelevant protein (Red histogram).