



[Go to Product page](#)

Datasheet for ABIN7092964  
**anti-CLEC12A antibody (AA 65-265)**

1 Image

Overview

Quantity:	100 µg
Target:	CLEC12A
Binding Specificity:	AA 65-265
Reactivity:	Human
Host:	Rabbit
Clonality:	Monoclonal
Conjugate:	This CLEC12A antibody is un-conjugated
Application:	ELISA, Flow Cytometry (FACS)

Product Details

Immunogen:	Recombinant human CLEC12A(His65-Ala265) (ABIN6964075) produced by using human HEK293 cells
Clone:	DM165
Isotype:	IgG
Purification:	Purified from cell culture supernatant by affinity chromatography

Target Details

Target:	CLEC12A
Alternative Name:	CLEC12A ( <a href="#">CLEC12A Products</a> )
Background:	Synonyms:CLEC12A,MICL,CLL-1,CLL1,DCAL2,DCAL-2,CD371

## Target Details

---

Description: This gene encodes a member of the C-type lectin/C-type lectin-like domain (CTL/CTLD) superfamily. Members of this family share a common protein fold and have diverse functions, such as cell adhesion, cell-cell signaling, glycoprotein turnover, and roles in inflammation and immune response. The protein encoded by this gene is a negative regulator of granulocyte and monocyte function. Several alternatively spliced transcript variants of this gene have been described, but the full-length nature of some of these variants has not been determined. This gene is closely linked to other CTL/CTLD superfamily members in the natural killer gene complex region on chromosome 12p13.

Molecular Weight: 30.8KDa

## Application Details

---

Application Notes: ELISA 1/5000-10000, Flow Cyt 1/100

Restrictions: For Research Use only

## Handling

---

Format: Lyophilized

Reconstitution: Reconstitute with deionized water

Buffer: Lyophilized from sterile PBS, pH 7.4. Normally 5 % - 8 % trehalose is added as protectants before lyophilization., 0.1 % Procline 300

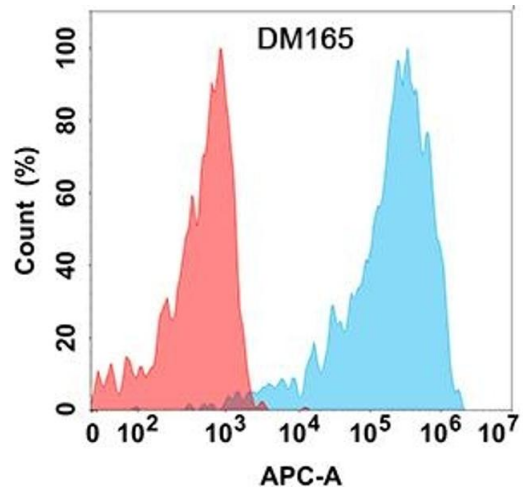
Preservative: ProClin

Precaution of Use: This product contains ProClin: a POISONOUS AND HAZARDOUS SUBSTANCE which should be handled by trained staff only.

Storage: -20 °C, -80 °C

Storage Comment: Store at -20°C to -80°C for 12 months in lyophilized form. After reconstitution, if not intended for use within a month, aliquot and store at -80°C (Avoid repeated freezing and thawing).  
Lyophilized proteins are shipped at ambient temperature.

Expiry Date: 12 months



### Flow Cytometry

**Image 1.** Flow cytometry analysis with Anti-CLEC12A (DM165) on Expi293 cells transfected with human CLEC12A (Blue histogram) or Expi293 transfected with irrelevant protein (Red histogram).