

Datasheet for ABIN7092966

**anti-EPH Receptor A2 antibody (AA 24-534)**[Go to Product page](#)**1** Image

## Overview

Quantity:	100 µg
Target:	EPH Receptor A2 (EPHA2)
Binding Specificity:	AA 24-534
Reactivity:	Human
Host:	Rabbit
Clonality:	Monoclonal
Conjugate:	This EPH Receptor A2 antibody is un-conjugated
Application:	ELISA, Flow Cytometry (FACS)

## Product Details

Immunogen:	Recombinant human EPHA2(Ala24-Asn534) (ABIN6964101) produced by using human HEK293 cells
Clone:	DM167
Isotype:	IgG
Purification:	Powder

## Target Details

Target:	EPH Receptor A2 (EPHA2)
Alternative Name:	EPHA2 ( <a href="#">EPHA2 Products</a> )
Background:	Synonyms:ARCC2, CTPA, CTPP1, CTRCT6, ECK

## Target Details

Description: This gene belongs to the ephrin receptor subfamily of the protein-tyrosine kinase family. EPH and EPH-related receptors have been implicated in mediating developmental events, particularly in the nervous system. Receptors in the EPH subfamily typically have a single kinase domain and an extracellular region containing a Cys-rich domain and 2 fibronectin type III repeats. The ephrin receptors are divided into 2 groups based on the similarity of their extracellular domain sequences and their affinities for binding ephrin-A and ephrin-B ligands. This gene encodes a protein that binds ephrin-A ligands. Mutations in this gene are the cause of certain genetically-related cataract disorders.

Molecular Weight: 108.3KDa

Pathways: [RTK Signaling](#)

## Application Details

Application Notes: ELISA 1/5000-10000, Flow Cyt 1/100

Restrictions: For Research Use only

## Handling

Format: Lyophilized

Reconstitution: Reconstitute with deionized water

Buffer: Lyophilized from sterile PBS, pH 7.4. Normally 5 % - 8 % trehalose is added as protectants before lyophilization., 0.1 % Procline 300

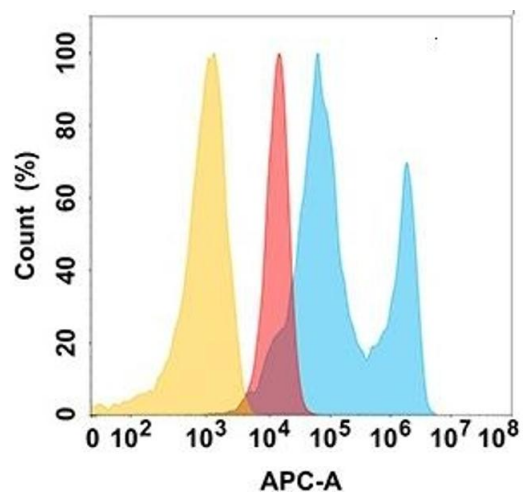
Preservative: ProClin

Precaution of Use: This product contains ProClin: a POISONOUS AND HAZARDOUS SUBSTANCE which should be handled by trained staff only.

Storage: -20 °C, -80 °C

Storage Comment: Store at -20°C to -80°C for 12 months in lyophilized form. After reconstitution, if not intended for use within a month, aliquot and store at -80°C (Avoid repeated freezing and thawing).  
Lyophilized proteins are shipped at ambient temperature.

Expiry Date: 12 months



### Flow Cytometry

**Image 1.** E protein is highly expressed on the surface of Expi293 cell membrane. Flow cytometry analysis with Anti-E (DM167) on Expi293 cells transfected with human E (Blue histogram) or Expi293 transfected with irrelevant protein (Red histogram), and Isotype antibody on Expi293 transfected with irrelevant protein (Orange histogram).