

Datasheet for ABIN7092968

## anti-PDCD1LG2 antibody (AA 20-219)



[Go to Product page](#)

### 1 Image

#### Overview

Quantity:	100 µg
Target:	PDCD1LG2
Binding Specificity:	AA 20-219
Reactivity:	Human
Host:	Rabbit
Clonality:	Monoclonal
Conjugate:	This PDCD1LG2 antibody is un-conjugated
Application:	ELISA, Flow Cytometry (FACS)

#### Product Details

Immunogen:	Recombinant human PDL2(Leu20-Pro219) (ABIN6964115) produced by using human HEK293 cells
Clone:	DM169
Isotype:	IgG
Purification:	Powder

#### Target Details

Target:	PDCD1LG2
Alternative Name:	PDL2 ( <a href="#">PDCD1LG2 Products</a> )
Background:	Synonyms:B7DC, bA574F11.2, Btdc, CD273, PD-L2, PDCD1L2, PDL2

## Target Details

Description:Involved in the costimulatory signal, essential for T-cell proliferation and IFNG production in a PDCCD1-independent manner. Interaction with PDCCD1 inhibits T-cell proliferation by blocking cell cycle progression and cytokine production (By similarity).

Molecular Weight: 31KDa

## Application Details

Application Notes: ELISA 1/5000-10000,Flow Cyt 1/100

Restrictions: For Research Use only

## Handling

Format: Lyophilized

Reconstitution: Reconstitute with deionized water

Buffer: Lyophilized from sterile PBS, pH 7.4. Normally 5 % - 8 % trehalose is added as protectants before lyophilization.,0.1 % Procline 300

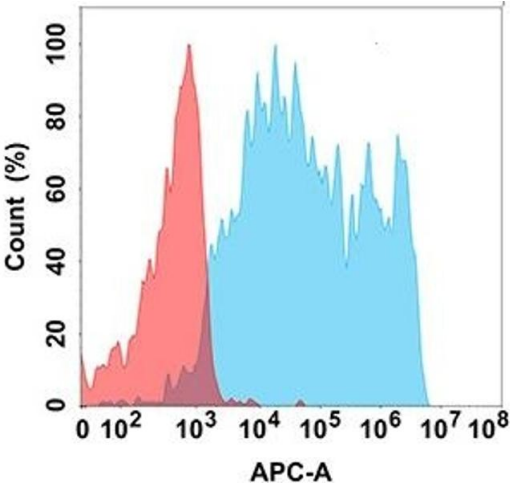
Preservative: ProClin

Precaution of Use: This product contains ProClin: a POISONOUS AND HAZARDOUS SUBSTANCE which should be handled by trained staff only.

Storage: -20 °C,-80 °C

Storage Comment: Store at -20°C to -80°C for 12 months in lyophilized form. After reconstitution, if not intended for use within a month, aliquot and store at -80°C (Avoid repeated freezing and thawing).  
Lyophilized proteins are shipped at ambient temperature.

Expiry Date: 12 months



Flow Cytometry

**Image 1.** Flow cytometry analysis with Anti- (DM169) on Expi293 cells transfected with human (Blue histogram) or Expi293 transfected with irrelevant protein (Red histogram).