



[Go to Product page](#)

Datasheet for ABIN7092972  
**anti-B7-H6 antibody (AA 25-262)**

1 Image

Overview

Quantity:	100 µg
Target:	B7-H6 (NCR3LG1)
Binding Specificity:	AA 25-262
Reactivity:	Human
Host:	Rabbit
Clonality:	Monoclonal
Conjugate:	This B7-H6 antibody is un-conjugated
Application:	ELISA, Flow Cytometry (FACS)

Product Details

Immunogen:	Recombinant human B7H6(Asp25-Ser262) (ABIN6964097) produced by using human HEK293 cells
Clone:	DM173
Isotype:	IgG
Purification:	Powder

Target Details

Target:	B7-H6 (NCR3LG1)
Alternative Name:	B7H6 ( <a href="#">NCR3LG1 Products</a> )
Background:	Synonyms:B7-H6,NCR3LG1,B7 Homolog 6

## Target Details

---

Description: B7H6 belongs to the B7 family (see MIM 605402) and is selectively expressed on tumor cells. Interaction of B7H6 with NKp30 (NCR3, MIM 611550) results in natural killer (NK) cell activation and cytotoxicity.

Molecular Weight: 50.8KDa

## Application Details

---

Application Notes: ELISA 1/5000-10000, Flow Cyt 1/100

Restrictions: For Research Use only

## Handling

---

Format: Lyophilized

Reconstitution: Reconstitute with deionized water

Buffer: Lyophilized from sterile PBS, pH 7.4. Normally 5 % - 8 % trehalose is added as protectants before lyophilization., 0.1 % Procline 300

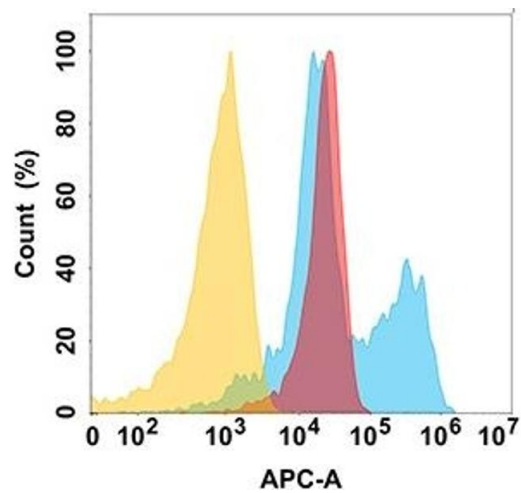
Preservative: ProClin

Precaution of Use: This product contains ProClin: a POISONOUS AND HAZARDOUS SUBSTANCE which should be handled by trained staff only.

Storage: -20 °C, -80 °C

Storage Comment: Store at -20°C to -80°C for 12 months in lyophilized form. After reconstitution, if not intended for use within a month, aliquot and store at -80°C (Avoid repeated freezing and thawing).  
Lyophilized proteins are shipped at ambient temperature.

Expiry Date: 12 months



### Flow Cytometry

**Image 1.** B7H6 protein is highly expressed on the surface of Expi293 cell membrane. Flow cytometry analysis with Anti-B7H6 (DM173) on Expi293 cells transfected with human B7H6 (Blue histogram) or Expi293 transfected with irrelevant protein (Red histogram), and Isotype antibody on Expi293 transfected with irrelevant protein (Orange histogram).