

Datasheet for ABIN7092973  
**anti-ROR2 antibody (AA 34-403)**



[Go to Product page](#)

1 Image

## Overview

Quantity:	100 µg
Target:	ROR2
Binding Specificity:	AA 34-403
Reactivity:	Human
Host:	Rabbit
Clonality:	Monoclonal
Conjugate:	This ROR2 antibody is un-conjugated
Application:	ELISA, Flow Cytometry (FACS)

## Product Details

Immunogen:	Recombinant human ROR2(Glu34-Gly403) (ABIN6964076) produced by using human HEK293 cells
Clone:	DM174
Isotype:	IgG
Purification:	Powder

## Target Details

Target:	ROR2
Alternative Name:	ROR2 ( <a href="#">ROR2 Products</a> )
Background:	Synonyms:ROR2,NTRKR2

## Target Details

Description: The protein encoded by this gene is a receptor protein tyrosine kinase and type I transmembrane protein that belongs to the ROR subfamily of cell surface receptors. The protein may be involved in the early formation of the chondrocytes and may be required for cartilage and growth plate development. Mutations in this gene can cause brachydactyly type B, a skeletal disorder characterized by hypoplasia/aplasia of distal phalanges and nails. In addition, mutations in this gene can cause the autosomal recessive form of Robinow syndrome, which is characterized by skeletal dysplasia with generalized limb bone shortening, segmental defects of the spine, brachydactyly, and a dysmorphic facial appearance.

Molecular Weight: 104.8KDa

Pathways: [RTK Signaling](#), [WNT Signaling](#)

## Application Details

Application Notes: ELISA 1/5000-10000, Flow Cyt 1/100

Restrictions: For Research Use only

## Handling

Format: Lyophilized

Reconstitution: Reconstitute with deionized water

Buffer: Lyophilized from sterile PBS, pH 7.4. Normally 5 % - 8 % trehalose is added as protectants before lyophilization., 0.1 % Procline 300

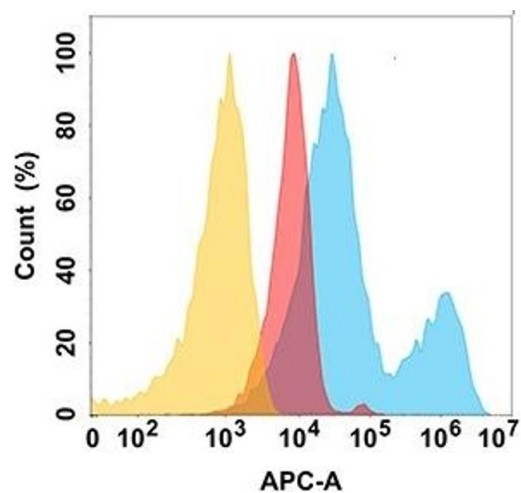
Preservative: ProClin

Precaution of Use: This product contains ProClin: a POISONOUS AND HAZARDOUS SUBSTANCE which should be handled by trained staff only.

Storage: -20 °C, -80 °C

Storage Comment: Store at -20°C to -80°C for 12 months in lyophilized form. After reconstitution, if not intended for use within a month, aliquot and store at -80°C (Avoid repeated freezing and thawing).  
Lyophilized proteins are shipped at ambient temperature.

Expiry Date: 12 months



### Flow Cytometry

**Image 1.** protein is highly expressed on the surface of Expi293 cell membrane. Flow cytometry analysis with Anti- (DM174) on Expi293 cells transfected with human (Blue histogram) or Expi293 transfected with irrelevant protein (Red histogram), and Isotype antibody on Expi293 transfected with irrelevant protein (Orange histogram).