

## Datasheet for ABIN709391 anti-Lamin B Receptor antibody (AA 1-100)



[Go to Product page](#)

### 3 Images

#### Overview

|                      |   |
|----------------------|---|
| Quantity:            | 100 µL  |
| Target:              | Lamin B Receptor (LBR)                              |
| Binding Specificity: | AA 1-100  |
| Reactivity:          | Human, Mouse  |
| Host:                | Rabbit  |
| Clonality:           | Polyclonal  |
| Conjugate:           | This Lamin B Receptor antibody is un-conjugated     |
| Application:         | Western Blotting (WB), ELISA, Flow Cytometry (FACS) |

#### Product Details

|                       |   |
|-----------------------|---|
| Immunogen:            | KLH conjugated synthetic peptide derived from human Lamin B Receptor              |
| Isotype:              | IgG   |
| Specificity:          | The immunogen for this product has partial sequence similarity to SEPT8 and SEPT2 |
| Cross-Reactivity:     | Human, Mouse  |
| Predicted Reactivity: | Rat,Cow,Horse,Rabbit  |
| Purification:         | Purified by Protein A.  |

#### Target Details

|                   |   |
|-------------------|---|
| Target:           | Lamin B Receptor (LBR)                            |
| Alternative Name: | Lamin B Receptor ( <a href="#">LBR Products</a> ) |

## Target Details

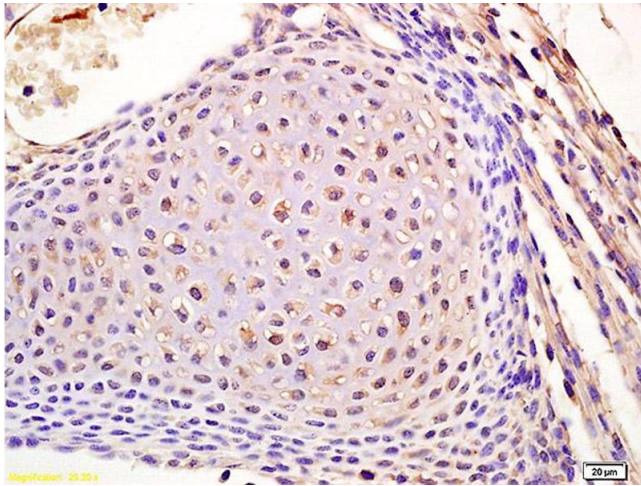
|             |  |
|-------------|--|
| Background: | <p>Synonyms: PHA, LMN2R, TDRD18, DHCR14B, Lamin-B receptor, Integral nuclear envelope inner membrane protein, LBR</p> <p>Background: Lamins are nuclear membrane proteins that serve to maintain specific cellular functions, such as DNA replication and chromatin organization. Lamin B receptor (LBR) is an integral protein of the nuclear envelope inner membrane. It is phosphorylated by CDC2 protein kinase in mitosis when the inner nuclear membrane breaks down into vesicles that dissociate from the lamina and the chromatin. It is phosphorylated by different protein kinases in interphase when the membrane is associated with these structures. The cleavage of lamins results in nuclear disregulation and cell death.</p> |
| Gene ID:    | 3930   |
| UniProt:    | <a href="#">Q14739</a>   |

## Application Details

|                    |  |
|--------------------|--|
| Application Notes: | <p>WB 1:300-5000</p> <p>ELISA 1:500-1000</p> <p>FCM 1:20-100</p> |
| Restrictions:      | For Research Use only  |

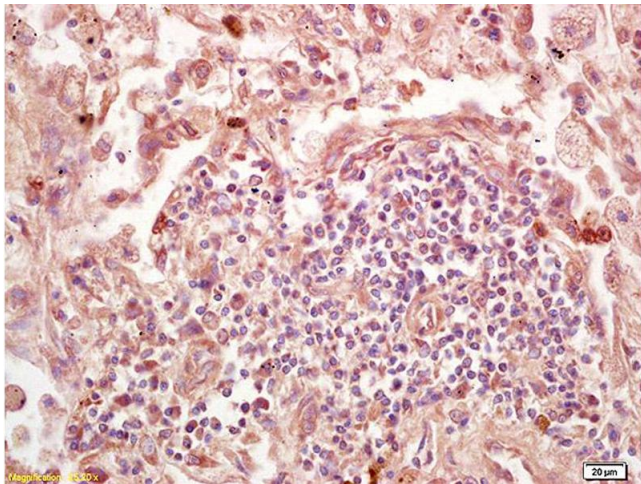
## Handling

|                    |  |
|--------------------|--|
| Format:            | Liquid   |
| Concentration:     | 1 µg/µL  |
| Buffer:            | 0.01M TBS( pH 7.4) with 1 % BSA, 0.02 % Proclin300 and 50 % Glycerol.  |
| Preservative:      | ProClin  |
| Precaution of Use: | This product contains ProClin: a POISONOUS AND HAZARDOUS SUBSTANCE, which should be handled by trained staff only. |
| Storage:           | 4 °C,-20 °C  |
| Storage Comment:   | Shipped at 4°C. Store at -20°C for one year. Avoid repeated freeze/thaw cycles.                                    |
| Expiry Date:       | 12 months  |



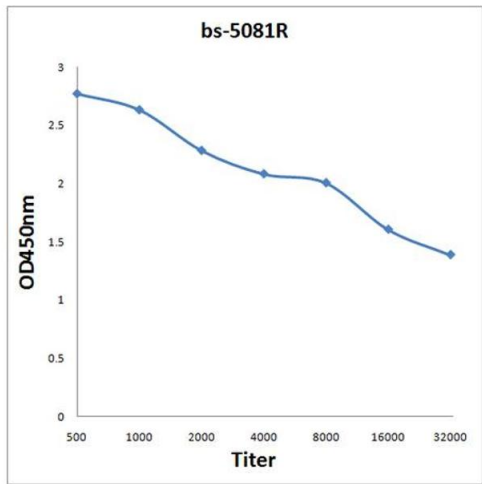
#### Immunohistochemistry

**Image 1.** Formalin-fixed and paraffin embedded humanlung carcinoma labeled with Rabbit Anti Lamin B Receptor Polyclonal Antibody, Unconjugated (ABIN709391) at 1:200 followed by conjugation to the secondary antibody and DAB staining



#### Immunohistochemistry

**Image 2.** Formalin-fixed and paraffin embedded mouse embryo labeled with Rabbit Anti Lamin B Receptor Polyclonal Antibody, Unconjugated (ABIN709391) at 1:200 followed by conjugation to the secondary antibody and DAB staining



#### ELISA

**Image 3.** Antigen: 0.2 µg/100 µL Primary: Antiserum, 1:500, 1:1000, 1:2000, 1:4000, 1:8000, 1:16000, 1:32000; Secondary: HRP conjugated Goat-Anti-Rabbit IgG at 1: 5000; TMB staining; Read the data in MicroplateReader by 450