

Datasheet for ABIN709541
anti-PHYH antibody (AA 1-100)

2 Images

[Go to Product page](#)

Overview

Quantity:	100 µL
Target:	PHYH
Binding Specificity:	AA 1-100
Reactivity:	Human
Host:	Rabbit
Clonality:	Polyclonal
Conjugate:	This PHYH antibody is un-conjugated
Application:	Western Blotting (WB), ELISA, Immunofluorescence (Cultured Cells) (IF (cc)), Immunofluorescence (Paraffin-embedded Sections) (IF (p)), Immunohistochemistry (Paraffin-embedded Sections) (IHC (p)), Immunohistochemistry (Frozen Sections) (IHC (fro))

Product Details

Immunogen:	KLH conjugated synthetic peptide derived from human PHYH
Isotype:	IgG
Cross-Reactivity:	Human
Predicted Reactivity:	Mouse,Rat,Dog,Cow,Rabbit
Purification:	Purified by Protein A.

Target Details

Target:	PHYH
---------	------

Target Details

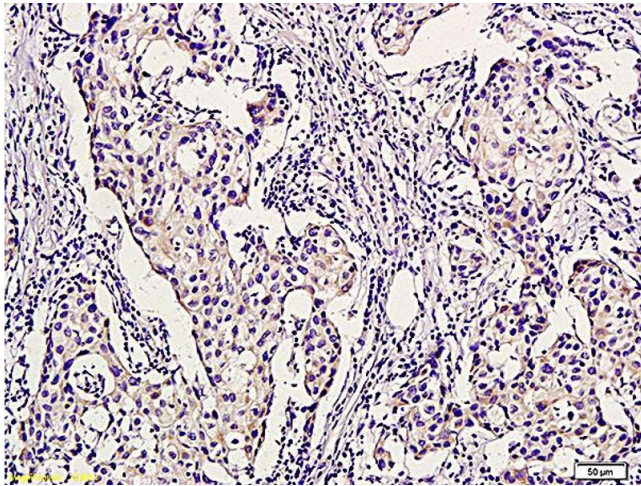
Alternative Name:	PHYH (PHYH Products)
Background:	Synonyms: RD, LN1, PAHX, LNAP1, PHYH1, Phytanoyl-CoA dioxygenase, peroxisomal, Phytanic acid oxidase, Phytanoyl-CoA alpha-hydroxylase, PhyH Background: Converts phytanoyl-CoA to 2-hydroxyphytanoyl-CoA.
Gene ID:	5264
UniProt:	O14832
Pathways:	Monocarboxylic Acid Catabolic Process

Application Details

Application Notes:	WB 1:300-5000 ELISA 1:500-1000 IHC-P 1:200-400 IHC-F 1:100-500 IF(IHC-P) 1:50-200 IF(IHC-F) 1:50-200 IF(ICC) 1:50-200
Restrictions:	For Research Use only

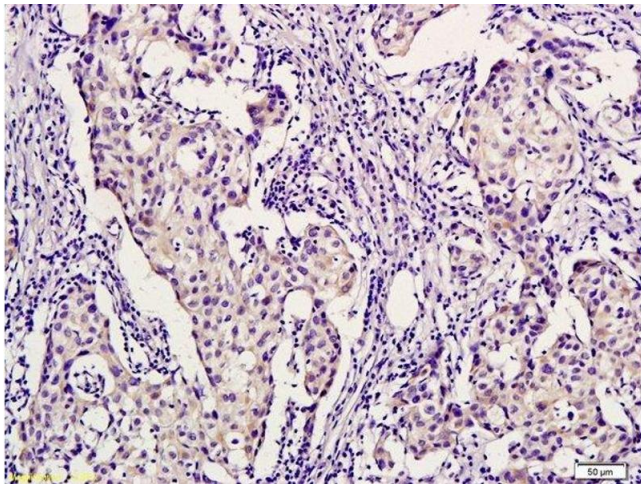
Handling

Format:	Liquid
Concentration:	1 µg/µL
Buffer:	0.01M TBS(pH 7.4) with 1 % BSA, 0.02 % Proclin300 and 50 % Glycerol.
Preservative:	ProClin
Precaution of Use:	This product contains ProClin: a POISONOUS AND HAZARDOUS SUBSTANCE, which should be handled by trained staff only.
Storage:	4 °C,-20 °C
Storage Comment:	Shipped at 4°C. Store at -20°C for one year. Avoid repeated freeze/thaw cycles.
Expiry Date:	12 months



Immunohistochemistry

Image 1. Formalin-fixed and paraffin embedded human breast cancer labeled with Anti-PHYH Polyclonal Antibody, Unconjugated (ABIN709541) followed by conjugation to the secondary antibody and DAB staining



Immunohistochemistry (Paraffin-embedded Sections)

Image 2. Formalin-fixed and paraffin embedded human breast cancer labeled with Anti-PHYH Polyclonal Antibody, Unconjugated followed by conjugation to the secondary antibody and DAB staining