

Datasheet for ABIN709721  
**anti-PTPMT1 antibody (AA 101-201)**[Go to Product page](#)

## 2 Images

## Overview

Quantity:	100 µL
Target:	PTPMT1
Binding Specificity:	AA 101-201
Reactivity:	Human
Host:	Rabbit
Clonality:	Polyclonal
Conjugate:	This PTPMT1 antibody is un-conjugated
Application:	Western Blotting (WB), ELISA, Immunofluorescence (Cultured Cells) (IF (cc)), Immunofluorescence (Paraffin-embedded Sections) (IF (p)), Immunohistochemistry (Paraffin- embedded Sections) (IHC (p)), Immunohistochemistry (Frozen Sections) (IHC (fro))

## Product Details

Immunogen:	KLH conjugated synthetic peptide derived from human PTPMT1
Isotype:	IgG
Cross-Reactivity:	Human
Predicted Reactivity:	Mouse,Rat,Dog,Cow,Pig,Horse
Purification:	Purified by Protein A.

## Target Details

Target:	PTPMT1
---------	--------

## Target Details

Alternative Name:	Ptpmt1 ( <a href="#">PTPMT1 Products</a> )
Background:	<p>Synonyms: DUSP23, FLJ46081, MOSP, NB4 apoptosis/dferentiation related protein, Phosphatidylglycerophosphatase and protein-tyrosine phosphatase 1, Phosphoinositide lipid phosphatase, PLIP, PNAS 129, protein tyrosine phosphatase mitochondrial 1, Protein-tyrosine phosphatase mitochondrial 1, pten like phosphatase, PTEN-like phosphatase, PTPM1_HUMAN, Ptpmt1.</p> <p>Background: This protein phosphatase specifically mediates the dephosphorylation of mitochondrial proteins and consequently plays a central role in ATP production. It probably has a preference for proteins phosphorylated on Ser and/or Thr residues compared to phosphorylation on Tyr residues. It is likely to be involved in the regulation of insulin secretion in pancreatic beta cells.</p>
Gene ID:	399671
Pathways:	<a href="#">Inositol Metabolic Process</a>

## Application Details

Application Notes:	WB 1:300-5000 ELISA 1:500-1000 IHC-P 1:200-400 IHC-F 1:100-500 IF(IHC-P) 1:50-200 IF(IHC-F) 1:50-200 IF(ICC) 1:50-200
Restrictions:	For Research Use only

## Handling

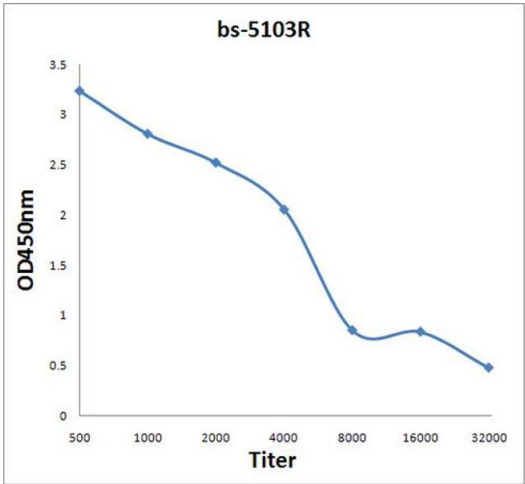
Format:	Liquid
Concentration:	1 µg/µL
Buffer:	0.01M TBS( pH 7.4) with 1 % BSA, 0.02 % Proclin300 and 50 % Glycerol.
Preservative:	ProClin
Precaution of Use:	This product contains ProClin: a POISONOUS AND HAZARDOUS SUBSTANCE, which should be handled by trained staff only.
Storage:	4 °C,-20 °C

Handling

Storage Comment: Shipped at 4°C. Store at -20°C for one year. Avoid repeated freeze/thaw cycles.

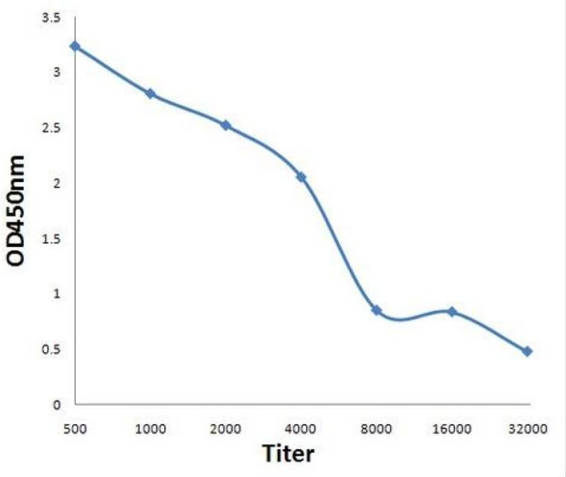
Expiry Date: 12 months

Images



ELISA

**Image 1.** Antigen: 2 µg/100 µL Primary: Antiserum, 1:500, 1:1000, 1:2000, 1:4000, 1:8000, 1:16000, 1:32000; Secondary: HRP conjugated Rabbit Anti-Goat IgG at 1: 5000; TMB staining Read the data in Microplate Reader by 450nm.



ELISA

**Image 2.** Antigen: 0.2ug/100ul, Primary: Antiserum, 1:500, 1:1000, 1:2000, 1:4000, 1:8000, 1:16000, 1:32000, Secondary: HRP conjugated Goat-Anti-Rabbit IgG at 1: 5000, TMB staining, Read the data in MicroplateReader by 450nm