

Datasheet for ABIN709841
anti-SIGMAR1 antibody (AA 21-120)

2 Images

[Go to Product page](#)

Overview

Quantity:	100 µL
Target:	SIGMAR1
Binding Specificity:	AA 21-120
Reactivity:	Human, Mouse, Rat
Host:	Rabbit
Clonality:	Polyclonal
Conjugate:	This SIGMAR1 antibody is un-conjugated
Application:	Western Blotting (WB), ELISA, Immunocytochemistry (ICC), Immunohistochemistry (Paraffin-embedded Sections) (IHC (p)), Immunofluorescence (Cultured Cells) (IF (cc)), Immunofluorescence (Paraffin-embedded Sections) (IF (p)), Immunohistochemistry (Frozen Sections) (IHC (fro))

Product Details

Immunogen:	KLH conjugated synthetic peptide derived from human OPRS1
Isotype:	IgG
Cross-Reactivity:	Human, Mouse, Rat
Predicted Reactivity:	Dog,Cow,Pig,Rabbit
Purification:	Purified by Protein A.

Target Details

Target:	SIGMAR1
---------	---------

Target Details

Alternative Name: OPRS1 ([SIGMAR1 Products](#))

Background: Synonyms: SRBP, ALS16, OPRS1, SR-BP, SIG-1R, SR-BP1, sigma1R, hSigmaR1, Sigma non-opioid intracellular receptor 1, Aging-associated gene 8 protein, SR31747-binding protein, Sigma 1-type opioid receptor, Sigma1-receptor, SIGMAR1, AAG8

Background: Functions in lipid transport from the endoplasmic reticulum and is involved in a wide array of cellular functions probably through regulation of the biogenesis of lipid microdomains at the plasma membrane. Involved in the regulation of different receptors it plays a role in BDNF signaling and EGF signaling. Also regulates ion channels like the potassium channel and could modulate neurotransmitter release. Plays a role in calcium signaling through modulation together with ANK2 of the ITP3R-dependent calcium efflux at the endoplasmic reticulum. Plays a role in several other cell functions including proliferation, survival and death. Originally identified for its ability to bind various psychoactive drugs it is involved in learning processes, memory and mood alteration.

Gene ID: 10280

UniProt: [Q99720](#)

Pathways: [SARS-CoV-2 Protein Interactome](#)

Application Details

Application Notes: WB 1:300-5000
ELISA 1:500-1000
IHC-P 1:200-400
IHC-F 1:100-500
IF(IHC-P) 1:50-200
IF(IHC-F) 1:50-200
IF(ICC) 1:50-200
ICC 1:100-500

Restrictions: For Research Use only

Handling

Format: Liquid

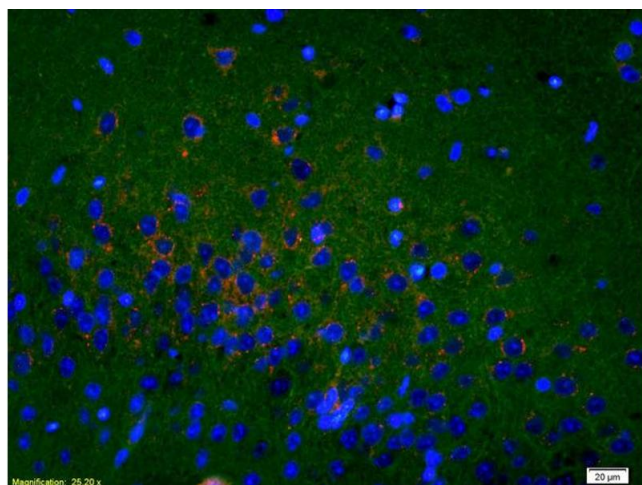
Concentration: 1 µg/µL

Buffer: 0.01M TBS(pH 7.4) with 1 % BSA, 0.02 % Proclin300 and 50 % Glycerol.

Handling

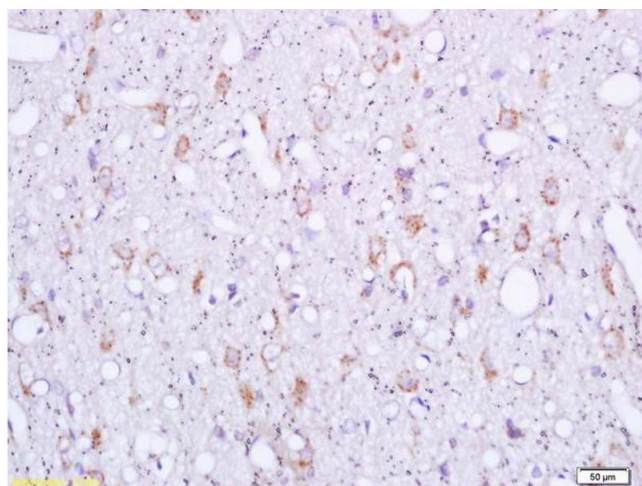
Preservative:	ProClin
Precaution of Use:	This product contains ProClin: a POISONOUS AND HAZARDOUS SUBSTANCE, which should be handled by trained staff only.
Storage:	4 °C,-20 °C
Storage Comment:	Shipped at 4°C. Store at -20°C for one year. Avoid repeated freeze/thaw cycles.
Expiry Date:	12 months

Images



Immunofluorescence

Image 1. Formalin-fixed and paraffin embedded rat brain labeled with Rabbit Anti Sigma1R/OPRS1/Sigma Receptor Polyclonal Antibody, Unconjugated (ABIN709841) at 1:200, overnight at 4°C. The secondary antibody was Goat Anti-Rabbit IgG, Cy3 conjugated used at 1:200 dilution for 40 minutes at 37°C.



Immunohistochemistry

Image 2. Formalin-fixed and paraffin embedded rat brain labeled with Rabbit Anti Sigma1R/OPRS1/Sigma Receptor Polyclonal Antibody, Unconjugated (ABIN709841) at 1:200 followed by conjugation to the secondary antibody and DAB staining