

Datasheet for ABIN7101302
anti-ELP3/KAT9 antibody



[Go to Product page](#)

3 Images

Overview

Quantity:	20 µL
Target:	ELP3/KAT9 (ELP3)
Reactivity:	Human
Host:	Rabbit
Clonality:	Monoclonal
Conjugate:	This ELP3/KAT9 antibody is un-conjugated
Application:	Western Blotting (WB), Immunohistochemistry (IHC)

Product Details

Immunogen:	A synthesized peptide derived from human KAT9/Elp3
Isotype:	IgG
Cross-Reactivity:	Human, Mouse, Rat
Characteristics:	Monoclonal Antibodies
Purification:	Affinity purification

Target Details

Target:	ELP3/KAT9 (ELP3)
Alternative Name:	ELP3 (ELP3 Products)
Background:	ELP3 is the catalytic subunit of the histone acetyltransferase elongator complex, which contributes to transcript elongation and also regulates the maturation of projection neurons

Target Details

(Creppe et al., 2009 [PubMed 19185337]).[supplied by OMIM, Apr 2009],KAT9,Epigenetic writers and erasers of core Histones,Epigenetic writers and erasers of core Histones_Acetylation,Epigenetics & Nuclear Signaling,ELP3

Molecular Weight: 62 kDa

Gene ID: 55140

UniProt: [Q9H9T3](#)

Application Details

Application Notes: WB,1:500 - 1:2000,IHC,1:50 - 1:200

Restrictions: For Research Use only

Handling

Buffer: PBS with 0.02 % sodium azide,0.05 % BSA,50 % glycerol, pH 7.3.

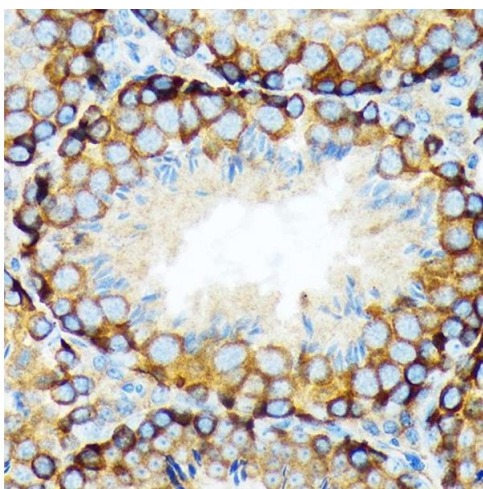
Preservative: Sodium azide

Precaution of Use: This product contains Sodium azide: a POISONOUS AND HAZARDOUS SUBSTANCE which should be handled by trained staff only.

Storage: -20 °C

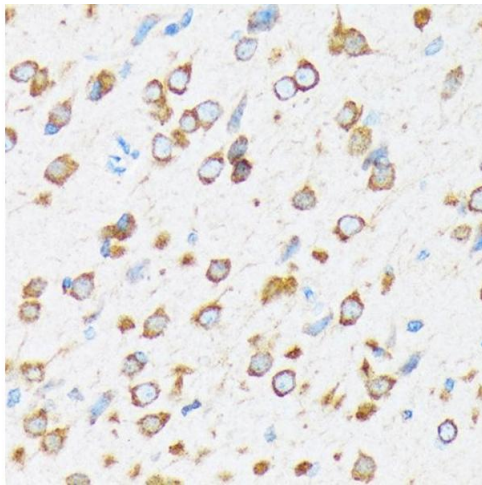
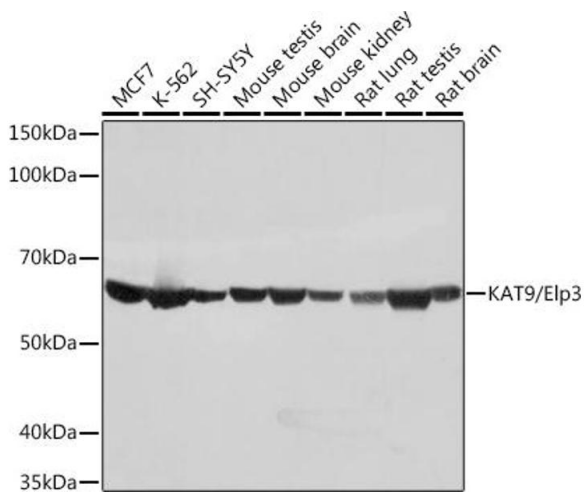
Storage Comment: Store at -20°C. Avoid freeze / thaw cycles.

Images



Immunohistochemistry

Image 1. Immunohistochemistry of paraffin-embedded mouse testis using K/Elp3 Rabbit mAb (ABIN1680361, ABIN3015008, ABIN3015009 and ABIN7101302) at dilution of 1:100 (40x lens). Perform microwave antigen retrieval with 10 mM Tris/EDTA buffer pH 9.0 before commencing with IHC staining protocol.



Western Blotting

Image 2. Western blot analysis of extracts of various cell lines, using K/Elp3 Rabbit mAb (ABIN1680361, ABIN3015008, ABIN3015009 and ABIN7101302) at 1:1000 dilution. Secondary antibody: HRP Goat Anti-Rabbit IgG (H+L) (ABIN1684268 and ABIN3020597) at 1:10000 dilution. Lysates/proteins: 25 µg per lane. Blocking buffer: 3 % nonfat dry milk in TBST. Detection: ECL Basic Kit (RM00020). Exposure time: 1s.

Immunohistochemistry

Image 3. Immunohistochemistry of paraffin-embedded rat brain using K/Elp3 Rabbit mAb (ABIN1680361, ABIN3015008, ABIN3015009 and ABIN7101302) at dilution of 1:100 (40x lens). Perform microwave antigen retrieval with 10 mM Tris/EDTA buffer pH 9.0 before commencing with IHC staining protocol.