



Datasheet for ABIN7101308  
**anti-Polybromo 1 antibody**



[Go to Product page](#)

4 Images

### Overview

Quantity:	20 µL
Target:	Polybromo 1 (PBRM1)
Reactivity:	Human
Host:	Rabbit
Clonality:	Monoclonal
Conjugate:	This Polybromo 1 antibody is un-conjugated
Application:	Western Blotting (WB), Immunohistochemistry (IHC)

### Product Details

Immunogen:	A synthesized peptide derived from human PBRM1
Isotype:	IgG
Cross-Reactivity:	Human, Mouse, Rat
Characteristics:	Monoclonal Antibodies
Purification:	Affinity purification

### Target Details

Target:	Polybromo 1 (PBRM1)
Alternative Name:	PBRM1 ( <a href="#">PBRM1 Products</a> )
Background:	This locus encodes a subunit of ATP-dependent chromatin-remodeling complexes. The encoded protein has been identified as an integral component of complexes necessary for

## Target Details

---

ligand-dependent transcriptional activation by nuclear hormone receptors. Mutations at this locus have been associated with primary clear cell renal cell carcinoma. [provided by RefSeq, Feb 2012],BAF180, PB1,Chromatin Remodeling,Epigenetics & Nuclear Signaling,PBRM1

Molecular Weight: 193 kDa

Gene ID: 55193

UniProt: [Q86U86](#)

## Application Details

---

Application Notes: WB,1:500 - 1:2000,IHC,1:50 - 1:200

Restrictions: For Research Use only

## Handling

---

Format: Liquid

Buffer: PBS with 0.02 % sodium azide,0.05 % BSA,50 % glycerol, pH 7.3.

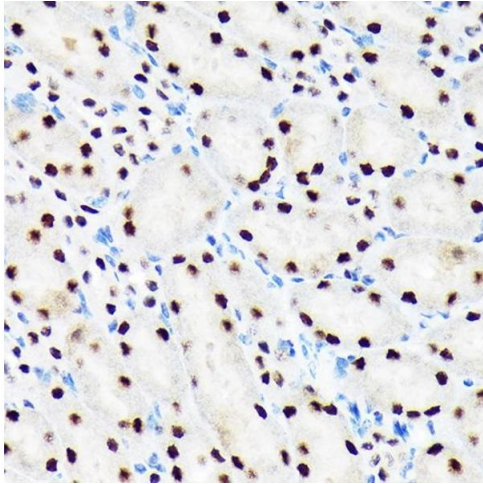
Preservative: Sodium azide

Precaution of Use: This product contains Sodium azide: a POISONOUS AND HAZARDOUS SUBSTANCE which should be handled by trained staff only.

Handling Advice: Avoid freeze / thaw cycles

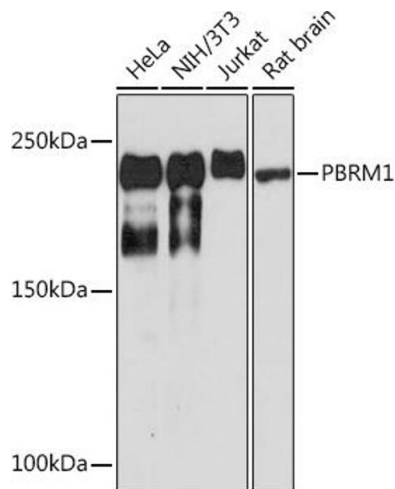
Storage: -20 °C

Storage Comment: Store at -20°C. Avoid freeze / thaw cycles.



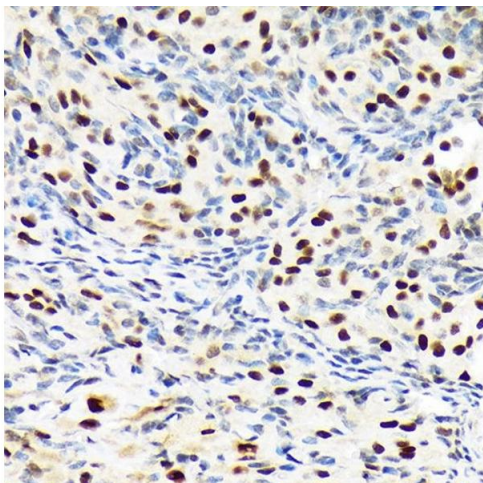
### Immunohistochemistry

**Image 1.** Immunohistochemistry of paraffin-embedded mouse kidney using PBRM1 Rabbit mAb (ABIN1512585, ABIN3020942, ABIN3020943 and ABIN7101308) at dilution of 1:100 (40x lens). Perform microwave antigen retrieval with 10 mM Tris/EDTA buffer pH 9.0 before commencing with IHC staining protocol.



### Western Blotting

**Image 2.** Western blot analysis of extracts of various cell lines, using PBRM1 Rabbit mAb (ABIN1512585, ABIN3020942, ABIN3020943 and ABIN7101308) at 1:1000 dilution. Secondary antibody: HRP Goat Anti-Rabbit IgG (H+L) (ABIN1684268 and ABIN3020597) at 1:10000 dilution. Lysates/proteins: 25 µg per lane. Blocking buffer: 3 % nonfat dry milk in TBST. Detection: ECL Basic Kit (RM00020). Exposure time: 3 min.



### Immunohistochemistry

**Image 3.** Immunohistochemistry of paraffin-embedded rat ovary using PBRM1 Rabbit mAb (ABIN1512585, ABIN3020942, ABIN3020943 and ABIN7101308) at dilution of 1:100 (40x lens). Perform microwave antigen retrieval with 10 mM Tris/EDTA buffer pH 9.0 before commencing with IHC staining protocol.

Please check the [product details page](#) for more images. Overall 4 images are available for ABIN7101308.