



[Go to Product page](#)

Datasheet for ABIN7101309

## anti-CHRNA4 antibody

### 1 Image

#### Overview

Quantity:	20 µL
Target:	CHRNA4
Reactivity:	Human
Host:	Rabbit
Clonality:	Monoclonal
Conjugate:	This CHRNA4 antibody is un-conjugated
Application:	Western Blotting (WB)

#### Product Details

Immunogen:	A synthesized peptide derived from human ACHA4
Isotype:	IgG
Cross-Reactivity:	Human, Mouse, Rat
Characteristics:	Monoclonal Antibodies
Purification:	Affinity purification

#### Target Details

Target:	CHRNA4
Alternative Name:	CHRNA4 ( <a href="#">CHRNA4 Products</a> )
Background:	This gene encodes a nicotinic acetylcholine receptor, which belongs to a superfamily of ligand-gated ion channels that play a role in fast signal transmission at synapses. These pentameric

## Target Details

---

receptors can bind acetylcholine, which causes an extensive change in conformation that leads to the opening of an ion-conducting channel across the plasma membrane. This protein is an integral membrane receptor subunit that can interact with either nAChR beta-2 or nAChR beta-4 to form a functional receptor. Mutations in this gene cause nocturnal frontal lobe epilepsy type 1. Polymorphisms in this gene that provide protection against nicotine addiction have been described. Alternative splicing results in multiple transcript variants. [provided by RefSeq, Feb 2012],BFNC, EBN, EBN1, NACHR, NACHRA4, NACRA4,Cancer,Endocrine & Metabolism,Neurodegenerative Diseases,Neurodegenerative Diseases\_Amyloid Plaque and Neurofibrillary Tangle Formation in Alzheimers Disease,Neuroscience,CHRNA4

---

Molecular Weight: 70 kDa

---

Gene ID: 1137

---

UniProt: [P43681](#)

---

Pathways: [Synaptic Membrane](#)

## Application Details

---

---

Application Notes: WB,1:500 - 1:2000

---

Restrictions: For Research Use only

## Handling

---

---

Format: Liquid

---

Buffer: PBS with 0.02 % sodium azide,0.05 % BSA,50 % glycerol, pH 7.3.

---

Preservative: Sodium azide

---

Precaution of Use: This product contains Sodium azide: a POISONOUS AND HAZARDOUS SUBSTANCE which should be handled by trained staff only.

---

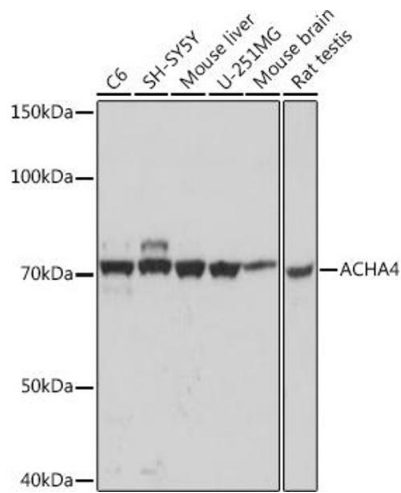
Handling Advice: Avoid freeze / thaw cycles

---

Storage: -20 °C

---

Storage Comment: Store at -20°C. Avoid freeze / thaw cycles.



### Western Blotting

**Image 1.** Western blot analysis of extracts of various cell lines, using Rabbit mAb (ABIN1512640, ABIN7101309, ABIN7101310 and ABIN7101311) at 1:1000 dilution. Secondary antibody: HRP Goat Anti-Rabbit IgG (H+L) (ABIN1684268 and ABIN3020597) at 1:10000 dilution. Lysates/proteins: 25 µg per lane. Blocking buffer: 3% nonfat dry milk in TBST. Detection: ECL Basic Kit (RM00020). Exposure time: 1s.