



Datasheet for ABIN7101315
anti-TIMELESS antibody



[Go to Product page](#)

1 Image

Overview

Quantity:	20 µL
Target:	TIMELESS
Reactivity:	Human
Host:	Rabbit
Clonality:	Monoclonal
Conjugate:	This TIMELESS antibody is un-conjugated
Application:	Western Blotting (WB)

Product Details

Immunogen:	A synthesized peptide derived from human Timeless
Isotype:	IgG
Cross-Reactivity:	Human
Characteristics:	Monoclonal Antibodies
Purification:	Affinity purification

Target Details

Target:	TIMELESS
Alternative Name:	TIMELESS (TIMELESS Products)
Background:	The protein encoded by this gene is highly conserved and is involved in cell survival after damage or stress, increase in DNA polymerase epsilon activity, maintenance of telomere

Target Details

length, and epithelial cell morphogenesis. The encoded protein also plays a role in the circadian rhythm autoregulatory loop, interacting with the PERIOD genes (PER1, PER2, and PER3) and others to downregulate activation of PER1 by CLOCK/ARNTL. Changes in this gene or its expression may promote prostate cancer, lung cancer, breast cancer, and mental disorders. [provided by RefSeq, Feb 2014],TIM, TIM1, hTIM,Apoptosis,Cell Biology & Developmental Biology,DNA Damage & Repair,Epigenetics & Nuclear Signaling,TIMELESS

Molecular Weight: 150 kDa

Gene ID: 8914

UniProt: [Q9UNS1](#)

Pathways: [Protein targeting to Nucleus](#), [Photoperiodism](#)

Application Details

Application Notes: WB,1:500 - 1:2000

Restrictions: For Research Use only

Handling

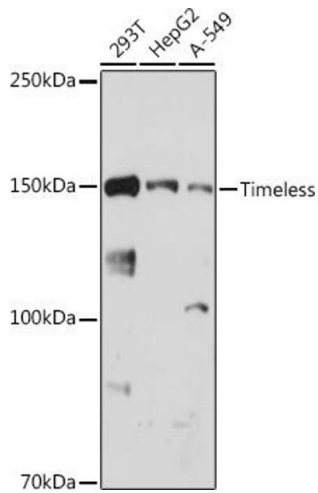
Buffer: PBS with 0.02 % sodium azide,0.05 % BSA,50 % glycerol, pH 7.3.

Preservative: Sodium azide

Precaution of Use: This product contains Sodium azide: a POISONOUS AND HAZARDOUS SUBSTANCE which should be handled by trained staff only.

Storage: -20 °C

Storage Comment: Store at -20°C. Avoid freeze / thaw cycles.



Western Blotting

Image 1. Western blot analysis of extracts of various cell lines, using Timeless antibody (ABIN1682797, ABIN7101315, ABIN7101316 and ABIN7101317) at 1:1000 dilution. Secondary antibody: HRP Goat Anti-Rabbit IgG (H+L) (ABIN1684268 and ABIN3020597) at 1:10000 dilution. Lysates/proteins: 25 µg per lane. Blocking buffer: 3 % nonfat dry milk in TBST. Detection: ECL Basic Kit (RM00020). Exposure time: 30s.