



[Go to Product page](#)

Datasheet for ABIN7101332

## anti-RCC1 antibody

### 3 Images

#### Overview

Quantity:	20 µL
Target:	RCC1
Reactivity:	Human
Host:	Rabbit
Clonality:	Monoclonal
Conjugate:	This RCC1 antibody is un-conjugated
Application:	Western Blotting (WB), Immunohistochemistry (IHC)

#### Product Details

Immunogen:	A synthesized peptide derived from human RCC1
Isotype:	IgG
Cross-Reactivity:	Human, Mouse, Rat
Characteristics:	Monoclonal Antibodies
Purification:	Affinity purification

#### Target Details

Target:	RCC1
Alternative Name:	RCC1 ( <a href="#">RCC1 Products</a> )
Background:	Guanine-nucleotide releasing factor that promotes the exchange of Ran-bound GDP by GTP, and thereby plays an important role in RAN-mediated functions in nuclear import and mitosis.

## Target Details

---

Contributes to the generation of high levels of chromosome-associated, GTP-bound RAN, which is important for mitotic spindle assembly and normal progress through mitosis. Via its role in maintaining high levels of GTP-bound RAN in the nucleus, contributes to the release of cargo proteins from importins after nuclear import. Involved in the regulation of onset of chromosome condensation in the S phase. Binds both to the nucleosomes and double-stranded DNA.,CHC1, RCC1-I, SNHG3-RCC1,Cell Biology & Developmental Biology,Cell Cycle,RCC1

---

Molecular Weight: 45 kDa

---

Gene ID: 1104

---

UniProt: [P18754](#)

---

Pathways: [Chromatin Binding](#), [Protein targeting to Nucleus](#)

## Application Details

---

---

Application Notes: WB,1:500 - 1:2000,IHC,1:50 - 1:200

---

Restrictions: For Research Use only

## Handling

---

---

Format: Liquid

---

Buffer: PBS with 0.02 % sodium azide,0.05 % BSA,50 % glycerol, pH 7.3.

---

Preservative: Sodium azide

---

Precaution of Use: This product contains Sodium azide: a POISONOUS AND HAZARDOUS SUBSTANCE which should be handled by trained staff only.

---

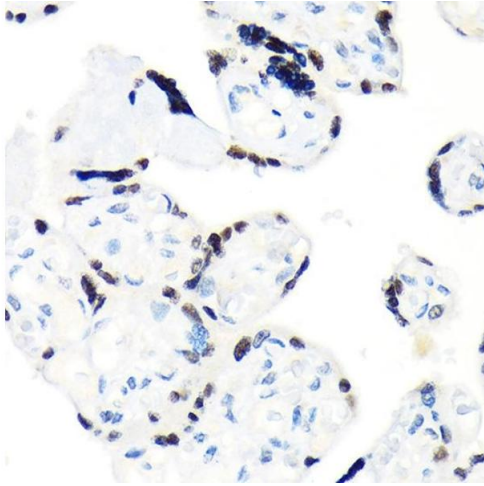
Handling Advice: Avoid freeze / thaw cycles

---

Storage: -20 °C

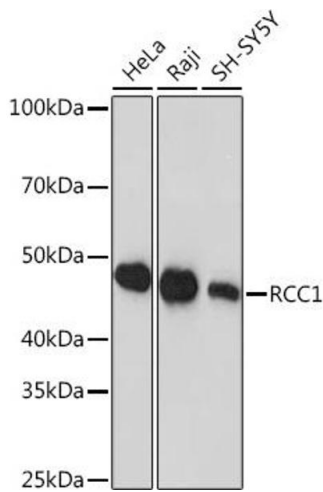
---

Storage Comment: Store at -20°C. Avoid freeze / thaw cycles.



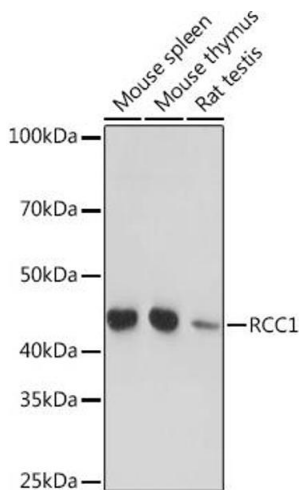
### Immunohistochemistry

**Image 1.** Immunohistochemistry of paraffin-embedded human placenta using RCC1 Rabbit mAb (ABIN1512845, ABIN3021028, ABIN3021029 and ABIN7101332) at dilution of 1:100 (40x lens). Perform microwave antigen retrieval with 10 mM Tris/EDTA buffer pH 9.0 before commencing with IHC staining protocol.



### Western Blotting

**Image 2.** Western blot analysis of extracts of various cell lines, using RCC1 Rabbit mAb (ABIN1512845, ABIN3021028, ABIN3021029 and ABIN7101332) at 1:1000 dilution. Secondary antibody: HRP Goat Anti-Rabbit IgG (H+L) (ABIN1684268 and ABIN3020597) at 1:10000 dilution. Lysates/proteins: 25 µg per lane. Blocking buffer: 3 % nonfat dry milk in TBST. Detection: ECL Basic Kit (RM00020). Exposure time: 10s.



### Western Blotting

**Image 3.** Western blot analysis of extracts of various cell lines, using RCC1 Rabbit mAb (ABIN1512845, ABIN3021028, ABIN3021029 and ABIN7101332) at 1:1000 dilution. Secondary antibody: HRP Goat Anti-Rabbit IgG (H+L) (ABIN1684268 and ABIN3020597) at 1:10000 dilution. Lysates/proteins: 25 µg per lane. Blocking buffer: 3 % nonfat dry milk in TBST. Detection: ECL Basic Kit (RM00020). Exposure time: 60s.