

Datasheet for ABIN7101334  
**anti-CSK antibody**



[Go to Product page](#)

4 Images

### Overview

Quantity:	20 µL
Target:	CSK
Reactivity:	Human
Host:	Rabbit
Clonality:	Monoclonal
Conjugate:	This CSK antibody is un-conjugated
Application:	Western Blotting (WB), Immunohistochemistry (IHC)

### Product Details

Immunogen:	A synthesized peptide derived from human CSK
Isotype:	IgG
Cross-Reactivity:	Human, Mouse, Rat
Characteristics:	Monoclonal Antibodies
Purification:	Affinity purification

### Target Details

Target:	CSK
Alternative Name:	CSK ( <a href="#">CSK Products</a> )
Background:	Non-receptor tyrosine-protein kinase that plays an important role in the regulation of cell growth, differentiation, migration and immune response. Phosphorylates tyrosine residues

## Target Details

---

located in the C-terminal tails of Src-family kinases (SFKs including LCK, SRC, HCK, FYN, LYN, CSK or YES1. Upon tail phosphorylation, Src-family members engage in intramolecular interactions between the phosphotyrosine tail and the SH2 domain that result in an inactive conformation. To inhibit SFKs, CSK is recruited to the plasma membrane via binding to transmembrane proteins or adapter proteins located near the plasma membrane. Suppresses signaling by various surface receptors, including T-cell receptor (TCR and B-cell receptor (BCR by phosphorylating and maintaining inactive several positive effectors such as FYN or LCK.,CSK, tyrosine-protein kinase CSK,B Cell Receptor Signaling Pathway,Immunology & Inflammation,Kinase,Kinase\_Tyrosine kinases,Signal Transduction,CSK

Molecular Weight: 50 kDa

Gene ID: 1445

UniProt: [P41240](#)

Pathways: [TCR Signaling](#), [EGFR Signaling Pathway](#), [Cell-Cell Junction Organization](#), [CXCR4-mediated Signaling Events](#)

## Application Details

---

Application Notes: WB,1:500 - 1:2000,IHC,1:50 - 1:200

Restrictions: For Research Use only

## Handling

---

Format: Liquid

Buffer: PBS with 0.02 % sodium azide,0.05 % BSA,50 % glycerol, pH 7.3.

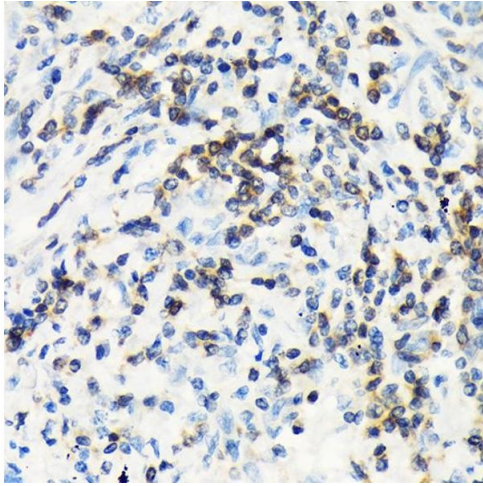
Preservative: Sodium azide

Precaution of Use: This product contains Sodium azide: a POISONOUS AND HAZARDOUS SUBSTANCE which should be handled by trained staff only.

Handling Advice: Avoid freeze / thaw cycles

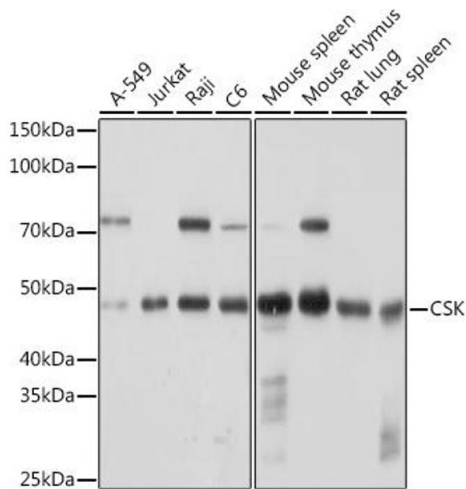
Storage: -20 °C

Storage Comment: Store at -20°C. Avoid freeze / thaw cycles.



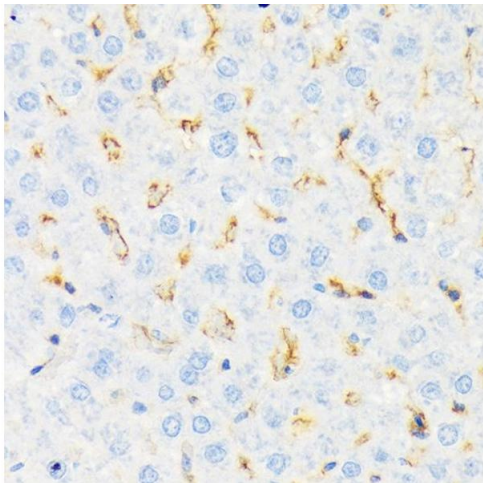
### Immunohistochemistry

**Image 1.** Immunohistochemistry of paraffin-embedded human lung cancer using CSK Rabbit mAb (ABIN1513217, ABIN3021034, ABIN3021035 and ABIN7101334) at dilution of 1:100 (40x lens). Perform microwave antigen retrieval with 10 mM Tris/EDTA buffer pH 9.0 before commencing with IHC staining protocol.



### Western Blotting

**Image 2.** Western blot analysis of extracts of various cell lines, using CSK Rabbit mAb (ABIN1513217, ABIN3021034, ABIN3021035 and ABIN7101334) at 1:1000 dilution. Secondary antibody: HRP Goat Anti-Rabbit IgG (H+L) (ABIN1684268 and ABIN3020597) at 1:10000 dilution. Lysates/proteins: 25 µg per lane. Blocking buffer: 3 % nonfat dry milk in TBST. Detection: ECL Basic Kit (RM00020). Exposure time: 30s.



### Immunohistochemistry

**Image 3.** Immunohistochemistry of paraffin-embedded rat liver using CSK Rabbit mAb (ABIN1513217, ABIN3021034, ABIN3021035 and ABIN7101334) at dilution of 1:100 (40x lens). Perform microwave antigen retrieval with 10 mM Tris/EDTA buffer pH 9.0 before commencing with IHC staining protocol.

Please check the [product details page](#) for more images. Overall 4 images are available for ABIN7101334.