



Datasheet for ABIN7101406

anti-CD21 antibody

5 Images



[Go to Product page](#)

Overview

Quantity:	20 µL
Target:	CD21 (CR2)
Reactivity:	Human
Host:	Rabbit
Clonality:	Monoclonal
Conjugate:	This CD21 antibody is un-conjugated
Application:	Western Blotting (WB), Immunofluorescence (IF)

Product Details

Immunogen:	A synthesized peptide derived from human CR2/CD21
Isotype:	IgG
Cross-Reactivity:	Human, Rat
Characteristics:	Monoclonal Antibodies
Purification:	Affinity purification

Target Details

Target:	CD21 (CR2)
Alternative Name:	CR2 (CR2 Products)
Background:	This gene encodes a membrane protein, which functions as a receptor for Epstein-Barr virus (EBV) binding on B and T lymphocytes. Genetic variations in this gene are associated with

Target Details

susceptibility to systemic lupus erythematosus type 9 (SLEB9). Alternatively spliced transcript variants encoding different isoforms have been found for this gene. [provided by RefSeq, Sep 2009],C3DR, CD21, CR, CVID7, SLEB9,CDs,Immunology & Inflammation,CR2

Molecular Weight: 155 kDa

Gene ID: 1380

UniProt: [P20023](#)

Pathways: [Complement System](#)

Application Details

Application Notes: WB,1:500 - 1:2000,IF,1:50 - 1:200

Restrictions: For Research Use only

Handling

Buffer: PBS with 0.02 % sodium azide,0.05 % BSA,50 % glycerol, pH 7.3.

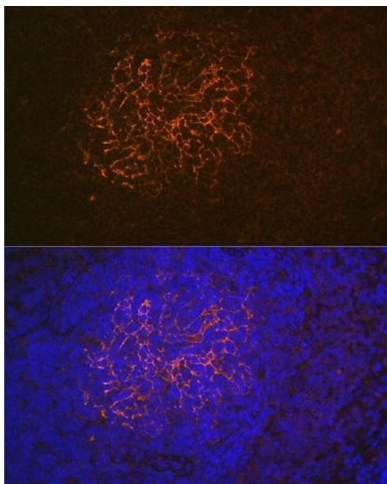
Preservative: Sodium azide

Precaution of Use: This product contains Sodium azide: a POISONOUS AND HAZARDOUS SUBSTANCE which should be handled by trained staff only.

Storage: -20 °C

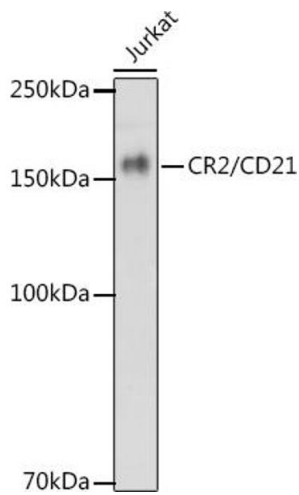
Storage Comment: Store at -20°C. Avoid freeze / thaw cycles.

Images



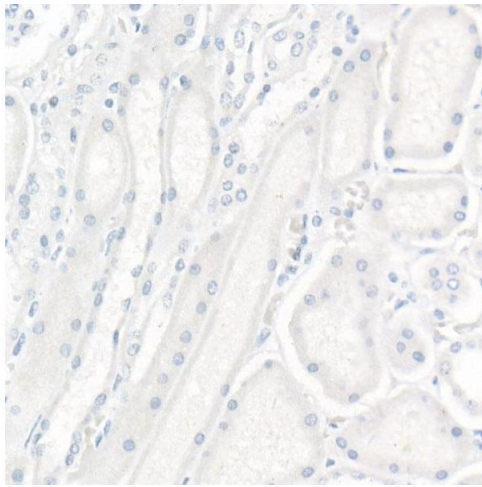
Immunofluorescence

Image 1. Immunofluorescence analysis of rat spleen using CR2/CD21 Rabbit mAb (ABIN1678995, ABIN3015431, ABIN3015432 and ABIN7101406) at dilution of 1:100 (40x lens). Blue: DAPI for nuclear staining.



Western Blotting

Image 2. Western blot analysis of extracts of Jurkat cells, using CR2/CD21 antibody (ABIN1678995, ABIN3015431, ABIN3015432 and ABIN7101406) at 1:1000 dilution. Secondary antibody: HRP Goat Anti-Rabbit IgG (H+L) (ABIN1684268 and ABIN3020597) at 1:10000 dilution. Lysates/proteins: 25 µg per lane. Blocking buffer: 3 % nonfat dry milk in TBST. Detection: ECL Enhanced Kit (RM00021). Exposure time: 180s.



Immunohistochemistry

Image 3. Immunohistochemistry of paraffin-embedded Human kidney (negative control sample) using CR2/CD21 Rabbit mAb (ABIN1678995, ABIN3015431, ABIN3015432 and ABIN7101406) at dilution of 1:200 (40x lens).

Please check the [product details page](#) for more images. Overall 5 images are available for ABIN7101406.