



Datasheet for ABIN7101439  
**anti-ZNF259 antibody**



[Go to Product page](#)

2 Images

Overview

Quantity:	20 µL
Target:	ZNF259 (zfn259)
Reactivity:	Human
Host:	Rabbit
Clonality:	Monoclonal
Conjugate:	This ZNF259 antibody is un-conjugated
Application:	Western Blotting (WB), Immunohistochemistry (IHC)

Product Details

Immunogen:	A synthesized peptide derived from human ZNF259.
Isotype:	IgG
Cross-Reactivity:	Human, Mouse
Characteristics:	Monoclonal Antibodies
Purification:	Affinity purification

Target Details

Target:	ZNF259 (zfn259)
Alternative Name:	ZNF259 ( <a href="#">zfn259 Products</a> )
Background:	The protein encoded by this gene is found in the cytoplasm of quiescent cells but translocates to the nucleolus in proliferating cells. The encoded protein interacts with survival motor neuron

## Target Details

---

protein (SMN1) to enhance pre-mRNA splicing and to induce neuronal differentiation and axonal growth. Defects in this gene or the SMN1 gene can cause spinal muscular atrophy. Two transcript variants encoding different isoforms have been found for this gene.,ZPR1, ZNF259, ZPR1 zinc finger,Epigenetics & Nuclear Signaling,ZNF259

---

Molecular Weight: 51 kDa

---

Gene ID: 8882

---

UniProt: [075312](#)

## Application Details

---

---

Application Notes: WB,1:500 - 1:2000,IHC,1:50 - 1:200

---

Restrictions: For Research Use only

## Handling

---

---

Format: Liquid

---

Buffer: PBS with 0.02 % sodium azide,0.05 % BSA,50 % glycerol, pH 7.3.

---

Preservative: Sodium azide

---

Precaution of Use: This product contains Sodium azide: a POISONOUS AND HAZARDOUS SUBSTANCE which should be handled by trained staff only.

---

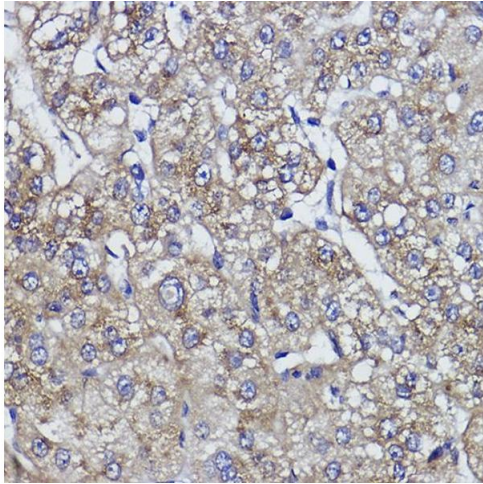
Handling Advice: Avoid freeze / thaw cycles

---

Storage: -20 °C

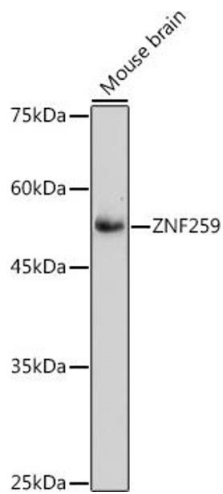
---

Storage Comment: Store at -20°C. Avoid freeze / thaw cycles.



### Immunohistochemistry

**Image 1.** Immunohistochemistry of paraffin-embedded human liver cancer using ZNF259 Rabbit mAb (ABIN1512700, ABIN7101439, ABIN7101440 and ABIN7101441) at dilution of 1:100 (40x lens). Perform high pressure antigen retrieval with 10 mM citrate buffer pH 6.0 before commencing with IHC staining protocol.



### Western Blotting

**Image 2.** Western blot analysis of extracts of Mouse brain, using ZNF259 antibody (ABIN1512700, ABIN7101439, ABIN7101440 and ABIN7101441) at 1:1000 dilution. Secondary antibody: HRP Goat Anti-Rabbit IgG (H+L) (ABIN1684268 and ABIN3020597) at 1:10000 dilution. Lysates/proteins: 25 µg per lane. Blocking buffer: 3 % nonfat dry milk in TBST. Detection: ECL Basic Kit (RM00020). Exposure time: 90s.