



[Go to Product page](#)

Datasheet for ABIN7101461

anti-STK39 antibody

6 Images

Overview

Quantity:	20 µL
Target:	STK39
Reactivity:	Human
Host:	Rabbit
Clonality:	Monoclonal
Conjugate:	This STK39 antibody is un-conjugated
Application:	Western Blotting (WB), Immunohistochemistry (IHC), Immunoprecipitation (IP), Immunofluorescence (IF)

Product Details

Immunogen:	A synthesized peptide derived from human STK39
Isotype:	IgG
Cross-Reactivity:	Human, Mouse, Rat
Characteristics:	Monoclonal Antibodies
Purification:	Affinity purification

Target Details

Target:	STK39
Alternative Name:	STK39 (STK39 Products)
Background:	This gene encodes a serine/threonine kinase that is thought to function in the cellular stress

Target Details

response pathway. The kinase is activated in response to hypotonic stress, leading to phosphorylation of several cation-chloride-coupled cotransporters. The catalytically active kinase specifically activates the p38 MAP kinase pathway, and its interaction with p38 decreases upon cellular stress, suggesting that this kinase may serve as an intermediate in the response to cellular stress. [provided by RefSeq, Jul 2008],DCHT, PASK, SPAK,Cancer,Endocrine & Metabolism,Kinase,Signal Transduction,STK39

Molecular Weight: 68 kDa

Gene ID: 27347

UniProt: [Q9UEW8](#)

Application Details

Application Notes: WB,1:500 - 1:2000,IHC,1:50 - 1:200,IF,1:50 - 1:200,IP,1:50 - 1:200

Restrictions: For Research Use only

Handling

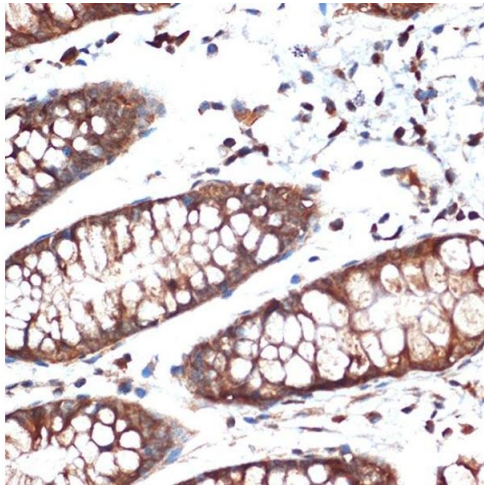
Buffer: PBS with 0.02 % sodium azide,0.05 % BSA,50 % glycerol, pH 7.3.

Preservative: Sodium azide

Precaution of Use: This product contains Sodium azide: a POISONOUS AND HAZARDOUS SUBSTANCE which should be handled by trained staff only.

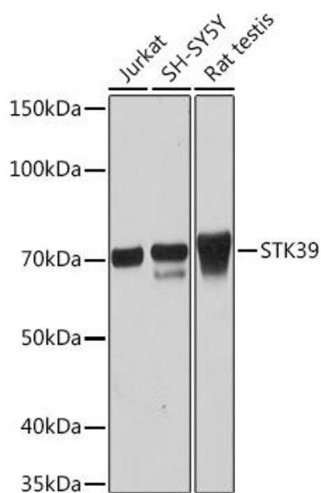
Storage: -20 °C

Storage Comment: Store at -20°C. Avoid freeze / thaw cycles.



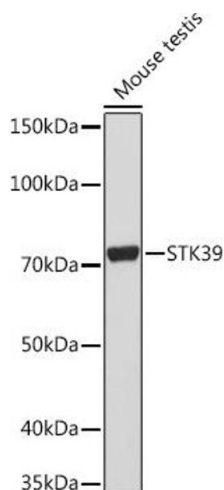
Immunohistochemistry

Image 1. Immunohistochemistry of paraffin-embedded human colon using STK39 Rabbit mAb (ABIN1682890, ABIN3015922, ABIN3015923 and ABIN7101461) at dilution of 1:100 (40x lens). Perform microwave antigen retrieval with 10 mM Tris/EDTA buffer pH 9.0 before commencing with IHC staining protocol.



Western Blotting

Image 2. Western blot analysis of extracts of various cell lines, using STK39 Rabbit mAb (ABIN1682890, ABIN3015922, ABIN3015923 and ABIN7101461) at 1:1000 dilution. Secondary antibody: HRP Goat Anti-Rabbit IgG (H+L) (ABIN1684268 and ABIN3020597) at 1:10000 dilution. Lysates/proteins: 25 µg per lane. Blocking buffer: 3 % nonfat dry milk in TBST. Detection: ECL Basic Kit (RM00020). Exposure time: 10s.



Western Blotting

Image 3. Western blot analysis of extracts of Mouse testis, using STK39 Rabbit mAb (ABIN1682890, ABIN3015922, ABIN3015923 and ABIN7101461) at 1:1000 dilution. Secondary antibody: HRP Goat Anti-Rabbit IgG (H+L) (ABIN1684268 and ABIN3020597) at 1:10000 dilution. Lysates/proteins: 25 µg per lane. Blocking buffer: 3 % nonfat dry milk in TBST. Detection: ECL Basic Kit (RM00020). Exposure time: 90s.

Please check the [product details page](#) for more images. Overall 6 images are available for ABIN7101461.