



[Go to Product page](#)

Datasheet for ABIN7101462

## anti-SMURF2 antibody

### 4 Images

#### Overview

Quantity:	20 µL
Target:	SMURF2
Reactivity:	Human
Host:	Rabbit
Clonality:	Monoclonal
Conjugate:	This SMURF2 antibody is un-conjugated
Application:	Western Blotting (WB), Immunohistochemistry (IHC), Immunofluorescence (IF), Immunoprecipitation (IP)

#### Product Details

Immunogen:	A synthesized peptide derived from human SMURF2
Isotype:	IgG
Cross-Reactivity:	Human, Mouse
Characteristics:	Monoclonal Antibodies
Purification:	Affinity purification

#### Target Details

Target:	SMURF2
Alternative Name:	SMURF2 ( <a href="#">SMURF2 Products</a> )
Background:	E3 ubiquitin-protein ligase which accepts ubiquitin from an E2 ubiquitin-conjugating enzyme in

## Target Details

---

the form of a thioester and then directly transfers the ubiquitin to targeted substrates. Interacts with SMAD7 to trigger SMAD7-mediated transforming growth factor beta/TGF-beta receptor ubiquitin-dependent degradation, thereby downregulating TGF-beta signaling. In addition, interaction with SMAD7 activates autocatalytic degradation, which is prevented by interaction with AIMP1. Also forms a stable complex with TGF-beta receptor-mediated phosphorylated SMAD1, SMAD2 and SMAD3, and targets SMAD1 and SMAD2 for ubiquitination and proteasome-mediated degradation. SMAD2 may recruit substrates, such as SNON, for ubiquitin-dependent degradation. Negatively regulates TGFβ1-induced epithelial-mesenchymal transition and myofibroblast differentiation.,SMURF2, E3 ubiquitin-protein ligase SMURF2,Cell Biology & Developmental Biology,Endocrine & Metabolism,Epigenetics & Nuclear Signaling,Immunology & Inflammation,Mitochondrial metabolism,Signal Transduction,Stem Cells,TGF-β-Smad Signaling Pathway,Ubiquitin,Ubiquitin-Ubiquitin-Proteasome Signaling Pathway,SMURF2

---

Molecular Weight: 86 kDa

---

Gene ID: 64750

---

UniProt: [Q9HAU4](#)

## Application Details

---

Application Notes: WB,1:500 - 1:2000,IHC,1:50 - 1:200,IF,1:50 - 1:200,IP,1:50 - 1:200

---

Restrictions: For Research Use only

## Handling

---

Buffer: PBS with 0.02 % sodium azide,0.05 % BSA,50 % glycerol, pH 7.3.

---

Preservative: Sodium azide

---

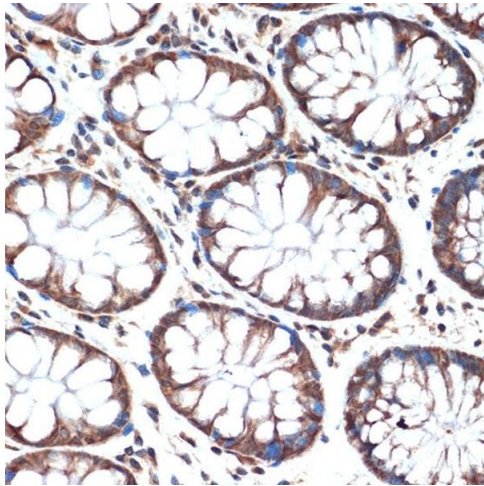
Precaution of Use: This product contains Sodium azide: a POISONOUS AND HAZARDOUS SUBSTANCE which should be handled by trained staff only.

---

Storage: -20 °C

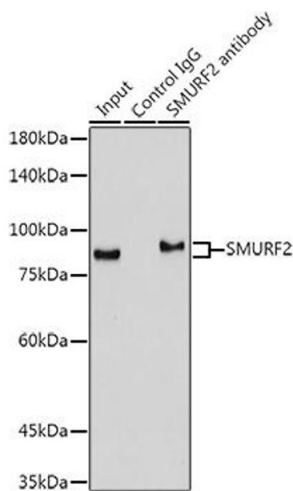
---

Storage Comment: Store at -20°C. Avoid freeze / thaw cycles.



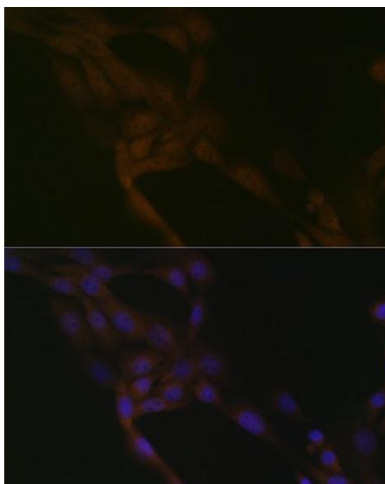
### Immunohistochemistry

**Image 1.** Immunohistochemistry of paraffin-embedded human colon using SMURF2 Rabbit mAb (ABIN1680578, ABIN3015927, ABIN3015928 and ABIN7101462) at dilution of 1:100 (40x lens). Perform microwave antigen retrieval with 10 mM Tris/EDTA buffer pH 9.0 before commencing with IHC staining protocol.



### Immunoprecipitation

**Image 2.** Immunoprecipitation analysis of 300 µg extracts of Mouse lung cells using 3 µg SMURF2 antibody (ABIN1680578, ABIN3015927, ABIN3015928 and ABIN7101462). Western blot was performed from the immunoprecipitate using SMURF2 antibody (ABIN1680578, ABIN3015927, ABIN3015928 and ABIN7101462) at a dilution of 1:1000.



### Immunofluorescence

**Image 3.** Immunofluorescence analysis of NIH-3T3 cells using SMURF2 Rabbit mAb (ABIN1680578, ABIN3015927, ABIN3015928 and ABIN7101462) at dilution of 1:100 (40x lens). Blue: DAPI for nuclear staining.

Please check the [product details page](#) for more images. Overall 4 images are available for ABIN7101462.