



Datasheet for ABIN7101465
anti-HSPA14 antibody



[Go to Product page](#)

3 Images

Overview

Quantity:	20 µL
Target:	HSPA14
Reactivity:	Human
Host:	Rabbit
Clonality:	Monoclonal
Conjugate:	This HSPA14 antibody is un-conjugated
Application:	Western Blotting (WB), Immunohistochemistry (IHC), Immunofluorescence (IF)

Product Details

Immunogen:	A synthesized peptide derived from human HSPA14
Isotype:	IgG
Cross-Reactivity:	Human, Mouse
Characteristics:	Monoclonal Antibodies
Purification:	Affinity purification

Target Details

Target:	HSPA14
Alternative Name:	HSPA14 (HSPA14 Products)
Background:	Component of the ribosome-associated complex (RAC, a complex involved in folding or maintaining nascent polypeptides in a folding-competent state. In the RAC complex, binds to

Target Details

the nascent polypeptide chain, while DNAJC2 stimulates its ATPase activity.,HSP70-4,
HSP70L1,Signal Transduction,HSPA14

Molecular Weight: 55 kDa

Gene ID: 51182

UniProt: [Q0VDF9](#)

Application Details

Application Notes: WB,1:500 - 1:2000,IHC,1:50 - 1:200,IF,1:50 - 1:200

Restrictions: For Research Use only

Handling

Buffer: PBS with 0.02 % sodium azide,0.05 % BSA,50 % glycerol, pH 7.3.

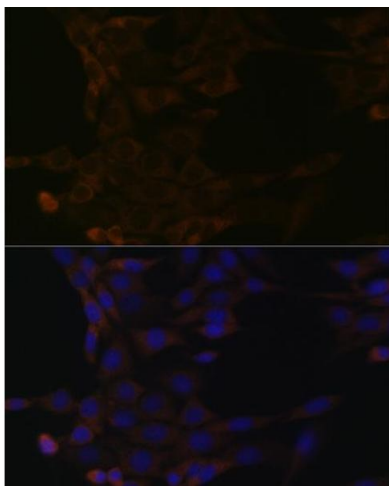
Preservative: Sodium azide

Precaution of Use: This product contains Sodium azide: a POISONOUS AND HAZARDOUS SUBSTANCE which should be handled by trained staff only.

Storage: -20 °C

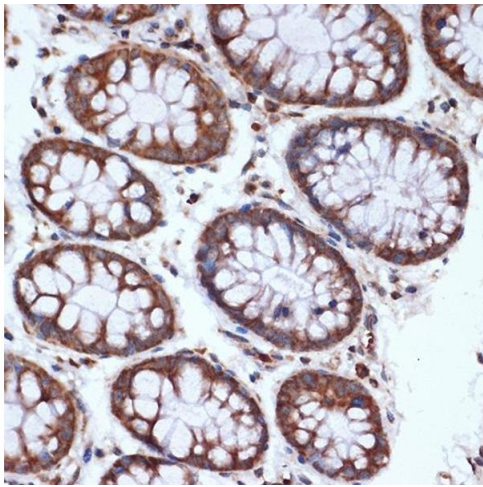
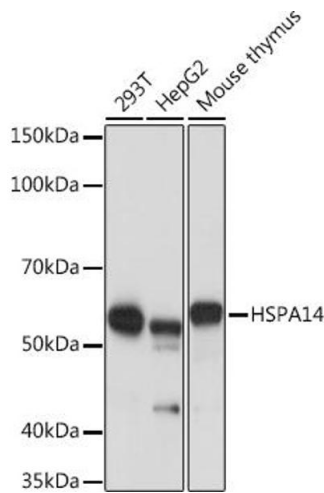
Storage Comment: Store at -20°C. Avoid freeze / thaw cycles.

Images



Immunofluorescence

Image 1. Immunofluorescence analysis of NIH-3T3 cells using HSP Rabbit mAb (ABIN1679173, ABIN3015940, ABIN3015941 and ABIN7101465) at dilution of 1:100 (40x lens). Blue: DAPI for nuclear staining.



Western Blotting

Image 2. Western blot analysis of extracts of various cell lines, using HSP Rabbit mAb (ABIN1679173, ABIN3015940, ABIN3015941 and ABIN7101465) at 1:1000 dilution. Secondary antibody: HRP Goat Anti-Rabbit IgG (H+L) (ABIN1684268 and ABIN3020597) at 1:10000 dilution. Lysates/proteins: 25 µg per lane. Blocking buffer: 3 % nonfat dry milk in TBST. Detection: ECL Basic Kit (RM00020). Exposure time: 1s.

Immunohistochemistry

Image 3. Immunohistochemistry of paraffin-embedded human colon using HSP Rabbit mAb (ABIN1679173, ABIN3015940, ABIN3015941 and ABIN7101465) at dilution of 1:100 (40x lens). Perform microwave antigen retrieval with 10 mM Tris/EDTA buffer pH 9.0 before commencing with IHC staining protocol.