



[Go to Product page](#)

Datasheet for ABIN7101480

anti-Keratin 2 antibody

5 Images

Overview

Quantity:	20 µL
Target:	Keratin 2 (KRT2)
Reactivity:	Human
Host:	Rabbit
Clonality:	Monoclonal
Conjugate:	This Keratin 2 antibody is un-conjugated
Application:	Western Blotting (WB), Immunohistochemistry (IHC), Immunofluorescence (IF)

Product Details

Immunogen:	A synthesized peptide derived from human Cytokeratin 2e (KRT2)
Isotype:	IgG
Cross-Reactivity:	Human, Mouse, Rat
Characteristics:	Monoclonal Antibodies
Purification:	Affinity purification

Target Details

Target:	Keratin 2 (KRT2)
Alternative Name:	KRT2 (KRT2 Products)
Background:	The protein encoded by this gene is a member of the keratin gene family. The type II cytokeratins consist of basic or neutral proteins which are arranged in pairs of heterotypic

Target Details

keratin chains coexpressed during differentiation of simple and stratified epithelial tissues. This type II cytokeratin is expressed largely in the upper spinous layer of epidermal keratinocytes and mutations in this gene have been associated with bullous congenital ichthyosiform erythroderma. The type II cytokeratins are clustered in a region of chromosome 12q12-q13. [provided by RefSeq, Jul 2008],CK-2e, K2e, KRT2A, KRT2E, KRTE,Cell Biology & Developmental Biology,Cytoskeleton,Extracellular Matrix,Extracellular Matrix_Cytokeratin,Extracellular Matrix_Keratin,Signal Transduction,KRT2

Molecular Weight: 65 kDa

Gene ID: 3849

UniProt: [P35908](#)

Application Details

Application Notes: WB,1:500 - 1:2000,IHC,1:50 - 1:200,IF,1:50 - 1:200

Restrictions: For Research Use only

Handling

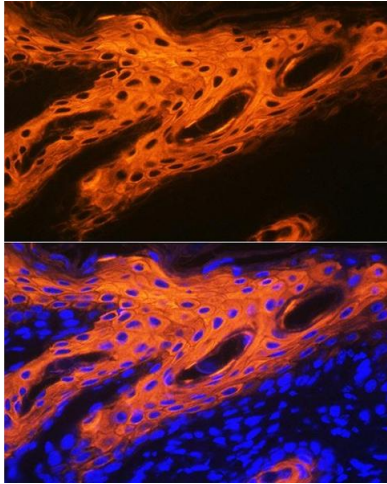
Buffer: PBS with 0.02 % sodium azide,0.05 % BSA,50 % glycerol, pH 7.3.

Preservative: Sodium azide

Precaution of Use: This product contains Sodium azide: a POISONOUS AND HAZARDOUS SUBSTANCE which should be handled by trained staff only.

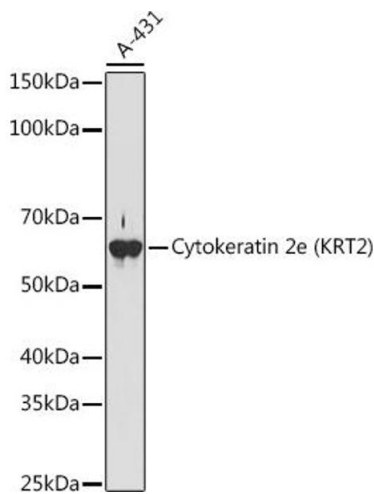
Storage: -20 °C

Storage Comment: Store at -20°C. Avoid freeze / thaw cycles.



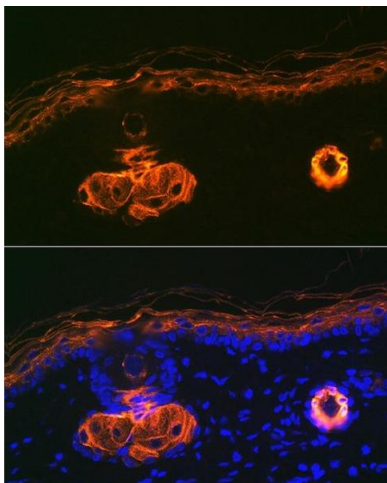
Immunofluorescence

Image 1. Immunofluorescence analysis of human skin using Cytokeratin 2e (KRT2) Rabbit mAb (ABIN1680763, ABIN3016322, ABIN3016323 and ABIN7101480) at dilution of 1:100 (40x lens). Blue: DAPI for nuclear staining.



Western Blotting

Image 2. Western blot analysis of extracts of A-431 cells, using Cytokeratin 2e (KRT2) antibody (ABIN1680763, ABIN3016322, ABIN3016323 and ABIN7101480) at 1:1000 dilution. Secondary antibody: HRP Goat Anti-Rabbit IgG (H+L) (ABIN1684268 and ABIN3020597) at 1:10000 dilution. Lysates/proteins: 25 µg per lane. Blocking buffer: 3 % nonfat dry milk in TBST. Detection: ECL Basic Kit (RM00020). Exposure time: 180s.



Immunofluorescence

Image 3. Immunofluorescence analysis of rat skin using Cytokeratin 2e (KRT2) Rabbit mAb (ABIN1680763, ABIN3016322, ABIN3016323 and ABIN7101480) at dilution of 1:100 (40x lens). Blue: DAPI for nuclear staining.

Please check the [product details page](#) for more images. Overall 5 images are available for ABIN7101480.