

Datasheet for ABIN7101507

## anti-IRF6 antibody

### 5 Images



[Go to Product page](#)

### Overview

|              |  |
|--------------|--|
| Quantity:    | 20 µL  |
| Target:      | IRF6   |
| Reactivity:  | Human  |
| Host:        | Rabbit   |
| Clonality:   | Monoclonal   |
| Conjugate:   | This IRF6 antibody is un-conjugated                                      |
| Application: | Western Blotting (WB), Immunofluorescence (IF), Immunoprecipitation (IP) |

### Product Details

|                   |   |
|-------------------|---|
| Immunogen:        | A synthesized peptide derived from human IRF6 |
| Isotype:          | IgG   |
| Cross-Reactivity: | Human, Mouse, Rat                             |
| Characteristics:  | Monoclonal Antibodies                         |
| Purification:     | Affinity purification                         |

### Target Details

|                   |   |
|-------------------|---|
| Target:           | IRF6  |
| Alternative Name: | IRF6 ( <a href="#">IRF6 Products</a> )  |
| Background:       | This gene encodes a member of the interferon regulatory transcription factor (IRF) family. Family members share a highly-conserved N-terminal helix-turn-helix DNA-binding domain and |

## Target Details

---

a less conserved C-terminal protein-binding domain. The encoded protein may be a transcriptional activator. Mutations in this gene can cause van der Woude syndrome and popliteal pterygium syndrome. Mutations in this gene are also associated with non-syndromic orofacial cleft type 6. Alternate splicing results in multiple transcript variants.[provided by RefSeq, May 2011],LPS, OFC6, PIT, PPS, PPS1, VWS, VWS1,Cell Intrinsic Innate Immunity Signaling Pathway,Cytokines,Cytokines\_Interferons,Embryonic Stem Cells,Epigenetics & Nuclear Signaling,Immunology & Inflammation,Stem Cells,Transcription Factors,IRF6

---

Molecular Weight: 53 kDa

---

Gene ID: 3664

---

UniProt: [014896](#)

## Application Details

---

---

Application Notes: WB,1:500 - 1:2000,IF,1:50 - 1:200,IP,1:50 - 1:200

---

Restrictions: For Research Use only

## Handling

---

---

Buffer: PBS with 0.02 % sodium azide,0.05 % BSA,50 % glycerol, pH 7.3.

---

Preservative: Sodium azide

---

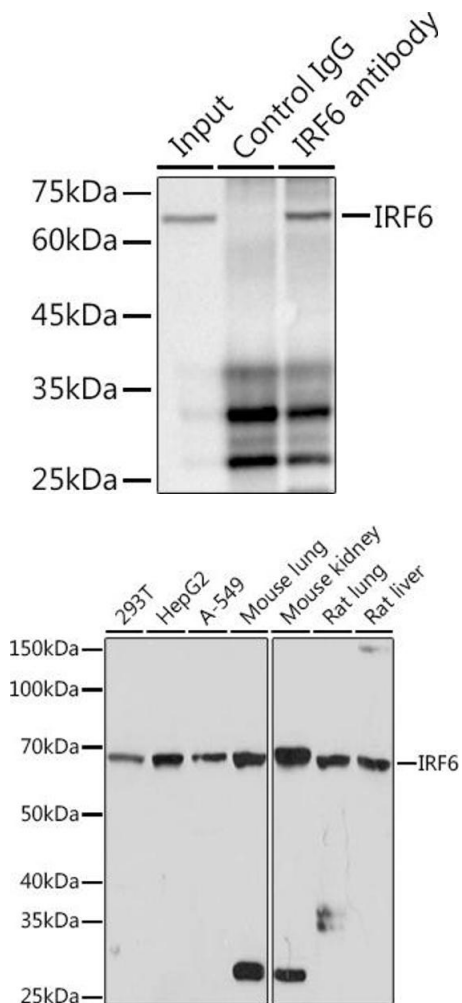
Precaution of Use: This product contains Sodium azide: a POISONOUS AND HAZARDOUS SUBSTANCE which should be handled by trained staff only.

---

Storage: -20 °C

---

Storage Comment: Store at -20°C. Avoid freeze / thaw cycles.

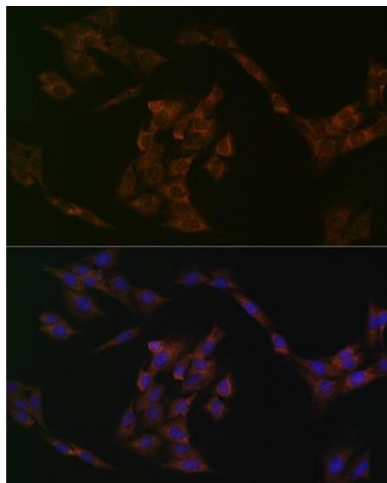


### Immunoprecipitation

**Image 1.** Immunoprecipitation analysis of 300 µg extracts of HepG2 cells using 3 µg IRF6 antibody (ABIN1680921, ABIN3017588, ABIN3017589 and ABIN7101507). Western blot was performed from the immunoprecipitate using IRF6 antibody (ABIN1680921, ABIN3017588, ABIN3017589 and ABIN7101507) at a dilution of 1:1000.

### Western Blotting

**Image 2.** Western blot analysis of extracts of various cell lines, using IRF6 Rabbit mAb (ABIN1680921, ABIN3017588, ABIN3017589 and ABIN7101507) at 1:1000 dilution. Secondary antibody: HRP Goat Anti-Rabbit IgG (H+L) (ABIN1684268 and ABIN3020597) at 1:10000 dilution. Lysates/proteins: 25 µg per lane. Blocking buffer: 3 % nonfat dry milk in TBST. Detection: ECL Basic Kit (RM00020). Exposure time: 3 min.



### Immunofluorescence

**Image 3.** Immunofluorescence analysis of C6 cells using IRF6 Rabbit mAb (ABIN1680921, ABIN3017588, ABIN3017589 and ABIN7101507) at dilution of 1:100 (40x lens). Blue: DAPI for nuclear staining.

Please check the [product details page](#) for more images. Overall 5 images are available for ABIN7101507.