



Datasheet for ABIN7101508

anti-CLPP antibody



[Go to Product page](#)

4 Images

Overview

Quantity:	20 µL
Target:	CLPP
Reactivity:	Human
Host:	Rabbit
Clonality:	Monoclonal
Conjugate:	This CLPP antibody is un-conjugated
Application:	Western Blotting (WB), Immunohistochemistry (IHC), Immunofluorescence (IF)

Product Details

Immunogen:	A synthesized peptide derived from human CLPP
Isotype:	IgG
Cross-Reactivity:	Human, Mouse, Rat
Characteristics:	Monoclonal Antibodies
Purification:	Affinity purification

Target Details

Target:	CLPP
Alternative Name:	CLPP (CLPP Products)
Background:	The protein encoded by this gene belongs to the peptidase family S14 and hydrolyzes proteins into small peptides in the presence of ATP and magnesium. The protein is transported into

Target Details

mitochondrial matrix and is associated with the inner mitochondrial membrane. [provided by RefSeq, Jul 2008],DFNB81, PRLTS3,Cancer,Endocrine & Metabolism,Mitochondrial metabolism,Mitochondrial metabolism_Mitochondrial markers,Signal Transduction,CLPP

Molecular Weight: 26 kDa

Gene ID: 8192

UniProt: [Q16740](#)

Application Details

Application Notes: WB,1:500 - 1:2000,IHC,1:50 - 1:200,IF,1:50 - 1:200

Restrictions: For Research Use only

Handling

Buffer: PBS with 0.02 % sodium azide,0.05 % BSA,50 % glycerol, pH 7.3.

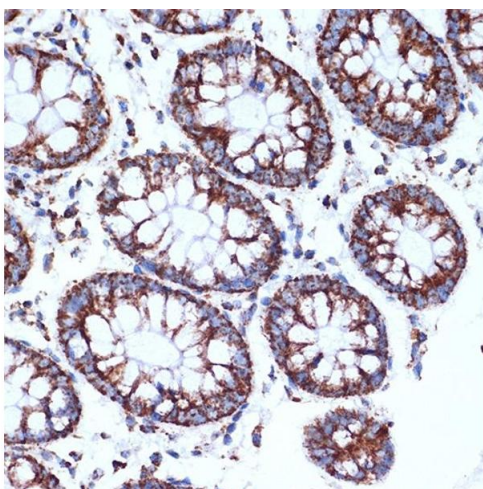
Preservative: Sodium azide

Precaution of Use: This product contains Sodium azide: a POISONOUS AND HAZARDOUS SUBSTANCE which should be handled by trained staff only.

Storage: -20 °C

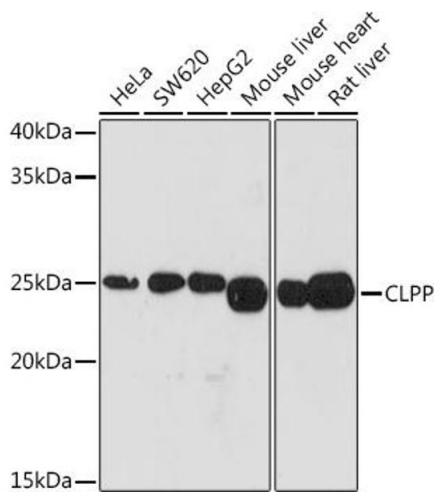
Storage Comment: Store at -20°C. Avoid freeze / thaw cycles.

Images



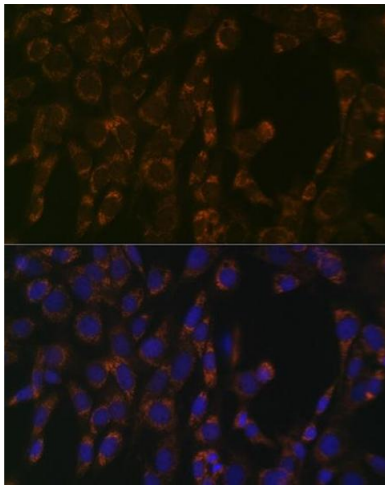
Immunohistochemistry

Image 1. Immunohistochemistry of paraffin-embedded human colon using CLPP Rabbit mAb (ABIN1682296, ABIN3017596, ABIN3017597 and ABIN7101508) at dilution of 1:100 (40x lens). Perform microwave antigen retrieval with 10 mM Tris/EDTA buffer pH 9.0 before commencing with IHC staining protocol.



Western Blotting

Image 2. Western blot analysis of extracts of various cell lines, using CLPP Rabbit mAb (ABIN1682296, ABIN3017596, ABIN3017597 and ABIN7101508) at 1:1000 dilution. Secondary antibody: HRP Goat Anti-Rabbit IgG (H+L) (ABIN1684268 and ABIN3020597) at 1:10000 dilution. Lysates/proteins: 25 µg per lane. Blocking buffer: 3 % nonfat dry milk in TBST. Detection: ECL Basic Kit (RM00020). Exposure time: 3 min.



Immunofluorescence

Image 3. Immunofluorescence analysis of NIH-3T3 cells using CLPP Rabbit mAb (ABIN1682296, ABIN3017596, ABIN3017597 and ABIN7101508) at dilution of 1:100 (40x lens). Blue: DAPI for nuclear staining.

Please check the [product details page](#) for more images. Overall 4 images are available for ABIN7101508.