



[Go to Product page](#)

Datasheet for ABIN7101509

anti-EGR2 antibody

2 Images

Overview

Quantity:	20 µL
Target:	EGR2
Reactivity:	Human
Host:	Rabbit
Clonality:	Monoclonal
Conjugate:	This EGR2 antibody is un-conjugated
Application:	Western Blotting (WB), Immunoprecipitation (IP)

Product Details

Immunogen:	A synthesized peptide derived from human EGR2
Isotype:	IgG
Cross-Reactivity:	Human, Mouse, Rat
Characteristics:	Monoclonal Antibodies
Purification:	Affinity purification

Target Details

Target:	EGR2
Alternative Name:	EGR2 (EGR2 Products)
Background:	The protein encoded by this gene is a transcription factor with three tandem C2H2-type zinc fingers. Defects in this gene are associated with Charcot-Marie-Tooth disease type 1D

Target Details

(CMT1D), Charcot-Marie-Tooth disease type 4E (CMT4E), and with Dejerine-Sottas syndrome (DSS). Multiple transcript variants encoding two different isoforms have been found for this gene. [provided by RefSeq, Oct 2008],AT591, CMT1D, CMT4E, KROX20,Epigenetics & Nuclear Signaling,Neurodegenerative Diseases,Neuroscience,Transcription Factors,EGR2

Molecular Weight: 53 kDa

Gene ID: 1959

UniProt: [P11161](#)

Application Details

Application Notes: WB,1:500 - 1:2000,IP,1:50 - 1:200

Restrictions: For Research Use only

Handling

Buffer: PBS with 0.02 % sodium azide,0.05 % BSA,50 % glycerol, pH 7.3.

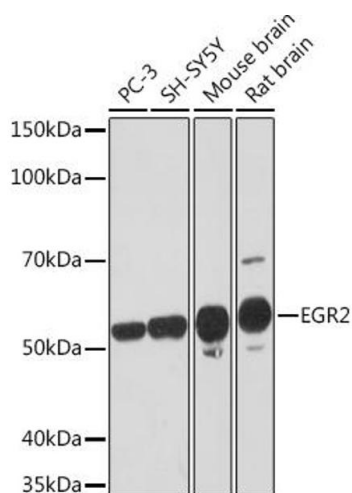
Preservative: Sodium azide

Precaution of Use: This product contains Sodium azide: a POISONOUS AND HAZARDOUS SUBSTANCE which should be handled by trained staff only.

Storage: -20 °C

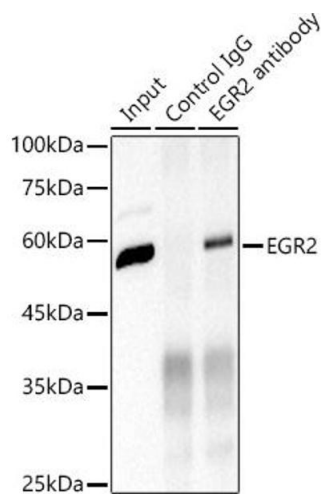
Storage Comment: Store at -20°C. Avoid freeze / thaw cycles.

Images



Western Blotting

Image 1. Western blot analysis of extracts of various cell lines, using EGR2 Rabbit mAb (ABIN1682321, ABIN7101509, ABIN7101510 and ABIN7101511) at 1:1000 dilution. Secondary antibody: HRP Goat Anti-Rabbit IgG (H+L) (ABIN1684268 and ABIN3020597) at 1:10000 dilution. Lysates/proteins: 25 µg per lane. Blocking buffer: 3 % nonfat dry milk in TBST. Detection: ECL Basic Kit (RM00020). Exposure time: 3 min.



Immunoprecipitation

Image 2. Immunoprecipitation analysis of 600 μ g extracts of Mouse brain cells using 3 μ g EGR2 antibody (ABIN1682321, ABIN7101509, ABIN7101510 and ABIN7101511). Western blot was performed from the immunoprecipitate using EGR2 antibody (ABIN1682321, ABIN7101509, ABIN7101510 and ABIN7101511) at a dilution of 1:500.