



[Go to Product page](#)

Datasheet for ABIN7101513

anti-WFDC2 antibody

3 Images

Overview

Quantity:	20 µL
Target:	WFDC2
Reactivity:	Human
Host:	Rabbit
Clonality:	Monoclonal
Conjugate:	This WFDC2 antibody is un-conjugated
Application:	Western Blotting (WB), Immunofluorescence (IF)

Product Details

Immunogen:	A synthesized peptide derived from human HE4/WFDC2
Isotype:	IgG
Cross-Reactivity:	Human, Mouse
Characteristics:	Monoclonal Antibodies
Purification:	Affinity purification

Target Details

Target:	WFDC2
Alternative Name:	WFDC2 (WFDC2 Products)
Background:	This gene encodes a protein that is a member of the WFDC domain family. The WFDC domain, or WAP Signature motif, contains eight cysteines forming four disulfide bonds at the core of the

Target Details

protein, and functions as a protease inhibitor in many family members. This gene is expressed in pulmonary epithelial cells, and was also found to be expressed in some ovarian cancers. The encoded protein is a small secretory protein, which may be involved in sperm maturation. [provided by RefSeq, Jul 2008],EDDM4, HE4, WAP5, dJ461P17.6,WFDC2

Molecular Weight: 23 kDa

Gene ID: 10406

UniProt: [Q14508](#)

Application Details

Application Notes: WB,1:500 - 1:2000,IF,1:50 - 1:200

Restrictions: For Research Use only

Handling

Buffer: PBS with 0.02 % sodium azide,0.05 % BSA,50 % glycerol, pH 7.3.

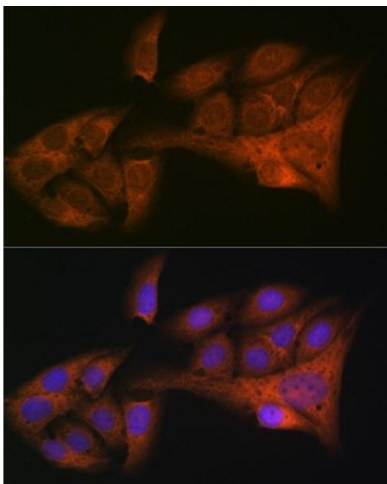
Preservative: Sodium azide

Precaution of Use: This product contains Sodium azide: a POISONOUS AND HAZARDOUS SUBSTANCE which should be handled by trained staff only.

Storage: -20 °C

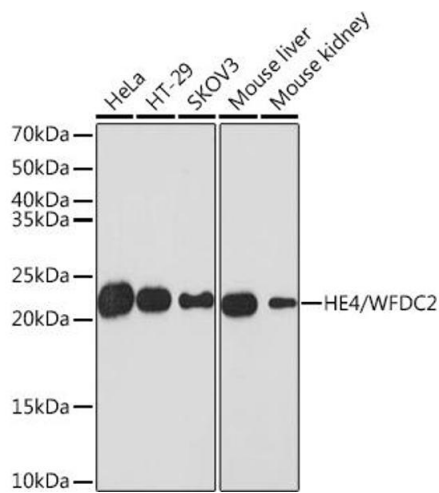
Storage Comment: Store at -20°C. Avoid freeze / thaw cycles.

Images



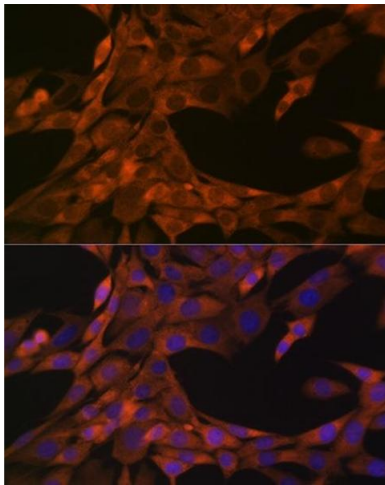
Immunofluorescence

Image 1. Immunofluorescence analysis of U-2 OS cells using HE4/WFDC2 Rabbit mAb (ABIN1682653, ABIN3017632, ABIN3017633 and ABIN7101513) at dilution of 1:100 (40x lens). Blue: DAPI for nuclear staining.



Western Blotting

Image 2. Western blot analysis of extracts of various cell lines, using HE4/WFDC2 Rabbit mAb (ABIN1682653, ABIN3017632, ABIN3017633 and ABIN7101513) at 1:1000 dilution. Secondary antibody: HRP Goat Anti-Rabbit IgG (H+L) (ABIN1684268 and ABIN3020597) at 1:10000 dilution. Lysates/proteins: 25 µg per lane. Blocking buffer: 3 % nonfat dry milk in TBST. Detection: ECL Basic Kit (RM00020). Exposure time: 3 min.



Immunofluorescence

Image 3. Immunofluorescence analysis of NIH-3T3 cells using HE4/WFDC2 Rabbit mAb (ABIN1682653, ABIN3017632, ABIN3017633 and ABIN7101513) at dilution of 1:100 (40x lens). Blue: DAPI for nuclear staining.