



[Go to Product page](#)

Datasheet for ABIN7101514  
**anti-NKX2-1 antibody**

7 Images

Overview

Quantity:	20 µL
Target:	NKX2-1
Reactivity:	Human
Host:	Rabbit
Clonality:	Monoclonal
Conjugate:	This NKX2-1 antibody is un-conjugated
Application:	Western Blotting (WB), Immunofluorescence (IF), Immunohistochemistry (IHC)

Product Details

Immunogen:	A synthesized peptide derived from human TTF1
Isotype:	IgG
Cross-Reactivity:	Human, Mouse, Rat
Characteristics:	Monoclonal Antibodies
Purification:	Affinity purification

Target Details

Target:	NKX2-1
Alternative Name:	NKX2-1 ( <a href="#">NKX2-1 Products</a> )
Background:	This gene encodes a protein initially identified as a thyroid-specific transcription factor. The encoded protein binds to the thyroglobulin promoter and regulates the expression of thyroid-

## Target Details

---

specific genes but has also been shown to regulate the expression of genes involved in morphogenesis. Mutations and deletions in this gene are associated with benign hereditary chorea, choreoathetosis, congenital hypothyroidism, and neonatal respiratory distress, and may be associated with thyroid cancer. Multiple transcript variants encoding different isoforms have been found for this gene. This gene shares the symbol/alias 'TTF1' with another gene, transcription termination factor 1, which plays a role in ribosomal gene transcription. [provided by RefSeq, Feb 2014],BCH, BHC, NK-2, NKX2.1, NKX2A, NMTC1, T/EBP, TEBP, TITF1, TTF-1, TTF1,Epigenetics & Nuclear Signaling,Transcription Factors,NKX2-1

---

Molecular Weight: 39 kDa

---

Gene ID: 7080

---

UniProt: [P43699](#)

---

Pathways: [Intracellular Steroid Hormone Receptor Signaling Pathway](#), [Regulation of Systemic Arterial Blood Pressure by Hormones](#), [Cellular Glucan Metabolic Process](#), [Feeding Behaviour](#)

## Application Details

---

---

Application Notes: WB,1:500 - 1:2000,IHC,1:50 - 1:200,IF,1:50 - 1:200

---

Restrictions: For Research Use only

## Handling

---

---

Buffer: PBS with 0.02 % sodium azide,0.05 % BSA,50 % glycerol, pH 7.3.

---

Preservative: Sodium azide

---

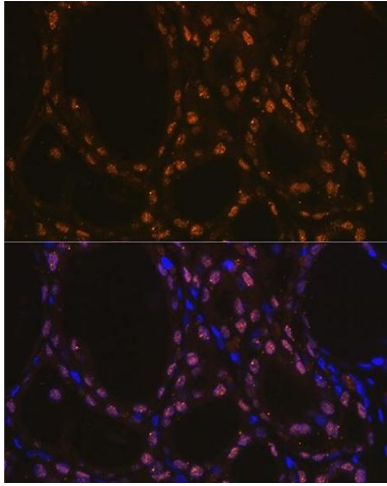
Precaution of Use: This product contains Sodium azide: a POISONOUS AND HAZARDOUS SUBSTANCE which should be handled by trained staff only.

---

Storage: -20 °C

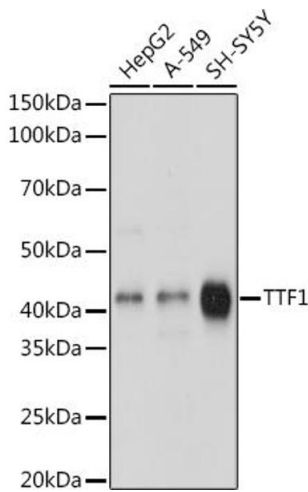
---

Storage Comment: Store at -20°C. Avoid freeze / thaw cycles.



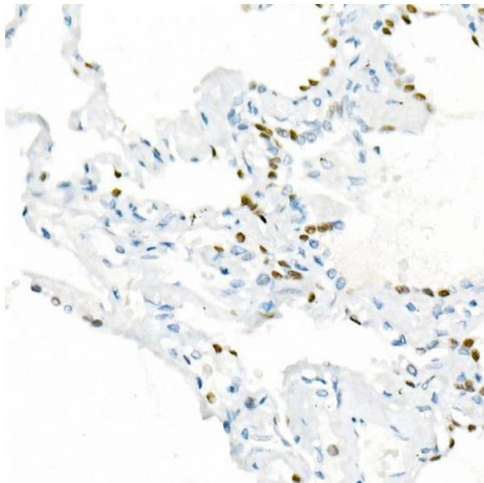
### Immunofluorescence

**Image 1.** Immunofluorescence analysis of rat thyroid using TTF1 Rabbit mAb (ABIN1679475, ABIN3017648, ABIN3017649 and ABIN7101514) at dilution of 1:100 (40x lens). Blue: DAPI for nuclear staining.



### Western Blotting

**Image 2.** Western blot analysis of extracts of various cell lines, using TTF1 antibody (ABIN1679475, ABIN3017648, ABIN3017649 and ABIN7101514) at 1:1000 dilution. Secondary antibody: HRP Goat Anti-Rabbit IgG (H+L) (ABIN1684268 and ABIN3020597) at 1:10000 dilution. Lysates/proteins: 25 µg per lane. Blocking buffer: 3 % nonfat dry milk in TBST. Detection: ECL Basic Kit (RM00020). Exposure time: 1s.



### Immunohistochemistry

**Image 3.** Immunohistochemistry of paraffin-embedded Human lung using TTF1 antibody (ABIN1679475, ABIN3017648, ABIN3017649 and ABIN7101514) at dilution of 1:1000 (40x lens). Perform high pressure antigen retrieval with 10 mM citrate buffer pH 6.0 before commencing with IHC staining protocol.

Please check the [product details page](#) for more images. Overall 7 images are available for ABIN7101514.