



[Go to Product page](#)

Datasheet for ABIN7101515

## anti-CBX2 antibody

### 1 Image

#### Overview

Quantity:	20 µL
Target:	CBX2
Reactivity:	Human
Host:	Rabbit
Clonality:	Monoclonal
Conjugate:	This CBX2 antibody is un-conjugated
Application:	Western Blotting (WB)

#### Product Details

Immunogen:	A synthesized peptide derived from human CBX2
Isotype:	IgG
Cross-Reactivity:	Human, Mouse, Rat
Characteristics:	Monoclonal Antibodies
Purification:	Affinity purification

#### Target Details

Target:	CBX2
Alternative Name:	CBX2 ( <a href="#">CBX2 Products</a> )
Background:	This gene encodes a component of the polycomb multiprotein complex, which is required to maintain the transcriptionally repressive state of many genes throughout development via

## Target Details

chromatin remodeling and modification of histones. Disruption of this gene in mice results in male-to-female gonadal sex reversal. Mutations in this gene are also associated with gonadal dysgenesis in humans. Alternatively spliced transcript variants encoding different isoforms have been noted for this gene.[provided by RefSeq, Mar 2010],CDCA6, M33, SRXY5,Chromatin Remodeling,Epigenetics & Nuclear Signaling,CBX2

Molecular Weight: 56 kDa

Gene ID: 84733

UniProt: [Q14781](#)

## Application Details

Application Notes: WB,1:500 - 1:2000

Restrictions: For Research Use only

## Handling

Buffer: PBS with 0.02 % sodium azide,0.05 % BSA,50 % glycerol, pH 7.3.

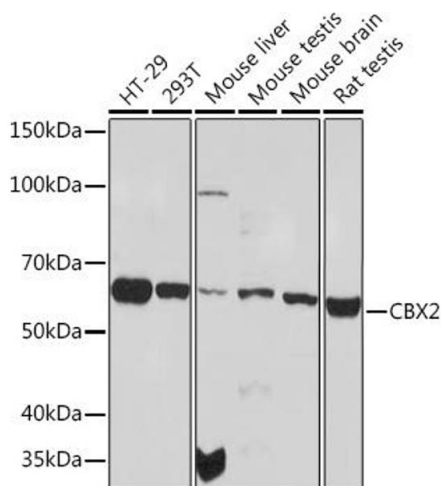
Preservative: Sodium azide

Precaution of Use: This product contains Sodium azide: a POISONOUS AND HAZARDOUS SUBSTANCE which should be handled by trained staff only.

Storage: -20 °C

Storage Comment: Store at -20°C. Avoid freeze / thaw cycles.

## Images



### Western Blotting

**Image 1.** Western blot analysis of extracts of various cell lines, using CBX2 Rabbit mAb (ABIN1679821, ABIN3017652, ABIN3017653 and ABIN7101515) at 1:1000 dilution. Secondary antibody: HRP Goat Anti-Rabbit IgG (H+L) (ABIN1684268 and ABIN3020597) at 1:10000 dilution. Lysates/proteins: 25 µg per lane. Blocking buffer: 3 % nonfat dry milk in TBST. Detection: ECL Basic Kit (RM00020). Exposure time: 90s.