



[Go to Product page](#)

Datasheet for ABIN7101516

anti-E2F2 antibody

1 Image

Overview

Quantity:	20 µL
Target:	E2F2
Reactivity:	Human
Host:	Rabbit
Clonality:	Monoclonal
Conjugate:	This E2F2 antibody is un-conjugated
Application:	Western Blotting (WB)

Product Details

Immunogen:	A synthesized peptide derived from human E2F2
Isotype:	IgG
Cross-Reactivity:	Human, Mouse
Characteristics:	Monoclonal Antibodies
Purification:	Affinity purification

Target Details

Target:	E2F2
Alternative Name:	E2F2 (E2F2 Products)
Background:	The protein encoded by this gene is a member of the E2F family of transcription factors. The E2F family plays a crucial role in the control of cell cycle and action of tumor suppressor

Target Details

proteins and is also a target of the transforming proteins of small DNA tumor viruses. The E2F proteins contain several evolutionally conserved domains found in most members of the family. These domains include a DNA binding domain, a dimerization domain which determines interaction with the differentiation regulated transcription factor proteins (DP), a transactivation domain enriched in acidic amino acids, and a tumor suppressor protein association domain which is embedded within the transactivation domain. This protein and another 2 members, E2F1 and E2F3, have an additional cyclin binding domain. This protein binds specifically to retinoblastoma protein pRB in a cell-cycle dependent manner, and it exhibits overall 46 % amino acid identity to E2F1. [provided by RefSeq, Jul 2008],E2F-2,Epigenetics & Nuclear Signaling,ErbB-HER Signaling Pathway,Signal Transduction,Transcription Factors,E2F2

Molecular Weight: 47 kDa

Gene ID: 1870

UniProt: [Q14209](#)

Pathways: [Cell Division Cycle](#), [Mitotic G1-G1/S Phases](#), [DNA Replication](#)

Application Details

Application Notes: WB,1:500 - 1:2000

Restrictions: For Research Use only

Handling

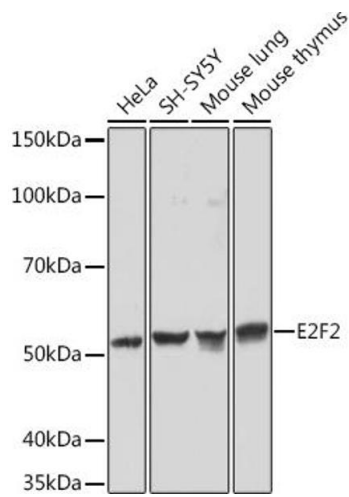
Buffer: PBS with 0.02 % sodium azide,0.05 % BSA,50 % glycerol, pH 7.3.

Preservative: Sodium azide

Precaution of Use: This product contains Sodium azide: a POISONOUS AND HAZARDOUS SUBSTANCE which should be handled by trained staff only.

Storage: -20 °C

Storage Comment: Store at -20°C. Avoid freeze / thaw cycles.



Western Blotting

Image 1. Western blot analysis of extracts of various cell lines, using E2F2 Rabbit mAb (ABIN1680064, ABIN3017656, ABIN3017657 and ABIN7101516) at 1:1000 dilution. Secondary antibody: HRP Goat Anti-Rabbit IgG (H+L) (ABIN1684268 and ABIN3020597) at 1:10000 dilution. Lysates/proteins: 25 μ g per lane. Blocking buffer: 3% nonfat dry milk in TBST. Detection: ECL Basic Kit (RM00020). Exposure time: 1 min.