



[Go to Product page](#)

Datasheet for ABIN7101522

## anti-CDC27 antibody

### 1 Image

#### Overview

Quantity:	20 µL
Target:	CDC27
Reactivity:	Human
Host:	Rabbit
Clonality:	Monoclonal
Conjugate:	This CDC27 antibody is un-conjugated
Application:	Western Blotting (WB)

#### Product Details

Immunogen:	A synthesized peptide derived from human CDC27
Isotype:	IgG
Cross-Reactivity:	Human, Mouse, Rat
Characteristics:	Monoclonal Antibodies
Purification:	Affinity purification

#### Target Details

Target:	CDC27
Alternative Name:	CDC27 ( <a href="#">CDC27 Products</a> )
Background:	The protein encoded by this gene shares strong similarity with <i>Saccharomyces cerevisiae</i> protein Cdc27, and the gene product of <i>Schizosaccharomyces pombe</i> nuc 2. This protein is a

## Target Details

---

component of the anaphase-promoting complex (APC), which is composed of eight protein subunits and is highly conserved in eukaryotic cells. This complex catalyzes the formation of cyclin B-ubiquitin conjugate, which is responsible for the ubiquitin-mediated proteolysis of B-type cyclins. The protein encoded by this gene and three other members of the APC complex contain tetratricopeptide (TPR) repeats, which are important for protein-protein interactions. This protein was shown to interact with mitotic checkpoint proteins including Mad2, p55CDC and BUBR1, and it may thus be involved in controlling the timing of mitosis. Alternative splicing of this gene results in multiple transcript variants. Related pseudogenes have been identified on chromosomes 2, 22 and Y. [provided by RefSeq, May 2014],ANAPC3, APC3, CDC27Hs, D0S1430E, D17S978E, H-NUC, HNUC, NUC2,Cell Biology & Developmental Biology,Cell Cycle,Ubiquitin,Ubiquitin\_Ubiquitin-Proteasome Signaling Pathway,CDC27

Molecular Weight:	91 kDa
Gene ID:	996
UniProt:	<a href="#">P30260</a>

## Application Details

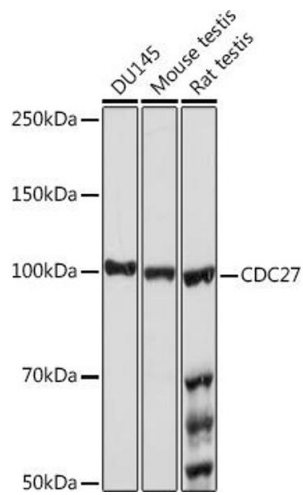
---

Application Notes:	WB,1:500 - 1:2000
Restrictions:	For Research Use only

## Handling

---

Buffer:	PBS with 0.02 % sodium azide,0.05 % BSA,50 % glycerol, pH 7.3.
Preservative:	Sodium azide
Precaution of Use:	This product contains Sodium azide: a POISONOUS AND HAZARDOUS SUBSTANCE which should be handled by trained staff only.
Storage:	-20 °C
Storage Comment:	Store at -20°C. Avoid freeze / thaw cycles.



### Western Blotting

**Image 1.** Western blot analysis of extracts of various cell lines, using CDC27 Rabbit mAb (ABIN1682927, ABIN3017715, ABIN3017716 and ABIN7101522) at 1:1000 dilution. Secondary antibody: HRP Goat Anti-Rabbit IgG (H+L) (ABIN1684268 and ABIN3020597) at 1:10000 dilution. Lysates/proteins: 25 µg per lane. Blocking buffer: 3 % nonfat dry milk in TBST. Detection: ECL Basic Kit (RM00020). Exposure time: 10s.