



[Go to Product page](#)

Datasheet for ABIN7101523

anti-MIB1 antibody

1 Image

Overview

Quantity:	20 µL
Target:	MIB1
Reactivity:	Human
Host:	Rabbit
Clonality:	Monoclonal
Conjugate:	This MIB1 antibody is un-conjugated
Application:	Western Blotting (WB)

Product Details

Immunogen:	A synthesized peptide derived from human MIB1/DIP1
Isotype:	IgG
Cross-Reactivity:	Human, Mouse, Rat
Characteristics:	Monoclonal Antibodies
Purification:	Affinity purification

Target Details

Target:	MIB1
Alternative Name:	MIB1 (MIB1 Products)
Background:	This gene encodes a protein containing multiple ankyrin repeats and RING finger domains that functions as an E3 ubiquitin ligase. The encoded protein positively regulates Notch signaling by

Target Details

ubiquitinating the Notch receptors, thereby facilitating their endocytosis. This protein may also promote the ubiquitination and degradation of death-associated protein kinase 1 (DAPK1).
[provided by RefSeq, Jun 2013],DIP-1, DIP1, LVNC7, MIB, ZZANK2, ZZZ6,Cell Biology & Developmental Biology,Notch Signaling Pathway,Signal Transduction,Stem Cells,MIB1

Molecular Weight: 110 kDa

Gene ID: 57534

UniProt: [Q86YT6](#)

Pathways: [SARS-CoV-2 Protein Interactome](#), [The Global Phosphorylation Landscape of SARS-CoV-2 Infection](#)

Application Details

Application Notes: WB,1:500 - 1:2000

Restrictions: For Research Use only

Handling

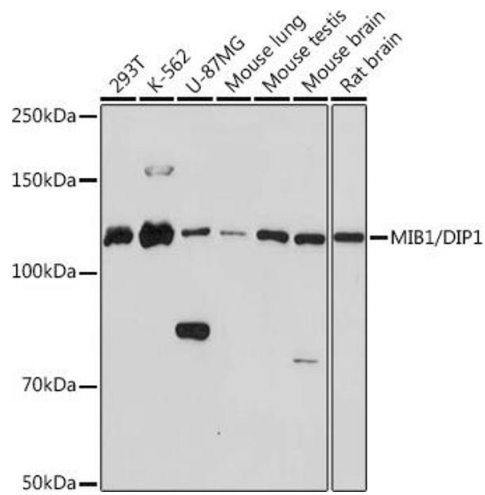
Buffer: PBS with 0.02 % sodium azide,0.05 % BSA,50 % glycerol, pH 7.3.

Preservative: Sodium azide

Precaution of Use: This product contains Sodium azide: a POISONOUS AND HAZARDOUS SUBSTANCE which should be handled by trained staff only.

Storage: -20 °C

Storage Comment: Store at -20°C. Avoid freeze / thaw cycles.



Western Blotting

Image 1. Western blot analysis of extracts of various cell lines, using MIB1/DIP1 Rabbit mAb (ABIN1682649, ABIN3017759, ABIN3017760 and ABIN7101523) at 1:1000 dilution. Secondary antibody: HRP Goat Anti-Rabbit IgG (H+L) (ABIN1684268 and ABIN3020597) at 1:10000 dilution. Lysates/proteins: 25 µg per lane. Blocking buffer: 3 % nonfat dry milk in TBST. Detection: ECL Basic Kit (RM00020). Exposure time: 3 min.