



[Go to Product page](#)

Datasheet for ABIN7101524
anti-PRAS40 antibody

1 Image

Overview

Quantity:	20 µL
Target:	PRAS40 (AKT1S1)
Reactivity:	Human
Host:	Rabbit
Clonality:	Monoclonal
Conjugate:	This PRAS40 antibody is un-conjugated
Application:	Western Blotting (WB)

Product Details

Immunogen:	A synthesized peptide derived from human AKT1S1/AKT1S1/PRAS40
Isotype:	IgG
Cross-Reactivity:	Human, Mouse
Characteristics:	Monoclonal Antibodies
Purification:	Affinity purification

Target Details

Target:	PRAS40 (AKT1S1)
Alternative Name:	AKT1S1 (AKT1S1 Products)
Background:	AKT1S1 is a proline-rich substrate of AKT (MIM 164730) that binds 14-3-3 protein (see YWHAH, MIM 113508) when phosphorylated (Kovacina et al., 2003 [PubMed 12524439]).[supplied by

Target Details

OMIM, Mar 2008],Lobe, PRAS40,Apoptosis,Autophagy,Cell Biology & Developmental Biology,Cell Cycle,Endocrine & Metabolism,Epigenetics & Nuclear Signaling,Immunology & Inflammation,Insulin Receptor Signaling Pathway,Kinase,mTOR Signaling Pathway,Neuroscience,PI3K-Akt Signaling Pathway,PI3K-Akt Signaling Pathway_Akt downstream targets,Protein phosphorylation,Signal Transduction,T Cell Receptor Signaling Pathway,Translation Control,Translational Control_Regulation of eIF4 and p70 S6 Kinase,AKT1S1

Molecular Weight: 40 kDa

Gene ID: 84335

UniProt: [Q96B36](#)

Pathways: [Fc-epsilon Receptor Signaling Pathway](#), [EGFR Signaling Pathway](#), [Neurotrophin Signaling Pathway](#), [Regulation of Cell Size](#), [Autophagy](#), [BCR Signaling](#), [Warburg Effect](#)

Application Details

Application Notes: WB,1:500 - 1:2000

Restrictions: For Research Use only

Handling

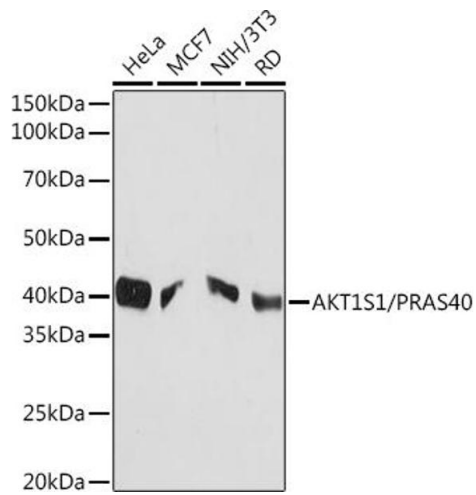
Buffer: PBS with 0.02 % sodium azide,0.05 % BSA,50 % glycerol, pH 7.3.

Preservative: Sodium azide

Precaution of Use: This product contains Sodium azide: a POISONOUS AND HAZARDOUS SUBSTANCE which should be handled by trained staff only.

Storage: -20 °C

Storage Comment: Store at -20°C. Avoid freeze / thaw cycles.



Western Blotting

Image 1. Western blot analysis of extracts of various cell lines, using S1/S1/PR Rabbit mAb (ABIN1683202, ABIN3017773, ABIN3017774 and ABIN7101524) at 1:1000 dilution. Secondary antibody: HRP Goat Anti-Rabbit IgG (H+L) (ABIN1684268 and ABIN3020597) at 1:10000 dilution. Lysates/proteins: 25 µg per lane. Blocking buffer: 3 % nonfat dry milk in TBST. Detection: ECL Basic Kit (RM00020). Exposure time: 3 min.