



[Go to Product page](#)

Datasheet for ABIN7101525

anti-CDC16 antibody

6 Images

Overview

Quantity:	20 µL
Target:	CDC16
Reactivity:	Human
Host:	Rabbit
Clonality:	Monoclonal
Conjugate:	This CDC16 antibody is un-conjugated
Application:	Western Blotting (WB), Immunohistochemistry (IHC), Immunofluorescence (IF)

Product Details

Immunogen:	A synthesized peptide derived from human CDC16
Isotype:	IgG
Cross-Reactivity:	Human, Mouse, Rat
Characteristics:	Monoclonal Antibodies
Purification:	Affinity purification

Target Details

Target:	CDC16
Alternative Name:	CDC16 (CDC16 Products)
Background:	The protein encoded by this gene functions as a protein ubiquitin ligase and is a component of the multiprotein APC complex. The APC complex is a cyclin degradation system that governs

Target Details

exit from mitosis by targeting cell cycle proteins for degradation by the 26S proteasome. Each component protein of the APC complex is highly conserved among eukaryotic organisms. This protein, and other APC complex proteins, contain a tetratricopeptide repeat (TPR) domain, a protein domain that is often involved in protein-protein interactions and the assembly of multiprotein complexes. Multiple alternatively spliced transcript variants, encoding distinct proteins, have been identified. [provided by RefSeq, Jan 2016],ANAPC6, APC6, CDC16Hs, CUT9,Cell Biology & Developmental Biology,Cell Cycle,Ubiquitin,Ubiquitin-Ubiquitin-Proteasome Signaling Pathway,CDC16

Molecular Weight: 72 kDa

Gene ID: 8881

UniProt: [Q13042](#)

Pathways: [Regulation of Actin Filament Polymerization](#)

Application Details

Application Notes: WB,1:500 - 1:2000,IHC,1:50 - 1:200,IF,1:50 - 1:200

Restrictions: For Research Use only

Handling

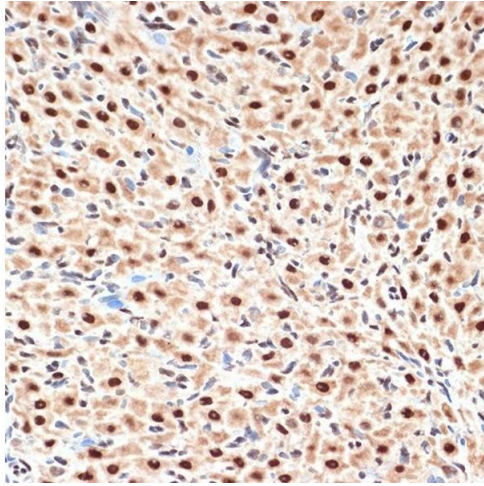
Buffer: PBS with 0.02 % sodium azide,0.05 % BSA,50 % glycerol, pH 7.3.

Preservative: Sodium azide

Precaution of Use: This product contains Sodium azide: a POISONOUS AND HAZARDOUS SUBSTANCE which should be handled by trained staff only.

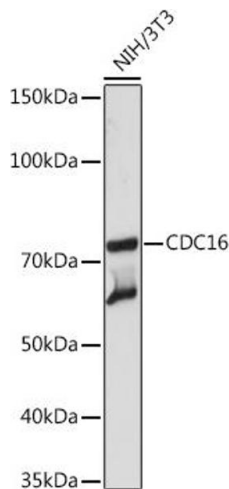
Storage: -20 °C

Storage Comment: Store at -20°C. Avoid freeze / thaw cycles.



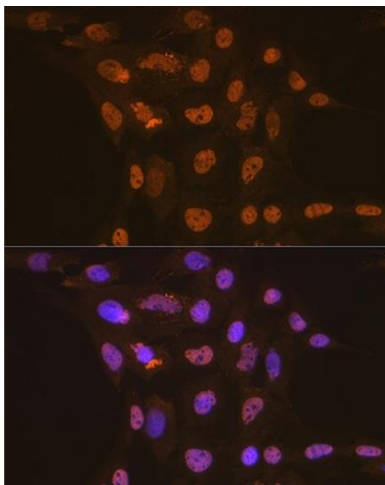
Immunohistochemistry

Image 1. Immunohistochemistry of paraffin-embedded rat ovary using CDC16 Rabbit mAb (ABIN1678585, ABIN3017837, ABIN3017838 and ABIN7101525) at dilution of 1:100 (40x lens). Perform microwave antigen retrieval with 10 mM Tris/EDTA buffer pH 9.0 before commencing with IHC staining protocol.



Western Blotting

Image 2. Western blot analysis of extracts of NIH/3T3 cells, using CDC16 Rabbit mAb (ABIN1678585, ABIN3017837, ABIN3017838 and ABIN7101525) at 1:1000 dilution. Secondary antibody: HRP Goat Anti-Rabbit IgG (H+L) (ABIN1684268 and ABIN3020597) at 1:10000 dilution. Lysates/proteins: 25 µg per lane. Blocking buffer: 3 % nonfat dry milk in TBST. Detection: ECL Basic Kit (RM00020). Exposure time: 10s.



Immunofluorescence

Image 3. Immunofluorescence analysis of C6 cells using CDC16 Rabbit mAb (ABIN1678585, ABIN3017837, ABIN3017838 and ABIN7101525) at dilution of 1:100 (40x lens). Blue: DAPI for nuclear staining.

Please check the [product details page](#) for more images. Overall 6 images are available for ABIN7101525.