



[Go to Product page](#)

Datasheet for ABIN7101527

anti-FOXL2 antibody

2 Images

Overview

Quantity:	20 µL
Target:	FOXL2
Reactivity:	Human
Host:	Rabbit
Clonality:	Monoclonal
Conjugate:	This FOXL2 antibody is un-conjugated
Application:	Western Blotting (WB)

Product Details

Immunogen:	A synthesized peptide derived from human FOXL2
Isotype:	IgG
Cross-Reactivity:	Human, Mouse, Rat
Characteristics:	Monoclonal Antibodies
Purification:	Affinity purification

Target Details

Target:	FOXL2
Alternative Name:	FOXL2 (FOXL2 Products)
Background:	This gene encodes a forkhead transcription factor. The protein contains a fork-head DNA-binding domain and may play a role in ovarian development and function. Expansion of a

Target Details

polyalanine repeat region and other mutations in this gene are a cause of blepharophimosis syndrome and premature ovarian failure 3. [provided by RefSeq, Jul 2016],BPES, BPES1, PFRK, PINTO, POF3,Apoptosis,Cell Biology & Developmental Biology,Epigenetics & Nuclear Signaling,Transcription Factors,FOXL2

Molecular Weight: 38 kDa

Gene ID: 668

UniProt: [P58012](#)

Pathways: [Nuclear Hormone Receptor Binding](#), [Positive Regulation of Endopeptidase Activity](#)

Application Details

Application Notes: WB,1:500 - 1:2000

Restrictions: For Research Use only

Handling

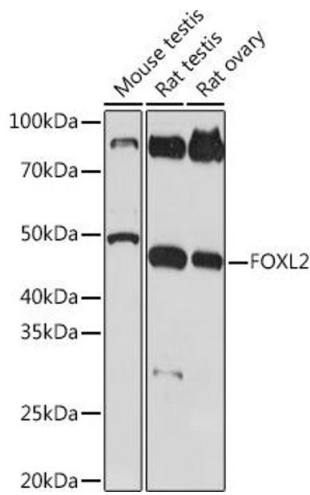
Buffer: PBS with 0.02 % sodium azide,0.05 % BSA,50 % glycerol, pH 7.3.

Preservative: Sodium azide

Precaution of Use: This product contains Sodium azide: a POISONOUS AND HAZARDOUS SUBSTANCE which should be handled by trained staff only.

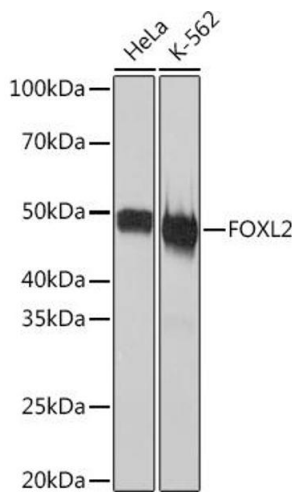
Storage: -20 °C

Storage Comment: Store at -20°C. Avoid freeze / thaw cycles.



Western Blotting

Image 1. Western blot analysis of extracts of various cell lines, using FOXL2 Rabbit mAb (ABIN1682615, ABIN7101527, ABIN7101528 and ABIN7101529) at 1:1000 dilution. Secondary antibody: HRP Goat Anti-Rabbit IgG (H+L) (ABIN1684268 and ABIN3020597) at 1:10000 dilution. Lysates/proteins: 25 µg per lane. Blocking buffer: 3 % nonfat dry milk in TBST. Detection: ECL Basic Kit (RM00020). Exposure time: 3 min.



Western Blotting

Image 2. Western blot analysis of extracts of various cell lines, using FOXL2 Rabbit mAb (ABIN1682615, ABIN7101527, ABIN7101528 and ABIN7101529) at 1:1000 dilution. Secondary antibody: HRP Goat Anti-Rabbit IgG (H+L) (ABIN1684268 and ABIN3020597) at 1:10000 dilution. Lysates/proteins: 25 µg per lane. Blocking buffer: 3 % nonfat dry milk in TBST. Detection: ECL Basic Kit (RM00020). Exposure time: 90s.