



[Go to Product page](#)

Datasheet for ABIN7101530
anti-Ubiquitin B antibody

4 Images

Overview

Quantity:	20 µL
Target:	Ubiquitin B (UBB)
Reactivity:	Human
Host:	Rabbit
Clonality:	Monoclonal
Conjugate:	This Ubiquitin B antibody is un-conjugated
Application:	Western Blotting (WB), Immunofluorescence (IF)

Product Details

Immunogen:	A synthesized peptide derived from human K48-linkage Specific Ubiquitin
Isotype:	IgG
Cross-Reactivity:	Human, Mouse, Rat
Characteristics:	Monoclonal Antibodies
Purification:	Affinity purification

Target Details

Target:	Ubiquitin B (UBB)
Alternative Name:	UBB (UBB Products)
Background:	This gene encodes ubiquitin, one of the most conserved proteins known. Ubiquitin has a major role in targeting cellular proteins for degradation by the 26S proteasome. It is also involved in

Target Details

the maintenance of chromatin structure, the regulation of gene expression, and the stress response. Ubiquitin is synthesized as a precursor protein consisting of either polyubiquitin chains or a single ubiquitin moiety fused to an unrelated protein. This gene consists of three direct repeats of the ubiquitin coding sequence with no spacer sequence. Consequently, the protein is expressed as a polyubiquitin precursor with a final amino acid after the last repeat. An aberrant form of this protein has been detected in patients with Alzheimer's disease and Down syndrome. Pseudogenes of this gene are located on chromosomes 1, 2, 13, and 17. Alternative splicing results in multiple transcript variants. [provided by RefSeq, Aug 2013],HEL-S-50,Apoptosis,Apoptosis_Mitochondrial Control of Apoptosis,Cell Biology & Developmental Biology,Epigenetics & Nuclear Signaling,Neurodegenerative Diseases,Neurodegenerative Diseases_Amyloid Plaque and Neurofibrillary Tangle Formation in Alzheimers Disease,Neuroscience,Ubiquitin,Ubiquitin_Ubiquitin-Proteasome Signaling Pathway,UBB

Gene ID: 7314

UniProt: [P0CG47](#)

Pathways: [Fc-epsilon Receptor Signaling Pathway](#), [EGFR Signaling Pathway](#), [Neurotrophin Signaling Pathway](#), [Activation of Innate immune Response](#), [Mitotic G1-G1/S Phases](#), [DNA Replication](#), [Toll-Like Receptors Cascades](#), [Synthesis of DNA](#), [Autophagy](#), [EGFR Downregulation](#), [Ubiquitin Proteasome Pathway](#)

Application Details

Application Notes: WB,1:500 - 1:2000, IF,1:50 - 1:200

Restrictions: For Research Use only

Handling

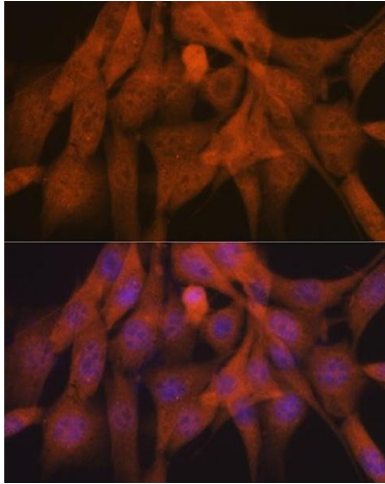
Buffer: PBS with 0.02 % sodium azide,0.05 % BSA,50 % glycerol, pH 7.3.

Preservative: Sodium azide

Precaution of Use: This product contains Sodium azide: a POISONOUS AND HAZARDOUS SUBSTANCE which should be handled by trained staff only.

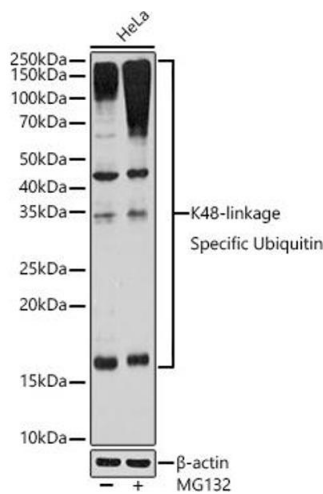
Storage: -20 °C

Storage Comment: Store at -20°C. Avoid freeze / thaw cycles.



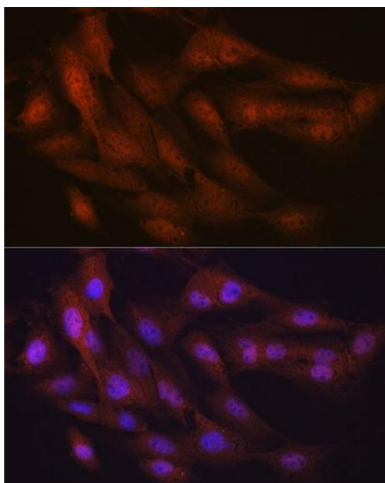
Immunofluorescence

Image 1. Immunofluorescence analysis of NIH-3T3 cells using K48-linkage Specific Ubiquitin Rabbit mAb (ABIN1680189, ABIN3017871, ABIN3017872 and ABIN7101530) at dilution of 1:100 (40x lens). Blue: DAPI for nuclear staining.



Western Blotting

Image 2. Western blot analysis of extracts of HeLa cells, using K48-linkage Specific Ubiquitin Rabbit mAb (ABIN1680189, ABIN3017871, ABIN3017872 and ABIN7101530) at 1:10000 dilution. HeLa cells were treated by MG132 (50 μM) at 37 °C for 90 minutes. Secondary antibody: HRP Goat Anti-Rabbit IgG (H+L) (ABIN1684268 and ABIN3020597) at 1:10000 dilution. Lysates/proteins: 25 μg per lane. Blocking buffer: 3% nonfat dry milk in TBST. Detection: ECL Basic Kit (RM00020). Exposure time: 180s.



Immunofluorescence

Image 3. Immunofluorescence analysis of C6 cells using K48-linkage Specific Ubiquitin Rabbit mAb (ABIN1680189, ABIN3017871, ABIN3017872 and ABIN7101530) at dilution of 1:100 (40x lens). Blue: DAPI for nuclear staining.

Please check the [product details page](#) for more images. Overall 4 images are available for ABIN7101530.