



[Go to Product page](#)

Datasheet for ABIN7101531

## anti-ODF2 antibody

### 1 Image

#### Overview

Quantity:	20 µL
Target:	ODF2
Reactivity:	Human
Host:	Rabbit
Clonality:	Monoclonal
Conjugate:	This ODF2 antibody is un-conjugated
Application:	Western Blotting (WB)

#### Product Details

Immunogen:	A synthesized peptide derived from human Cenexin1 / ODF2
Isotype:	IgG
Cross-Reactivity:	Human
Characteristics:	Monoclonal Antibodies
Purification:	Affinity purification

#### Target Details

Target:	ODF2
Alternative Name:	ODF2 ( <a href="#">ODF2 Products</a> )
Background:	The outer dense fibers are cytoskeletal structures that surround the axoneme in the middle piece and principal piece of the sperm tail. The fibers function in maintaining the elastic

## Target Details

---

structure and recoil of the sperm tail as well as in protecting the tail from shear forces during epididymal transport and ejaculation. Defects in the outer dense fibers lead to abnormal sperm morphology and infertility. This gene encodes one of the major outer dense fiber proteins. Alternative splicing results in multiple transcript variants. The longer transcripts, also known as 'Cenexins', encode proteins with a C-terminal extension that are differentially targeted to somatic centrioles and thought to be crucial for the formation of microtubule organizing centers. [provided by RefSeq, Oct 2010],CT134, ODF2/1, ODF2/2, ODF84,Cell Biology & Developmental Biology,Cell Cycle,Cell Cycle\_Centrosome,Epigenetics & Nuclear Signaling,ODF2

Molecular Weight: 95 kDa

Gene ID: 4957

UniProt: [Q5BJF6](#)

Pathways: [M Phase](#)

## Application Details

---

Application Notes: WB,1:500 - 1:2000

Restrictions: For Research Use only

## Handling

---

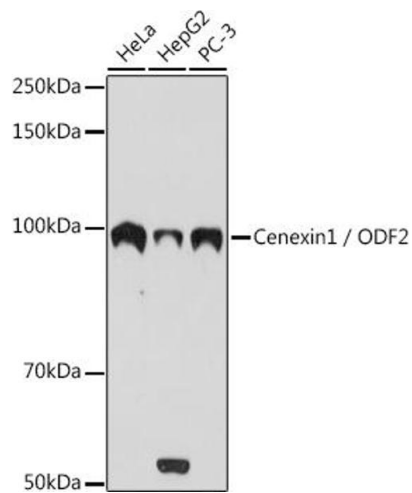
Buffer: PBS with 0.02 % sodium azide,0.05 % BSA,50 % glycerol, pH 7.3.

Preservative: Sodium azide

Precaution of Use: This product contains Sodium azide: a POISONOUS AND HAZARDOUS SUBSTANCE which should be handled by trained staff only.

Storage: -20 °C

Storage Comment: Store at -20°C. Avoid freeze / thaw cycles.



### Western Blotting

**Image 1.** Western blot analysis of extracts of various cell lines, using Cenexin1 / ODF2 antibody (ABIN1680357, ABIN3017873, ABIN3017874 and ABIN7101531) at 1:1000 dilution. Secondary antibody: HRP Goat Anti-Rabbit IgG (H+L) (ABIN1684268 and ABIN3020597) at 1:10000 dilution. Lysates/proteins: 25  $\mu$ g per lane. Blocking buffer: 3% nonfat dry milk in TBST. Detection: ECL Basic Kit (RM00020). Exposure time: 10s.