



[Go to Product page](#)

Datasheet for ABIN7101532

## anti-GPA33 antibody

### 3 Images

#### Overview

Quantity:	20 µL
Target:	GPA33
Reactivity:	Human
Host:	Rabbit
Clonality:	Monoclonal
Conjugate:	This GPA33 antibody is un-conjugated
Application:	Western Blotting (WB), Immunohistochemistry (IHC), Immunofluorescence (IF)

#### Product Details

Immunogen:	A synthesized peptide derived from human GPA33
Isotype:	IgG
Cross-Reactivity:	Human, Mouse, Rat
Characteristics:	Monoclonal Antibodies
Purification:	Affinity purification

#### Target Details

Target:	GPA33
Alternative Name:	GPA33 ( <a href="#">GPA33 Products</a> )
Background:	The glycoprotein encoded by this gene is a cell surface antigen that is expressed in greater than 95 % of human colon cancers. The open reading frame encodes a 319-amino acid polypeptide

## Target Details

---

having a putative secretory signal sequence and 3 potential glycosylation sites. The predicted mature protein has a 213-amino acid extracellular region, a single transmembrane domain, and a 62-amino acid intracellular tail. The sequence of the extracellular region contains 2 domains characteristic of the CD2 subgroup of the immunoglobulin (Ig) superfamily. [provided by RefSeq, Jul 2008],A33,Cancer,Immunology & Inflammation,Tumor biomarkers,Tumor immunology,Tumor immunology\_Tumor-associated antigens,GPA33

---

Molecular Weight: 50 kDa

---

Gene ID: 10223

---

UniProt: [Q99795](#)

## Application Details

---

---

Application Notes: WB,1:500 - 1:2000,IHC,1:50 - 1:200,IF,1:50 - 1:200

---

Restrictions: For Research Use only

## Handling

---

---

Buffer: PBS with 0.02 % sodium azide,0.05 % BSA,50 % glycerol, pH 7.3.

---

Preservative: Sodium azide

---

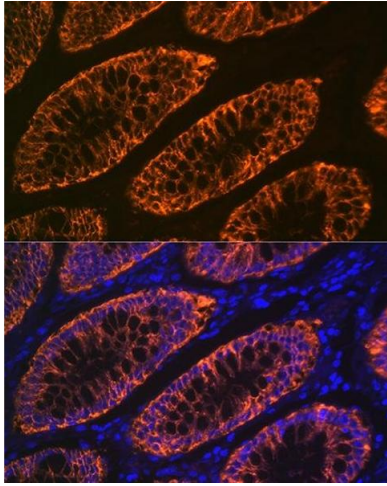
Precaution of Use: This product contains Sodium azide: a POISONOUS AND HAZARDOUS SUBSTANCE which should be handled by trained staff only.

---

Storage: -20 °C

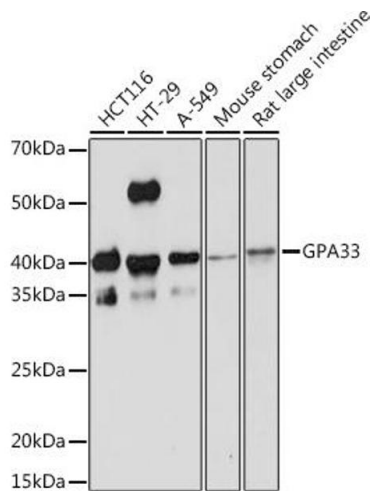
---

Storage Comment: Store at -20°C. Avoid freeze / thaw cycles.



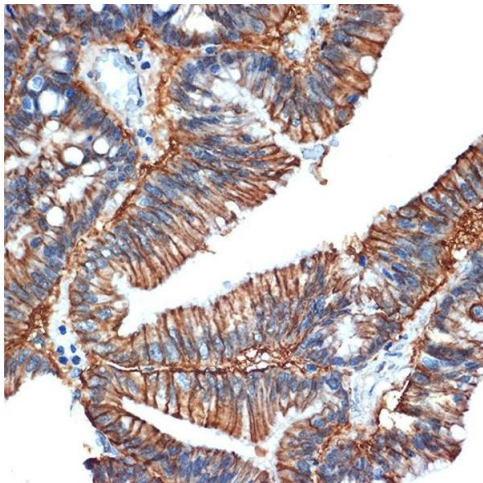
### Immunofluorescence

**Image 1.** Immunofluorescence analysis of human colon carcinoma using GP Rabbit mAb (ABIN1682863, ABIN3017875, ABIN3017876 and ABIN7101532) at dilution of 1:100 (40x lens). Blue: DAPI for nuclear staining.



### Western Blotting

**Image 2.** Western blot analysis of extracts of various cell lines, using GP Rabbit mAb (ABIN1682863, ABIN3017875, ABIN3017876 and ABIN7101532) at 1:1000 dilution. Secondary antibody: HRP Goat Anti-Rabbit IgG (H+L) (ABIN1684268 and ABIN3020597) at 1:10000 dilution. Lysates/proteins: 25 µg per lane. Blocking buffer: 3 % nonfat dry milk in TBST. Detection: ECL Basic Kit (RM00020). Exposure time: 1 min.



### Immunohistochemistry

**Image 3.** Immunohistochemistry of paraffin-embedded human colon carcinoma using GP Rabbit mAb (ABIN1682863, ABIN3017875, ABIN3017876 and ABIN7101532) at dilution of 1:100 (40x lens). Perform microwave antigen retrieval with 10 mM Tris/EDTA buffer pH 9.0 before commencing with IHC staining protocol.