



[Go to Product page](#)

Datasheet for ABIN7101542

anti-Angiotensin II Type 2 Receptor antibody

1 Image

Overview

Quantity:	20 µL
Target:	Angiotensin II Type 2 Receptor (AGTR2)
Reactivity:	Human
Host:	Rabbit
Clonality:	Monoclonal
Conjugate:	This Angiotensin II Type 2 Receptor antibody is un-conjugated
Application:	Western Blotting (WB)

Product Details

Immunogen:	A synthesized peptide derived from human AGTR2
Isotype:	IgG
Cross-Reactivity:	Human, Mouse, Rat
Characteristics:	Monoclonal Antibodies
Purification:	Affinity purification

Target Details

Target:	Angiotensin II Type 2 Receptor (AGTR2)
Alternative Name:	AGTR2 (AGTR2 Products)
Background:	The protein encoded by this gene belongs to the G-protein coupled receptor 1 family, and functions as a receptor for angiotensin II. It is an intergral membrane protein that is highly

Target Details

expressed in fetus, but scantily in adult tissues, except brain, adrenal medulla, and atretic ovary. This receptor has been shown to mediate programmed cell death and this apoptotic function may play an important role in developmental biology and pathophysiology. Mutations in this gene are been associated with X-linked mental retardation. [provided by RefSeq, Jan 2010],AT2, ATGR2, MRX88,Apoptosis,Blood,Blood_Blood Pressure regulation,Cardiovascular,Cell Biology & Developmental Biology,G protein signaling,G protein signaling_G-Protein-Coupled Receptors(GPCR),Signal Transduction,AGTR2

Molecular Weight: 41 kDa

Gene ID: 186

UniProt: [P50052](#)

Pathways: [ACE Inhibitor Pathway](#), [Hormone Transport](#), [Regulation of Systemic Arterial Blood Pressure by Hormones](#)

Application Details

Application Notes: WB,1:500 - 1:2000

Restrictions: For Research Use only

Handling

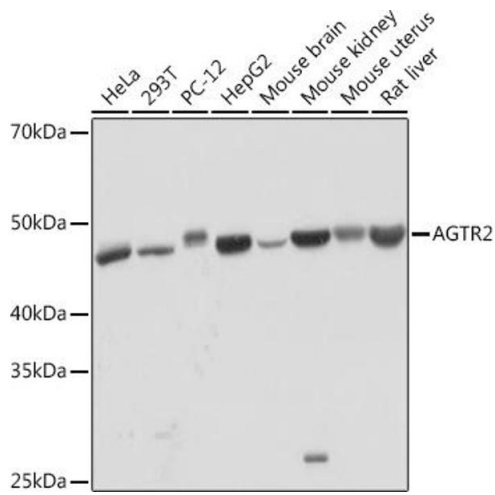
Buffer: PBS with 0.02 % sodium azide,0.05 % BSA,50 % glycerol, pH 7.3.

Preservative: Sodium azide

Precaution of Use: This product contains Sodium azide: a POISONOUS AND HAZARDOUS SUBSTANCE which should be handled by trained staff only.

Storage: -20 °C

Storage Comment: Store at -20°C. Avoid freeze / thaw cycles.



Western Blotting

Image 1. Western blot analysis of extracts of various cell lines, using Rabbit mAb (ABIN1682191, ABIN3017949, ABIN3017950 and ABIN7101542) at 1:1000 dilution. Secondary antibody: HRP Goat Anti-Rabbit IgG (H+L) (ABIN1684268 and ABIN3020597) at 1:10000 dilution. Lysates/proteins: 25 µg per lane. Blocking buffer: 3 % nonfat dry milk in TBST. Detection: ECL Basic Kit (RM00020). Exposure time: 1 min.