



Datasheet for ABIN7101548
anti-PFKM antibody



[Go to Product page](#)

2 Images

Overview

Quantity:	20 µL
Target:	PFKM
Reactivity:	Human
Host:	Rabbit
Clonality:	Monoclonal
Conjugate:	This PFKM antibody is un-conjugated
Application:	Western Blotting (WB)

Product Details

Immunogen:	A synthesized peptide derived from human Fructose 6 Phosphate Kinase
Isotype:	IgG
Cross-Reactivity:	Human, Mouse, Rat
Characteristics:	Monoclonal Antibodies
Purification:	Affinity purification

Target Details

Target:	PFKM
Alternative Name:	PFKM (PFKM Products)
Background:	Three phosphofructokinase isozymes exist in humans: muscle, liver and platelet. These isozymes function as subunits of the mammalian tetramer phosphofructokinase, which

Target Details

catalyzes the phosphorylation of fructose-6-phosphate to fructose-1,6-bisphosphate. Tetramer composition varies depending on tissue type. This gene encodes the muscle-type isozyme. Mutations in this gene have been associated with glycogen storage disease type VII, also known as Tarui disease. Alternatively spliced transcript variants have been described.[provided by RefSeq, Nov 2009],ATP-PFK, GSD7, PFK-1, PFK1, PFKA, PFKX, PPP1R122,Cancer,Carbohydrate metabolism,Endocrine & Metabolism,Signal Transduction,Warburg Effect,PFKM

Molecular Weight: 81 kDa

Gene ID: 5213

UniProt: [P08237](#)

Pathways: [Positive Regulation of Peptide Hormone Secretion](#), [Negative Regulation of Hormone Secretion](#), [Carbohydrate Homeostasis](#), [Warburg Effect](#)

Application Details

Application Notes: WB,1:500 - 1:2000

Restrictions: For Research Use only

Handling

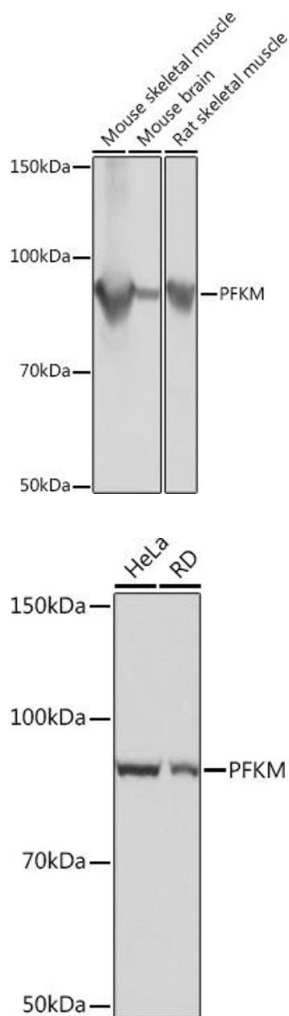
Buffer: PBS with 0.02 % sodium azide,0.05 % BSA,50 % glycerol, pH 7.3.

Preservative: Sodium azide

Precaution of Use: This product contains Sodium azide: a POISONOUS AND HAZARDOUS SUBSTANCE which should be handled by trained staff only.

Storage: -20 °C

Storage Comment: Store at -20°C. Avoid freeze / thaw cycles.



Western Blotting

Image 1. Western blot analysis of extracts of various cell lines, using PFKM Rabbit mAb (ABIN1678746, ABIN7101548, ABIN7101549 and ABIN7101550) at 1:1000 dilution. Secondary antibody: HRP Goat Anti-Rabbit IgG (H+L) (ABIN1684268 and ABIN3020597) at 1:10000 dilution. Lysates/proteins: 25 µg per lane. Blocking buffer: 3 % nonfat dry milk in TBST. Detection: ECL Basic Kit (RM00020). Exposure time: 1s.

Western Blotting

Image 2. Western blot analysis of extracts of various cell lines, using PFKM Rabbit mAb (ABIN1678746, ABIN7101548, ABIN7101549 and ABIN7101550) at 1:1000 dilution. Secondary antibody: HRP Goat Anti-Rabbit IgG (H+L) (ABIN1684268 and ABIN3020597) at 1:10000 dilution. Lysates/proteins: 25 µg per lane. Blocking buffer: 3 % nonfat dry milk in TBST. Detection: ECL Basic Kit (RM00020). Exposure time: 10s.