



Datasheet for ABIN7101552
anti-RPS19 antibody



[Go to Product page](#)

3 Images

Overview

Quantity:	20 µL
Target:	RPS19
Reactivity:	Human
Host:	Rabbit
Clonality:	Monoclonal
Conjugate:	This RPS19 antibody is un-conjugated
Application:	Western Blotting (WB), Immunofluorescence (IF)

Product Details

Immunogen:	A synthesized peptide derived from human RPS19
Isotype:	IgG
Cross-Reactivity:	Human, Mouse, Rat
Characteristics:	Monoclonal Antibodies
Purification:	Affinity purification

Target Details

Target:	RPS19
Alternative Name:	RPS19 (RPS19 Products)
Background:	Ribosomes, the organelles that catalyze protein synthesis, consist of a small 40S subunit and a large 60S subunit. Together these subunits are composed of 4 RNA species and approximately

Target Details

80 structurally distinct proteins. This gene encodes a ribosomal protein that is a component of the 40S subunit. The protein belongs to the S19E family of ribosomal proteins. It is located in the cytoplasm. Mutations in this gene cause Diamond-Blackfan anemia (DBA), a constitutional erythroblastopenia characterized by absent or decreased erythroid precursors, in a subset of patients. This suggests a possible extra-ribosomal function for this gene in erythropoietic differentiation and proliferation, in addition to its ribosomal function. Higher expression levels of this gene in some primary colon carcinomas compared to matched normal colon tissues has been observed. As is typical for genes encoding ribosomal proteins, there are multiple processed pseudogenes of this gene dispersed through the genome. [provided by RefSeq, Jul 2008],DBA, DBA1, S19,Epigenetics & Nuclear Signaling,RPS19

Molecular Weight: 16 kDa

Gene ID: 6223

UniProt: [P39019](#)

Pathways: [Positive Regulation of Immune Effector Process](#), [Ribonucleoprotein Complex Subunit Organization](#), [Ribosome Assembly](#)

Application Details

Application Notes: WB,1:500 - 1:2000, IF,1:50 - 1:200

Restrictions: For Research Use only

Handling

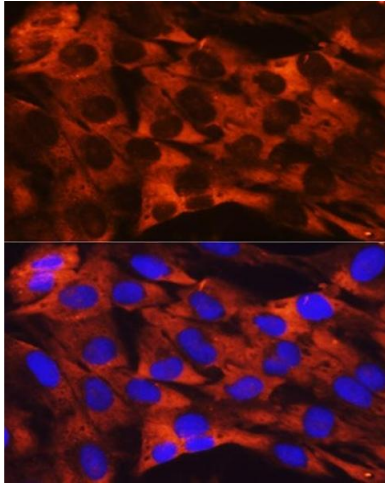
Buffer: PBS with 0.02 % sodium azide,0.05 % BSA,50 % glycerol, pH 7.3.

Preservative: Sodium azide

Precaution of Use: This product contains Sodium azide: a POISONOUS AND HAZARDOUS SUBSTANCE which should be handled by trained staff only.

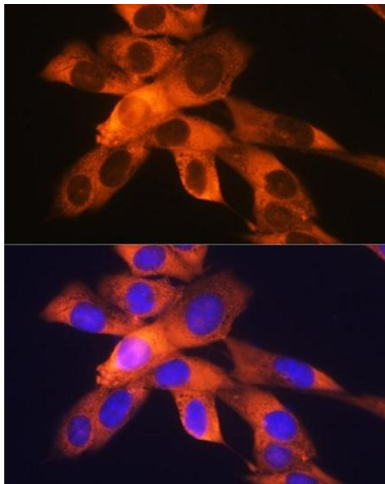
Storage: -20 °C

Storage Comment: Store at -20°C. Avoid freeze / thaw cycles.



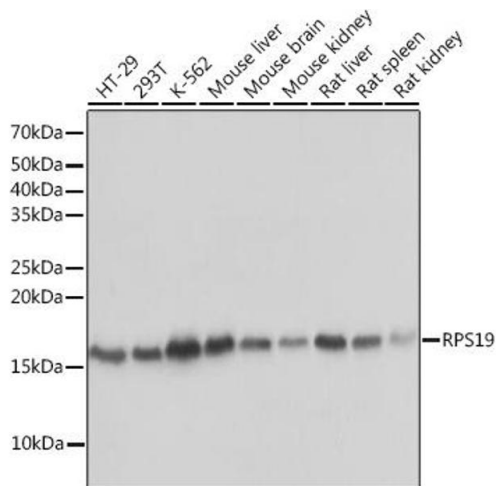
Immunofluorescence

Image 1. Immunofluorescence analysis of C6 cells using RPS19 Rabbit mAb (ABIN1681275, ABIN3017969, ABIN3017970 and ABIN7101552) at dilution of 1:100 (40x lens). Blue: DAPI for nuclear staining.



Immunofluorescence

Image 2. Immunofluorescence analysis of NIH-3T3 cells using RPS19 Rabbit mAb (ABIN1681275, ABIN3017969, ABIN3017970 and ABIN7101552) at dilution of 1:100 (40x lens). Blue: DAPI for nuclear staining.



Western Blotting

Image 3. Western blot analysis of extracts of various cell lines, using RPS19 Rabbit mAb (ABIN1681275, ABIN3017969, ABIN3017970 and ABIN7101552) at 1:1000 dilution. Secondary antibody: HRP Goat Anti-Rabbit IgG (H+L) (ABIN1684268 and ABIN3020597) at 1:10000 dilution. Lysates/proteins: 25 µg per lane. Blocking buffer: 3 % nonfat dry milk in TBST. Detection: ECL Basic Kit (RM00020). Exposure time: 1s.