



Datasheet for ABIN7101554

## anti-GAL4 antibody



[Go to Product page](#)

### 7 Images

#### Overview

Quantity:	20 µL
Target:	GAL4 (LGALS4)
Reactivity:	Human
Host:	Rabbit
Clonality:	Monoclonal
Conjugate:	This GAL4 antibody is un-conjugated
Application:	Western Blotting (WB), Immunohistochemistry (IHC), Immunoprecipitation (IP), Immunofluorescence (IF)

#### Product Details

Immunogen:	A synthesized peptide derived from human Galectin 4/LGALS4
Isotype:	IgG
Cross-Reactivity:	Human, Mouse, Rat
Characteristics:	Monoclonal Antibodies
Purification:	Affinity purification

#### Target Details

Target:	GAL4 (LGALS4)
Alternative Name:	LGALS4 ( <a href="#">LGALS4 Products</a> )
Background:	The galectins are a family of beta-galactoside-binding proteins implicated in modulating cell-

## Target Details

cell and cell-matrix interactions. The expression of this gene is restricted to small intestine, colon, and rectum, and it is underexpressed in colorectal cancer. [provided by RefSeq, Jul 2008],GAL4, L36LBP,Cell Adhesion,Cell Adhesion\_Gap Junctions,Cell Biology & Developmental Biology,Cytoskeleton,Endocrine & Metabolism,Epigenetics & Nuclear Signaling,Signal Transduction,Transcription Factors,LGALS4

Molecular Weight: 36 kDa

Gene ID: 3960

UniProt: [P56470](#)

## Application Details

Application Notes: WB,1:500 - 1:2000,IHC,1:50 - 1:200,IF,1:50 - 1:200,IP,1:50 - 1:200

Restrictions: For Research Use only

## Handling

Buffer: PBS with 0.02 % sodium azide,0.05 % BSA,50 % glycerol, pH 7.3.

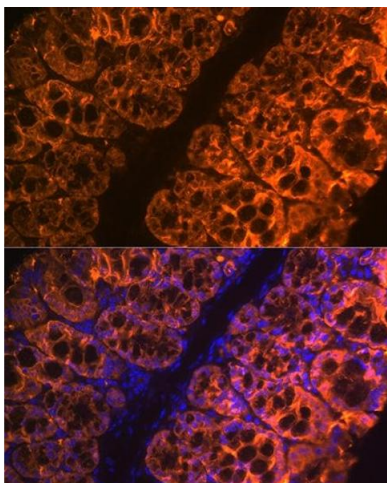
Preservative: Sodium azide

Precaution of Use: This product contains Sodium azide: a POISONOUS AND HAZARDOUS SUBSTANCE which should be handled by trained staff only.

Storage: -20 °C

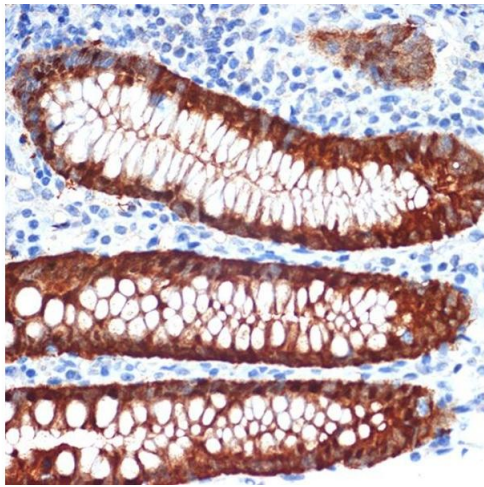
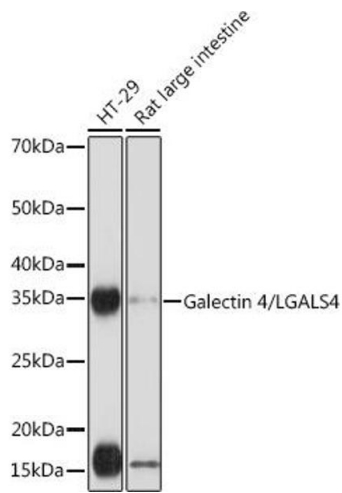
Storage Comment: Store at -20°C. Avoid freeze / thaw cycles.

## Images



### Immunofluorescence

**Image 1.** Immunofluorescence analysis of mouse large intestine using Galectin 4/LG Rabbit mAb (ABIN1679347, ABIN3017979, ABIN3017980 and ABIN7101554) at dilution of 1:100 (40x lens). Blue: DAPI for nuclear staining.



### Western Blotting

**Image 2.** Western blot analysis of extracts of various cell lines, using Galectin 4/LG Rabbit mAb (ABIN1679347, ABIN3017979, ABIN3017980 and ABIN7101554) at 1:1000 dilution. Secondary antibody: HRP Goat Anti-Rabbit IgG (H+L) (ABIN1684268 and ABIN3020597) at 1:10000 dilution. Lysates/proteins: 25 µg per lane. Blocking buffer: 3 % nonfat dry milk in TBST. Detection: ECL Basic Kit (RM00020). Exposure time: 30s.

### Immunohistochemistry

**Image 3.** Immunohistochemistry of paraffin-embedded human appendix using Galectin 4/LG Rabbit mAb (ABIN1679347, ABIN3017979, ABIN3017980 and ABIN7101554) at dilution of 1:100 (40x lens). Perform microwave antigen retrieval with 10 mM Tris/EDTA buffer pH 9.0 before commencing with IHC staining protocol.

Please check the [product details page](#) for more images. Overall 7 images are available for ABIN7101554.