



[Go to Product page](#)

Datasheet for ABIN710156

## anti-MYL6 antibody (pSer30, pTyr29)

### 1 Image

#### Overview

Quantity:	100 µL
Target:	MYL6
Binding Specificity:	pSer30, pTyr29
Reactivity:	Mouse
Host:	Rabbit
Clonality:	Polyclonal
Conjugate:	This MYL6 antibody is un-conjugated
Application:	ELISA, Immunofluorescence (Cultured Cells) (IF (cc)), Immunofluorescence (Paraffin-embedded Sections) (IF (p)), Immunohistochemistry (Paraffin-embedded Sections) (IHC (p)), Immunohistochemistry (Frozen Sections) (IHC (fro))

#### Product Details

Immunogen:	KLH conjugated synthetic phosphopeptide derived from human MYL6 around the phosphorylation site of Tyr29+Ser30
Isotype:	IgG
Cross-Reactivity:	Mouse
Predicted Reactivity:	Human,Rat,Sheep,Pig,Chicken
Purification:	Purified by Protein A.

#### Target Details

Target:	MYL6
---------	------

## Target Details

---

Alternative Name: MYL6+ ([MYL6 Products](#))

---

Background: Synonyms: ESMLC, LC 17, LC17, LC17 GI, LC17 NM, LC17A, LC17B, MLC 3, MLC-3, MLC1SM, MLC3, MLC3NM, MLC3SM, MYL 6, MYL6, MYL6\_HUMAN, Myosin light chain 3, Myosin light chain 6 alkali smooth muscle and non muscle, Myosin light chain A3, Myosin light chain alkali 3, Myosin light polypeptide 6 alkali smooth muscle and non muscle, Myosin light polypeptide 6, Smooth muscle and non muscle myosin alkali light chain, Smooth muscle and nonmuscle myosin light chain alkali 6, 17 kDa myosin light chain.

Background: Myosin is a hexameric ATPase cellular motor protein. It is composed of two heavy chains, two nonphosphorylatable alkali light chains, and two phosphorylatable regulatory light chains. This gene encodes a myosin alkali light chain that is expressed in smooth muscle and non-muscle tissues. Genomic sequences representing several pseudogenes have been described and two transcript variants encoding different isoforms have been identified for this gene.

---

Gene ID: 4637

---

## Application Details

---

Application Notes: ELISA 1:500-1000  
IHC-P 1:200-400  
IHC-F 1:100-500  
IF(IHC-P) 1:50-200  
IF(IHC-F) 1:50-200  
IF(ICC) 1:50-200

---

Restrictions: For Research Use only

---

## Handling

---

Format: Liquid

---

Concentration: 1 µg/µL

---

Buffer: 0.01M TBS( pH 7.4) with 1 % BSA, 0.02 % Proclin300 and 50 % Glycerol.

---

Preservative: ProClin

---

Precaution of Use: This product contains ProClin: a POISONOUS AND HAZARDOUS SUBSTANCE, which should be handled by trained staff only.

---

Storage: 4 °C, -20 °C

---

## Handling

---

Storage Comment: Shipped at 4°C. Store at -20°C for one year. Avoid repeated freeze/thaw cycles.

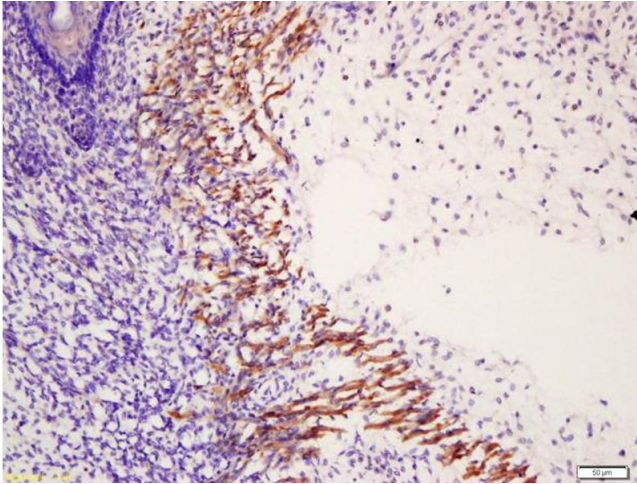
---

Expiry Date: 12 months

---

## Images

---



### Immunohistochemistry

**Image 1.** Formalin-fixed and paraffin embedded mouse embryonic muscle labeled with Anti-phospho-MYL6(Tyr29+Ser30) Polyclonal Antibody, Unconjugated (ABIN710156) at 1:200 followed by conjugation to the secondary antibody and DAB staining