



[Go to Product page](#)

Datasheet for ABIN7101569

anti-Desmin antibody

3 Images

Overview

Quantity:	20 µL
Target:	Desmin (DES)
Reactivity:	Human
Host:	Rabbit
Clonality:	Monoclonal
Conjugate:	This Desmin antibody is un-conjugated
Application:	Western Blotting (WB), Immunohistochemistry (IHC), Immunofluorescence (IF)

Product Details

Immunogen:	A synthesized peptide derived from human Desmin
Isotype:	IgG
Cross-Reactivity:	Human, Mouse, Rat
Characteristics:	Monoclonal Antibodies
Purification:	Affinity purification

Target Details

Target:	Desmin (DES)
Alternative Name:	DES (DES Products)
Background:	This gene encodes a muscle-specific class III intermediate filament. Homopolymers of this protein form a stable intracytoplasmic filamentous network connecting myofibrils to each other

Target Details

and to the plasma membrane. Mutations in this gene are associated with desmin-related myopathy, a familial cardiac and skeletal myopathy (CSM), and with distal myopathies. [provided by RefSeq, Jul 2008],CSM1, CSM2, LGMD2R,Cancer,Cardiovascular,Cell Biology & Developmental Biology,Cytoskeleton,Cytoskeleton_Intermediate Filaments,Extracellular Matrix,Heart,Heart_Cardiac arrhythmias,Invasion and Metastasis,Mesenchymal Stem Cells,Signal Transduction,Stem Cells,DES

Molecular Weight: 53 kDa

Gene ID: 1674

UniProt: [P17661](#)

Application Details

Application Notes: WB,1:500 - 1:2000,IHC,1:50 - 1:200,IF,1:50 - 1:200

Restrictions: For Research Use only

Handling

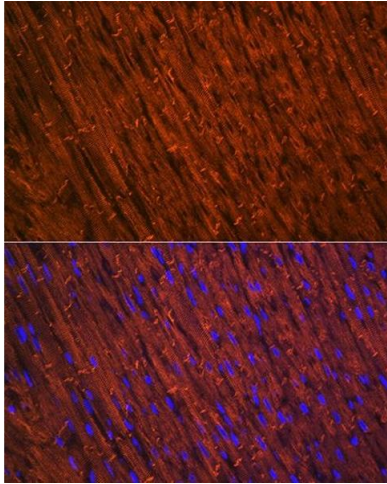
Buffer: PBS with 0.02 % sodium azide,0.05 % BSA,50 % glycerol, pH 7.3.

Preservative: Sodium azide

Precaution of Use: This product contains Sodium azide: a POISONOUS AND HAZARDOUS SUBSTANCE which should be handled by trained staff only.

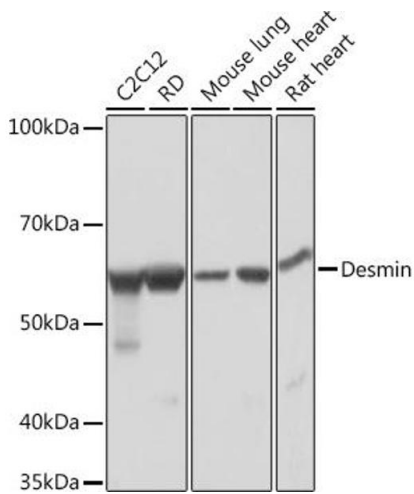
Storage: -20 °C

Storage Comment: Store at -20°C. Avoid freeze / thaw cycles.



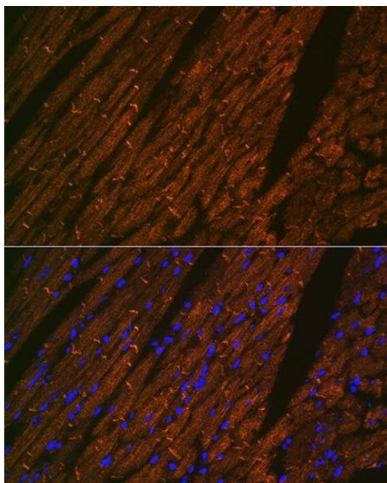
Immunohistochemistry

Image 1. Immunohistochemistry of paraffin-embedded human colon using Desmin Rabbit mAb (ABIN1678733, ABIN3018020, ABIN3018021 and ABIN7101569) at dilution of 1:100 (40x lens).



Western Blotting

Image 2. Western blot analysis of extracts of various cell lines, using Desmin Rabbit mAb (ABIN1678733, ABIN3018020, ABIN3018021 and ABIN7101569) at 1:1000 dilution. Secondary antibody: HRP Goat Anti-Rabbit IgG (H+L) (ABIN1684268 and ABIN3020597) at 1:10000 dilution. Lysates/proteins: 25 µg per lane. Blocking buffer: 3 % nonfat dry milk in TBST. Detection: ECL Basic Kit (RM00020). Exposure time: 1s.



Immunofluorescence

Image 3. Immunofluorescence analysis of rat heart using Desmin Rabbit mAb (ABIN1678733, ABIN3018020, ABIN3018021 and ABIN7101569) at dilution of 1:100 (40x lens). Blue: DAPI for nuclear staining.