

Datasheet for ABIN7101570
anti-Filamin A antibody



[Go to Product page](#)

4 Images

Overview

Quantity:	20 µL
Target:	Filamin A (FLNA)
Reactivity:	Human
Host:	Rabbit
Clonality:	Monoclonal
Conjugate:	This Filamin A antibody is un-conjugated
Application:	Western Blotting (WB), Immunohistochemistry (IHC)

Product Details

Immunogen:	A synthesized peptide derived from human Filamin A
Isotype:	IgG
Cross-Reactivity:	Human, Mouse, Rat
Characteristics:	Monoclonal Antibodies
Purification:	Affinity purification

Target Details

Target:	Filamin A (FLNA)
Alternative Name:	FLNA (FLNA Products)
Background:	The protein encoded by this gene is an actin-binding protein that crosslinks actin filaments and links actin filaments to membrane glycoproteins. The encoded protein is involved in remodeling

Target Details

the cytoskeleton to effect changes in cell shape and migration. This protein interacts with integrins, transmembrane receptor complexes, and second messengers. Defects in this gene are a cause of several syndromes, including periventricular nodular heterotopias (PVNH1, PVNH4), otopalatodigital syndromes (OPD1, OPD2), frontometaphyseal dysplasia (FMD), Melnick-Needles syndrome (MNS), and X-linked congenital idiopathic intestinal pseudoobstruction (CIIPX). Two transcript variants encoding different isoforms have been found for this gene.[provided by RefSeq, Mar 2009],ABP-280, ABPX, CSBS, CVD1, FLN, FLN-A, FLN1, FMD, MNS, NHBP, OPD, OPD1, OPD2, XLVD, XMVD,Cell Biology & Developmental Biology,Cytoskeleton,Cytoskeleton_Actins,Cytoskeleton_Microfilaments,Epigenetics & Nuclear Signaling,MAPK-Erk Signaling Pathway,Protein phosphorylation,RNA Binding,Signal Transduction,FLNA

Molecular Weight: 281 kDa

Gene ID: 2316

UniProt: [P21333](#)

Pathways: [TCR Signaling](#), [Maintenance of Protein Location](#)

Application Details

Application Notes: WB,1:500 - 1:2000,IHC,1:50 - 1:200

Restrictions: For Research Use only

Handling

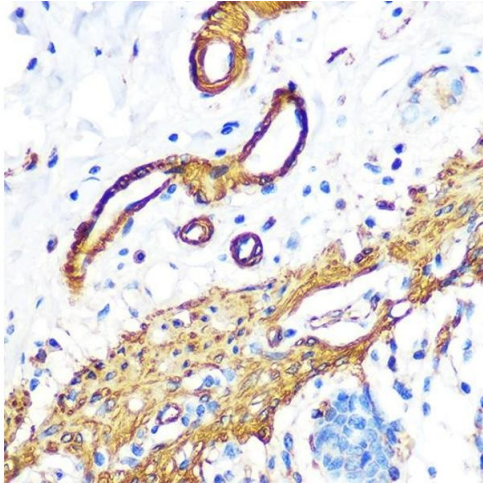
Buffer: PBS with 0.02 % sodium azide,0.05 % BSA,50 % glycerol, pH 7.3.

Preservative: Sodium azide

Precaution of Use: This product contains Sodium azide: a POISONOUS AND HAZARDOUS SUBSTANCE which should be handled by trained staff only.

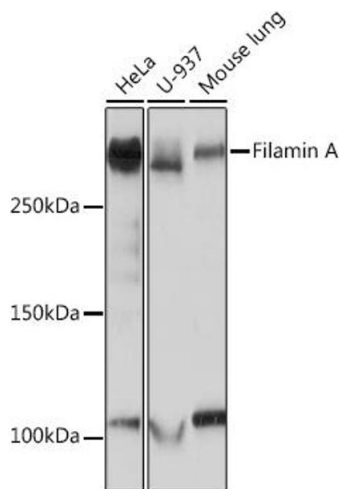
Storage: -20 °C

Storage Comment: Store at -20°C. Avoid freeze / thaw cycles.



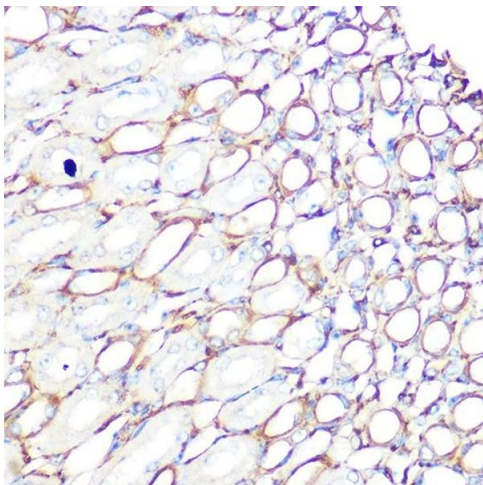
Immunohistochemistry

Image 1. Immunohistochemistry of paraffin-embedded human colon using Filamin A Rabbit mAb (ABIN1682545, ABIN3018024, ABIN3018025 and ABIN7101570) at dilution of 1:100 (40x lens). Perform microwave antigen retrieval with 10 mM PBS buffer pH 7.2 before commencing with IHC staining protocol.



Western Blotting

Image 2. Western blot analysis of extracts of various cell lines, using Filamin A Rabbit mAb (ABIN1682545, ABIN3018024, ABIN3018025 and ABIN7101570) at 1:1000 dilution. Secondary antibody: HRP Goat Anti-Rabbit IgG (H+L) (ABIN1684268 and ABIN3020597) at 1:10000 dilution. Lysates/proteins: 25 µg per lane. Blocking buffer: 3 % nonfat dry milk in TBST. Detection: ECL Basic Kit (RM00020). Exposure time: 1s.



Immunohistochemistry

Image 3. Immunohistochemistry of paraffin-embedded mouse kidney using Filamin A Rabbit mAb (ABIN1682545, ABIN3018024, ABIN3018025 and ABIN7101570) at dilution of 1:100 (40x lens). Perform microwave antigen retrieval with 10 mM PBS buffer pH 7.2 before commencing with IHC staining protocol.

Please check the [product details page](#) for more images. Overall 4 images are available for ABIN7101570.